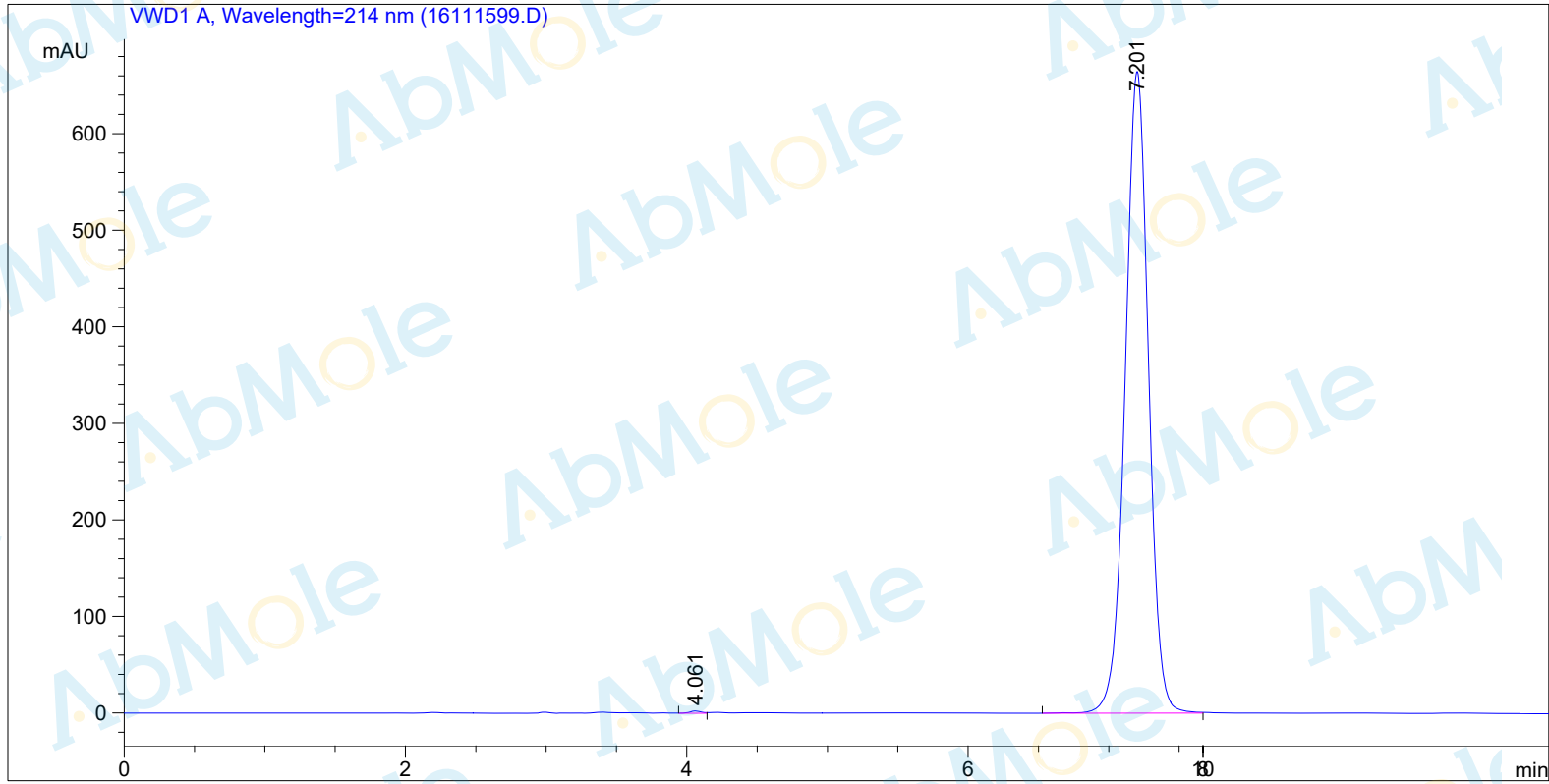


```

=====
Sample Name      : M2008-ICG-001-04          Location       : Vial 1
Acq. Operator   : LC                      Inj Volume    : 1 µl
Acq. Instrument : Instrument 1              Method        : C:\HPCHEM\1\METHODS\DEF_LC1.M
=====

```



```

=====
                          Area Percent Report
=====

```

```

Sorted By      :      Signal
Multiplier     :      1.0000
Dilution       :      1.0000
Use Multiplier & Dilution Factor with ISTDs

```

Signal 1: VWD1 A, Wavelength=214 nm

Peak #	RetTime [min]	Type	Width [min]	Area mAU	Area *s	Height [mAU]	Area %
1	4.061	VV	0.0862	13.59883		2.40899	0.1769
2	7.201	BB	0.1784	7674.21289		664.81702	99.8231

```
Totals :                7687.81172  667.22601
```

Results obtained with enhanced integrator!

```

=====
*** End of Report ***
=====

```