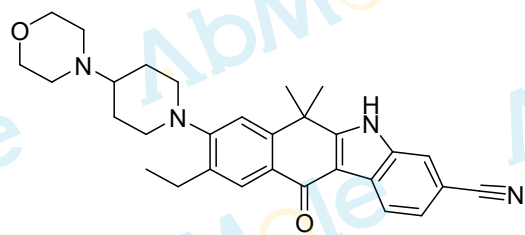


12.685

8.332  
8.312  
8.038  
7.993  
7.613  
7.610  
7.592  
7.589  
7.331

3.605  
3.595  
3.583  
3.322  
3.223  
3.193  
2.786  
2.758  
2.728  
2.708  
2.690  
2.671  
2.524  
2.513  
2.508  
2.503  
2.499  
2.321  
2.312  
2.303  
1.918  
1.910  
1.890  
1.747  
1.626  
1.604  
1.597  
1.575  
1.568  
1.291  
1.273  
1.254  
-0.001

M1942-CH5424802-04  
Chemical Formula: C<sub>30</sub>H<sub>34</sub>N<sub>4</sub>O<sub>2</sub>  
Molecular Weight: 482.63



CAS: 1256580-46-7  
DMSO-d<sub>6</sub>, 400 MHz

1.00

1.03 } 2.07  
1.02 } 1.02

4.13  
2.10  
2.12  
2.09  
4.19  
1.07  
2.15  
2.11  
6.19  
3.15

12 10 8 6 4 2 0 PPM