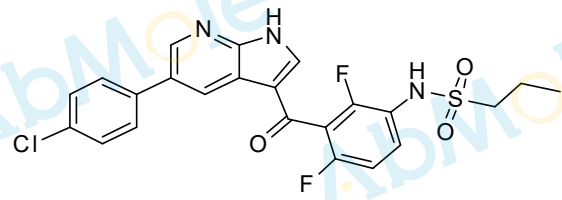


13.018

9.759  
8.721  
8.715  
8.641  
8.249  
7.809  
7.805  
7.793  
7.788  
7.623  
7.608  
7.600  
7.594  
7.588  
7.578  
7.571  
7.566  
7.310  
7.307  
7.285  
7.266  
7.263

3.318  
3.150  
3.135  
3.131  
3.125  
3.111  
2.513  
2.509  
2.504  
2.499  
2.495  
1.775  
1.756  
1.737  
1.718  
0.987  
0.968  
0.950  
-0.000

M1761-PLX4032-07  
Chemical Formula: C<sub>23</sub>H<sub>18</sub>ClF<sub>2</sub>N<sub>3</sub>O<sub>3</sub>S  
Molecular Weight: 489.92



CAS: 918504-65-1

DMSO-d<sub>6</sub>, 400 MHz

