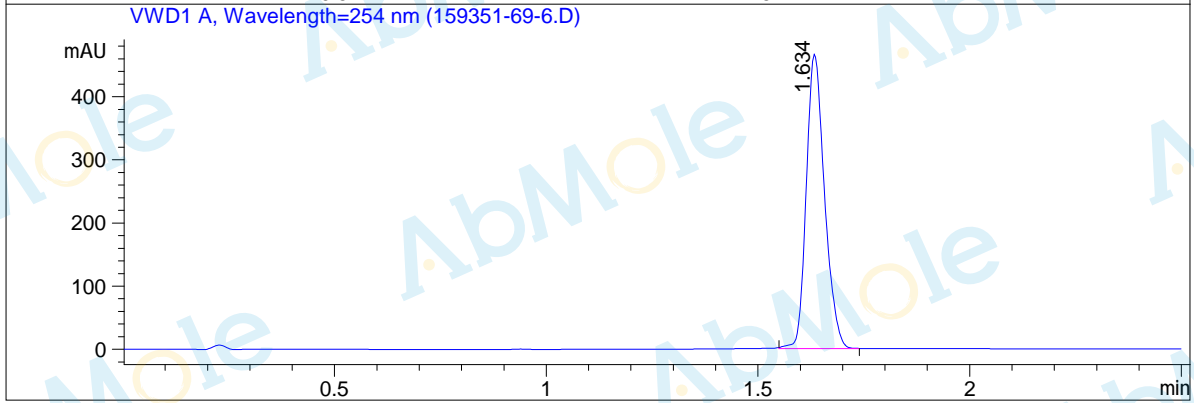
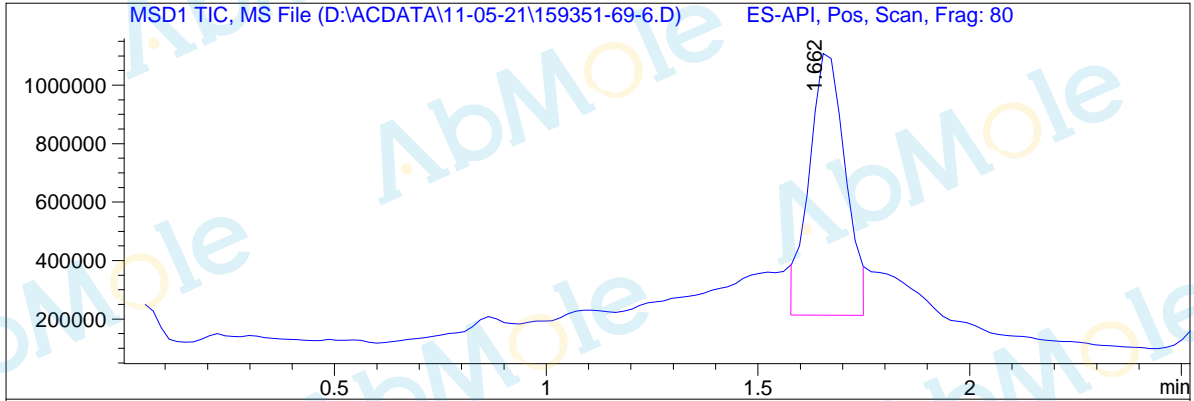


# LCMS Report

Sample Name : M1709-Everolimus-07  
Data File : D:\ACDATA\11-05-21\159351-69-6.D  
Injection Date : Fri, 5. Nov. 2021 Inj. Vol. : 3ul  
Acq Operator : LCMS-19 Location : P2-B-02  
Acq. Method : D:\METHODS\2\_5MIN05-98-P100-15  
Method Info. : Easy-Access Method: '2\_5MIN05-98-P100-1500'

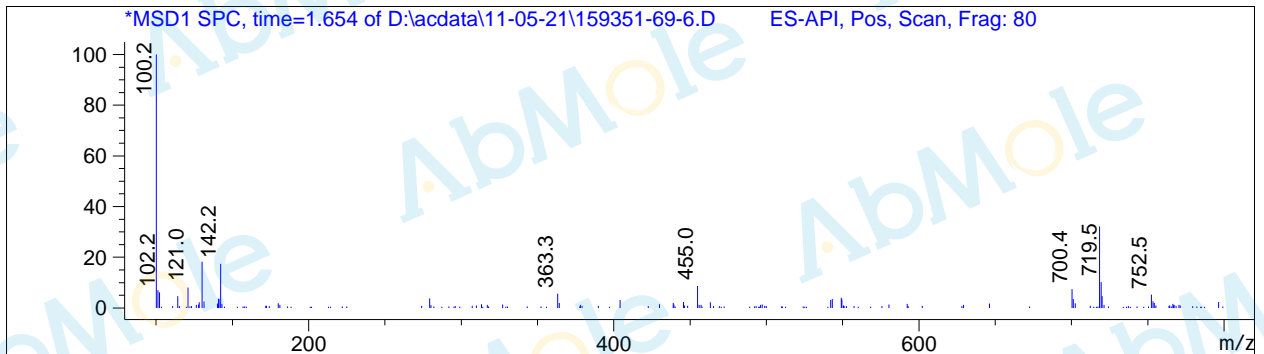


## Integration Results

Signal 1: MSD1 TIC, MS File							
#	R.T.	Type	Height	Height%	Width	Area	Area %
1	1.662	VV	1021327.81	100.00	0.14	1.04e+007	100.00

Signal 2: VWD1 A, Wavelength=254 nm							
#	R.T.	Type	Height	Height%	Width	Area	Area %
1	1.634	BB	466.71	100.00	0.08	1402.27	100.00



\*\*\* End of Report \*\*\*