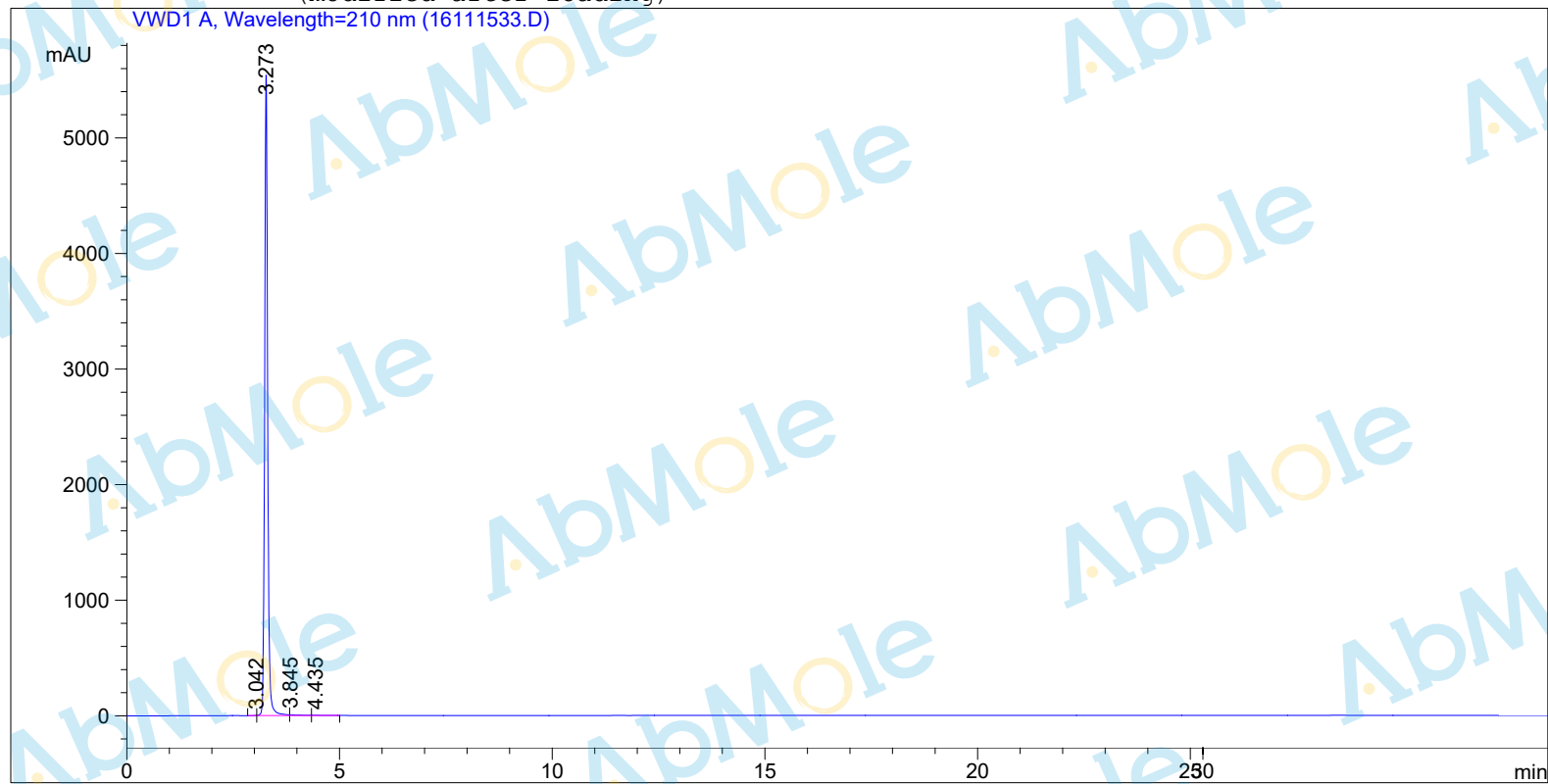


Sample Name: Bortezomib-01

```

=====
Injection Date   : 1/11/2020 3:18:54 PM
Sample Name     : Bortezomib-01
Location        : Vial 1
Acq. Operator   : LC
Acq. Instrument : Instrument 1
Method          : C:\HPCHEM\1\METHODS\DEF_LC1.M
Last changed    : 1/11/2020 3:07:25 PM by LC
                  (modified after loading)
=====
    
```



=====
 Area Percent Report
 =====

```

Sorted By       : Signal
Multiplier      : 1.0000
Dilution        : 1.0000
Use Multiplier & Dilution Factor with ISTDs
    
```

Signal 1: VWD1 A, Wavelength=210 nm

Peak #	RetTime [min]	Type	Width [min]	Area mAU	Area *s	Height [mAU]	Area %
1	3.042	VV	0.0514	6.19643		1.88986	0.0224
2	3.273	VV	0.0751	2.74360e4		5556.57373	99.2737
3	3.845	VV	0.2280	131.80098		7.35438	0.4769
4	4.435	VB	0.2380	62.72860		3.36282	0.2270

Totals : 2.76367e4 5569.18079

Results obtained with enhanced integrator!

=====
 *** End of Report ***