

8.871
8.865
8.850
8.289
8.267
8.107
8.085
8.078
8.072
7.956
7.951
7.934
7.929
7.859
7.838
7.816
7.811
7.799
7.794
7.732
7.729
7.657
7.651
7.640
7.635
7.609
7.591
7.408
7.403
7.260

3.723

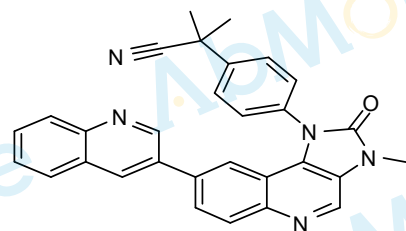
1.817

1.571

-0.000

M1671-BEZ235-08

Chemical Formula: C₃₀H₂₃N₅O
Molecular Weight: 469.55



CAS: 915019-65-7

CDCl₃, 400 MHz

2.05

2.08

2.10

2.04

1.00

1.01

1.04

1.03

1.02

3.19

6.31

10

8

6

4

2

0

PPM