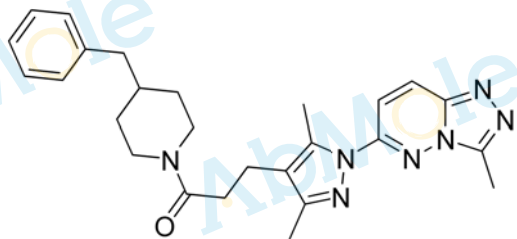


8.10
8.09
8.02
8.00
7.27
7.26
7.26
7.25
7.20
7.19
7.18
7.09
7.09
7.08
7.08
4.64
4.62
3.75
3.73
2.90
2.81
2.80
2.79
2.78
2.66
2.55
2.54
2.53
2.49
2.49
2.48
2.47
2.46
2.29
1.74
1.74
1.72
1.71
1.69
1.65
1.63
1.15
1.15
1.14
1.13
1.03
0.00



M13561-C25-140-01-CDCI3

