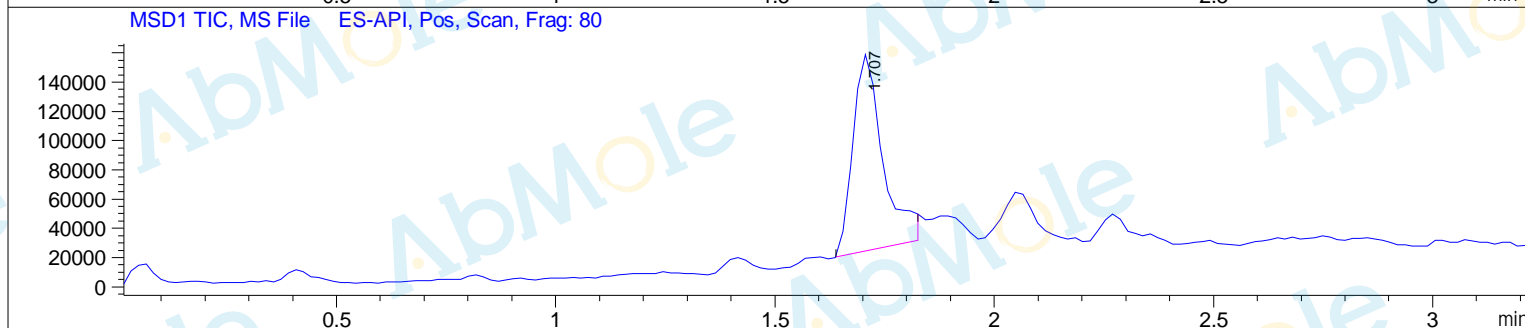
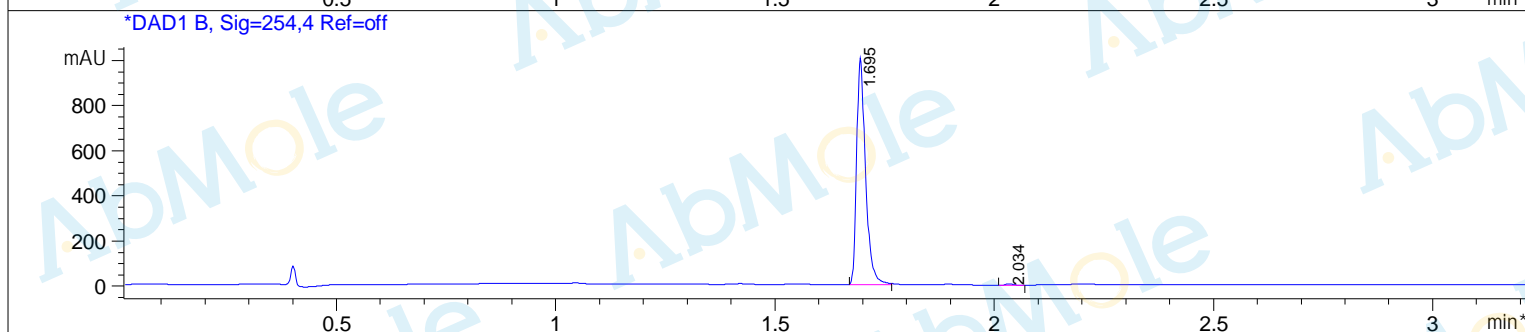
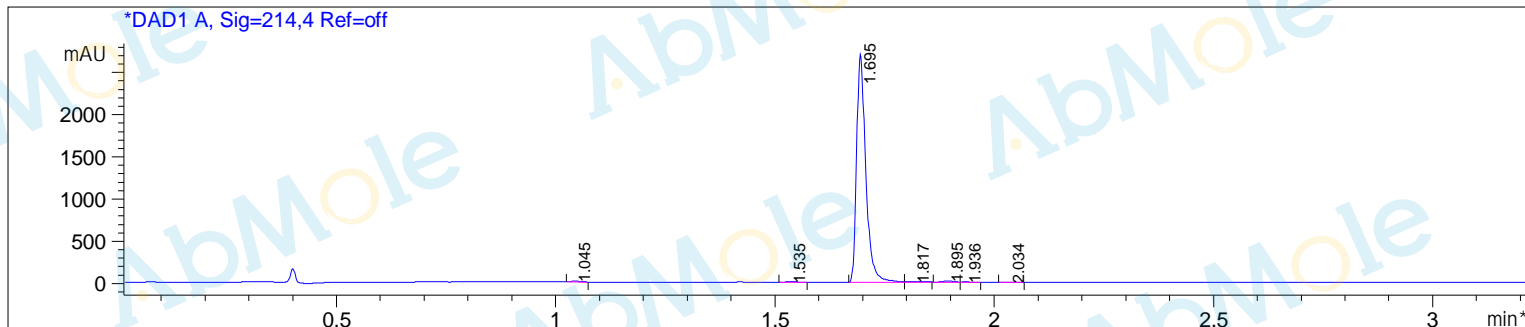


Sample Name : M10941-Tapinarof-01
Acq. Operator : C22
Spec. Reported : MS Integration
Acq. Method : D:\METHODS\1-POS-3MIN.M
Analysis Method : D:\METHODS\1-POS-3MIN.M
Sample Info : Easy-Access Method: '1-POS-3MIN.M'
Method Info : Column:Xbridge C18(2) (4.6x 50 mm, 3.5um)
 Mobile phase: H2O(10 mmol NH4HCO3) (A) / ACN(B)
 Elution program: Gradient from 5 to 95% of B in1.5min at 1.8ml/min
 Temperature: 50 °C
 Detection: UV (214 , 4 nm) and MS (ESI, Pos mode ,103 to 800 amu)



Integration Results for DAD1 A, Sig=214,4 Ref=off

RetTim	Width	Area	Height	Area%
1.05	0.02	12.02	10.75	0.29
1.53	0.03	15.99	9.11	0.39
1.70	0.02	3991.95	2699.61	97.30
1.82	0.04	25.72	9.76	0.63
1.90	0.03	35.62	17.31	0.87
1.94	0.02	12.31	8.07	0.30
2.03	0.02	9.24	6.42	0.23

Integration Results for DAD1 B, Sig=254,4 Ref=off

RetTim	Width	Area	Height	Area%
1.70	0.02	1433.91	1002.82	99.46
2.03	0.02	7.74	6.13	0.54

Ret. Time: 1.71

<<<< POSITIVE SPECTRA >>>>

*ES-API Positive

