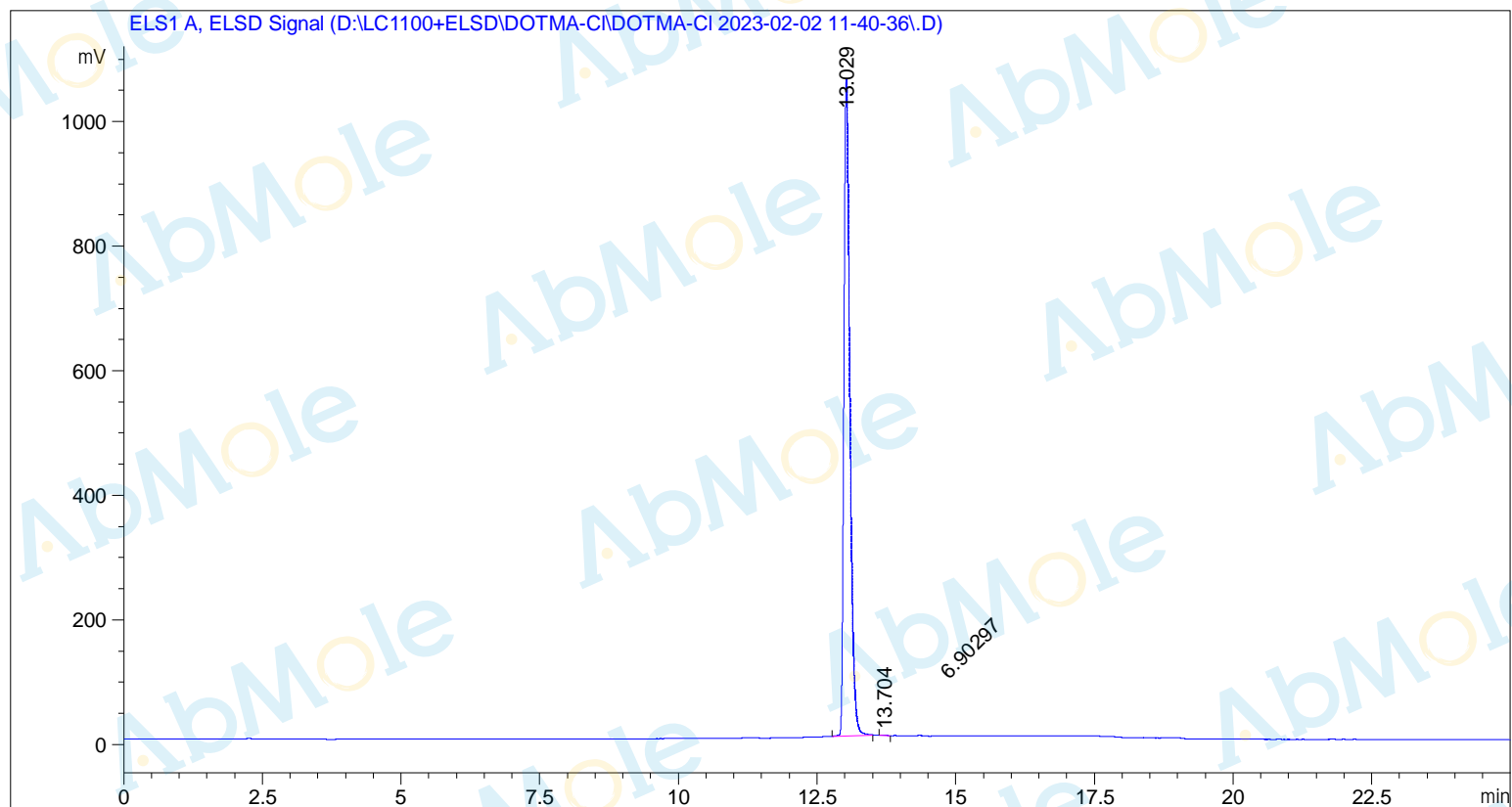


```

=====
Acq. Operator   : System                Seq. Line   :    1
Acq.           : LC1100+ELSD           Location    :   31
Injectio       : 2023/2/02 11:41:49    Inj         :    1
                                           Inj Volume  : 5.000 µl
Different Inj Volume from Sequence ! Actual Inj Volume : 4.000 µl
Acq. Method    : D:\LC1100+ELSD\DOTMA-CI\DOTMA-CI 2023-02-02 11-40-36\DOTMA-CI.M
Last changed   : 2023/2/02 11:40:36 : System
Analysis       : DOTMA
=====
  
```



=====
 Area Percent Report
 =====

```

Sorted By      : Signal
Multiplier     : 1.0000
Dilution       : 1.0000
Use Multiplier & Dilution Factor with ISTDs
  
```

Signal 1: ELS1 A, ELSD Signal

Peak #	RetTime [min]	Type	Width [min]	Area [mV*s]	Height [mV]	Area %
1	13.029	BV R	0.1109	7943.85205	1054.13965	99.9132
2	13.704	MM	0.1044	6.90297	1.10195	0.0868

Totals : 7950.75502 1055.24159

*** End of Report ***