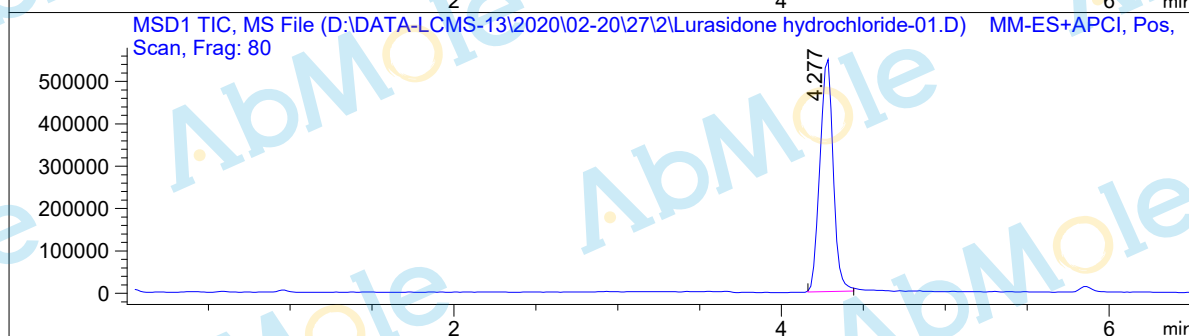
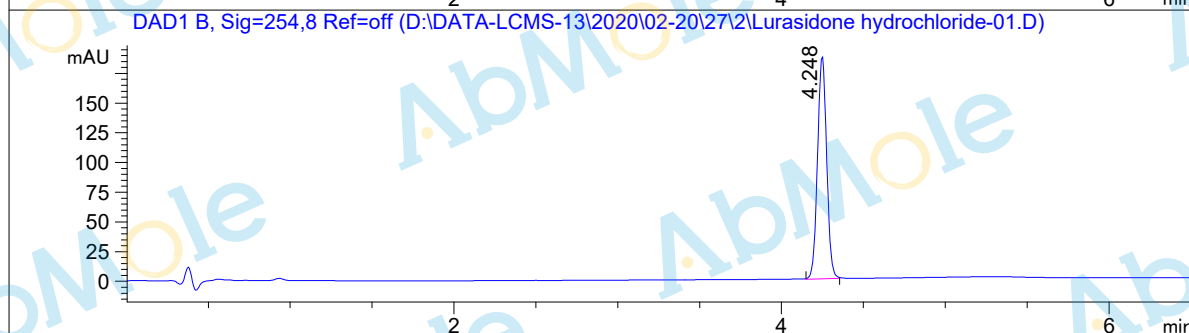
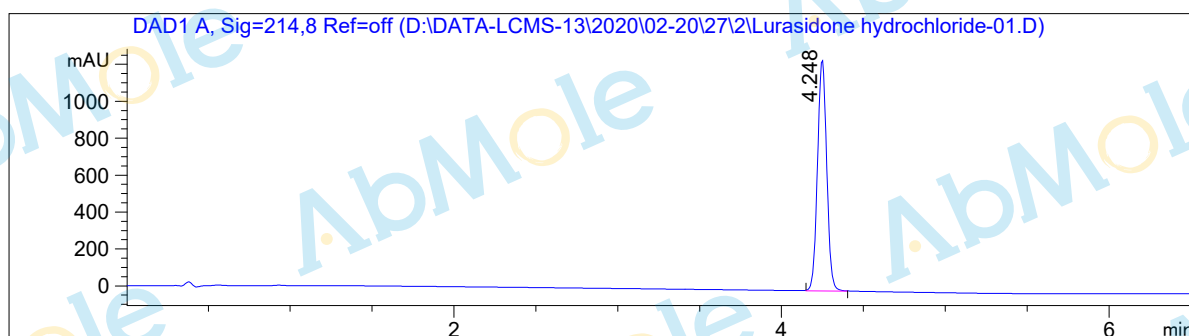


LCMS Report

Sample Name : Lurasidone hydrochloride-01
Data File : D:\DATA-LCMS-13\2020\02-20\27\2\Lurasidone hydrochloride-01.D
Injection Date : Thu, 27. Feb. 2020 Inj. Vol. : 3ul
Acq Operator : LCMS-13 Location : Vial 22
Acq. Method : D:\data-lcms-13\2020\02-20\27\2\P-40-95.M
Method Info. : column:Eclipse XDB-C18 5um 4.6*150mm ;mobile phase:B(ACN) A(0.02%NH4AC); gradient(B%)!as Acq.Method above



Integration Results

Signal 1: DAD1 A, Sig=214,8 Ref=off

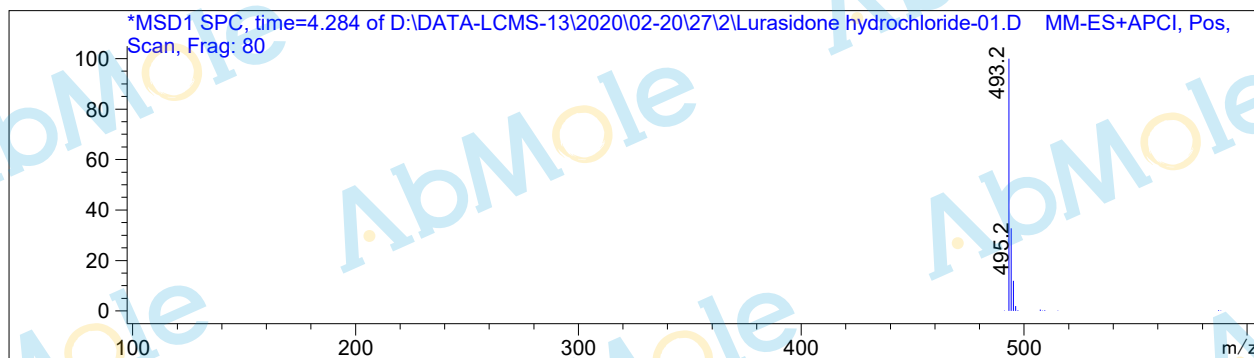
#	R.T.	Type	Height	Height%	Width	Area	Area %
1	4.248	BB	1252.639	100.000	0.061	4884.709	100.000

Signal 2: DAD1 B, Sig=254,8 Ref=off

#	R.T.	Type	Height	Height%	Width	Area	Area %
1	4.248	MM	187.981	100.000	0.064	725.001	100.000

Signal 3: MSD1 TIC, MS File

#	R.T.	Type	Height	Height%	Width	Area	Area %
1	4.277	BB	556175.875	100.000	0.086	3.088e+006	100.000



*** End of Report ***