

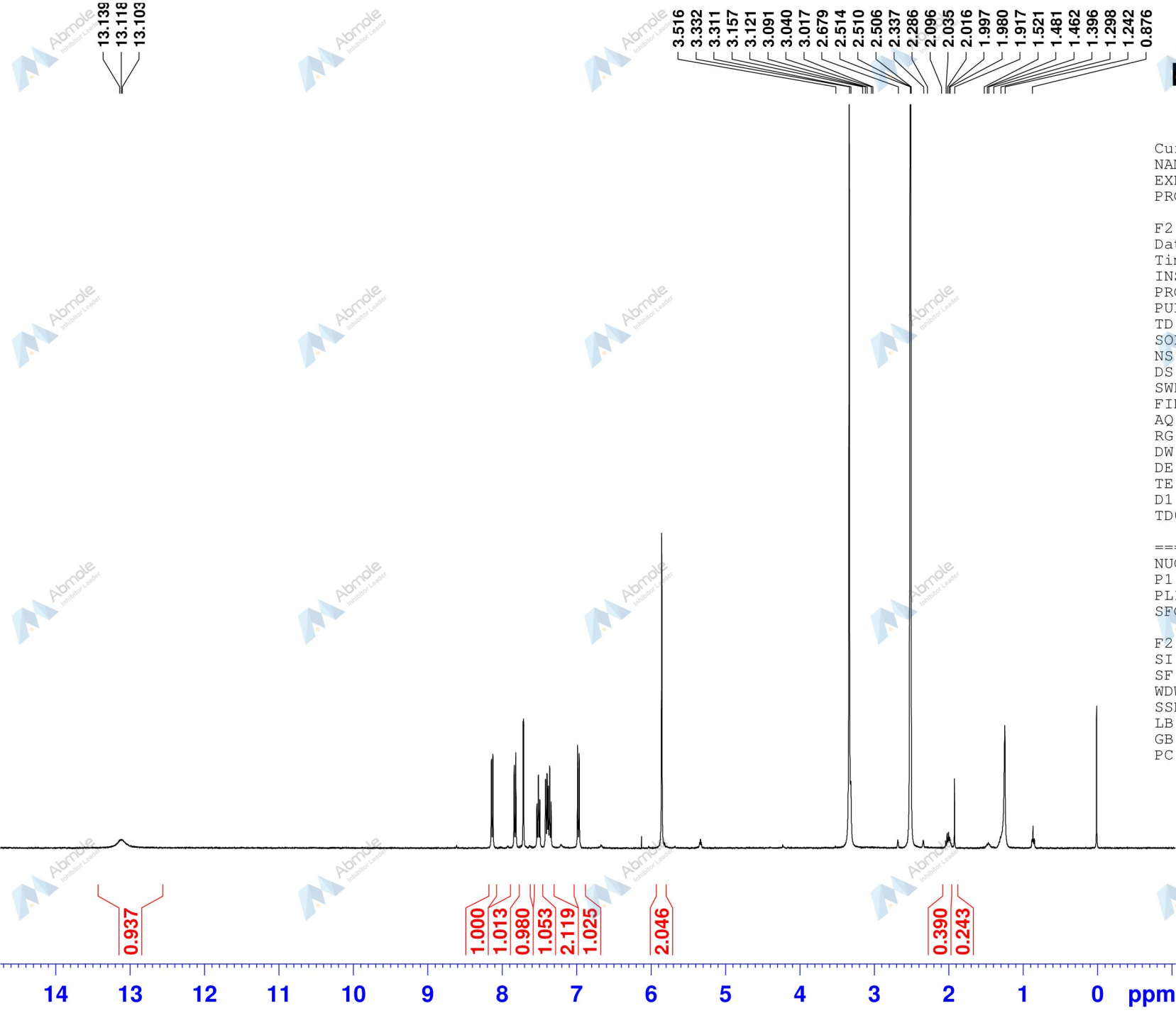


Current Data Parameters
NAME Lonidamine
EXPNO 1
PROCNO 1

F2 - Acquisition Parameters
Date_ 20140531
Time 8.21
INSTRUM spect
PROBHD 5 mm PABBO BB-
PULPROG zg30
TD 65536
SOLVENT DMSO
NS 16
DS 2
SWH 8278.146 Hz
FIDRES 0.126314 Hz
AQ 3.9584243 sec
RG 512
DW 60.400 usec
DE 8.00 usec
TE 297.1 K
D1 1.00000000 sec
TD0 1

==== CHANNEL f1 =====
NUC1 1H
P1 10.70 usec
PL1 -3.00 dB
SFO1 400.1324710 MHz

F2 - Processing parameters
SI 32768
SF 400.130000 MHz
WDW EM
SSB 0
LB 0.30 Hz
GB 0
PC 1.00



13.139
13.118
13.103

3.516
3.332
3.311
3.157
3.121
3.091
3.040
3.017
3.017
2.679
2.514
2.510
2.506
2.337
2.286
2.096
2.035
2.016
1.997
1.980
1.917
1.521
1.481
1.462
1.396
1.298
1.242
0.876

0.937

1.000

1.013

0.980

1.053

2.119

1.025

2.046

0.390

0.243

14 13 12 11 10 9 8 7 6 5 4 3 2 1 0 ppm