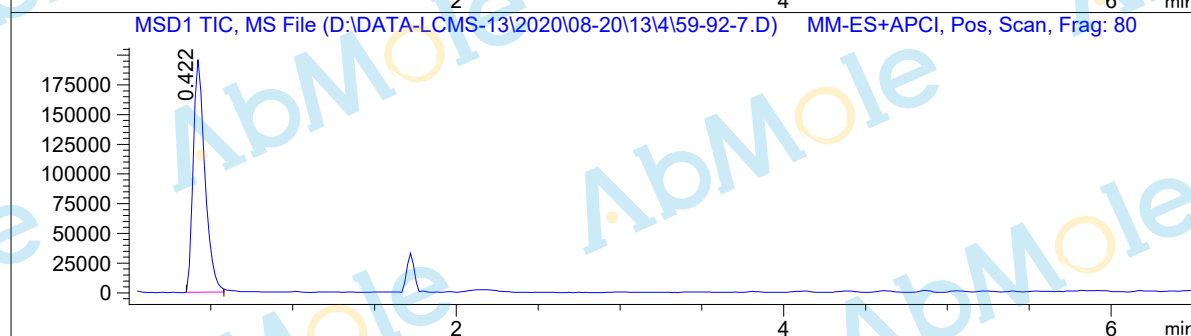
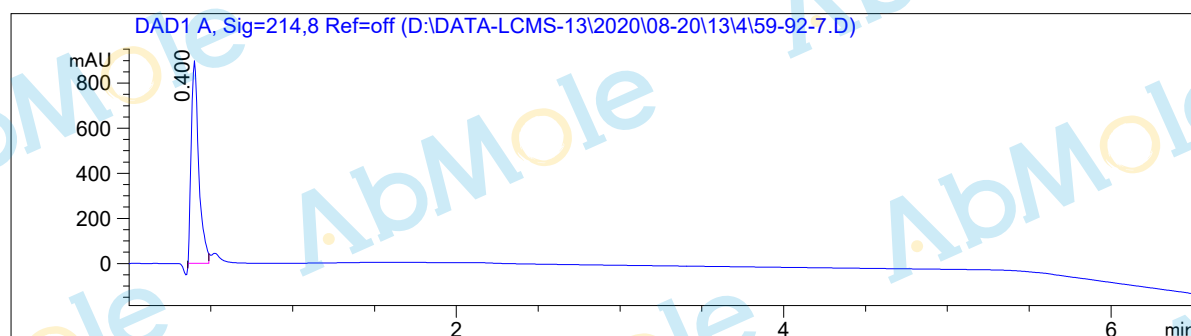


# LCMS Report

Sample Name : Levodopa-01  
Data File : D:\DATA-LCMS-13\2020\08-20\13\4\59-92-7.D  
Injection Date : Thu, 13. Aug. 2020 Inj. Vol. : 2ul  
Acq Operator : LCMS-13 Location : Vial 52  
Acq. Method : D:\data-lcms-13\2020\08-20\13\4\P-02-20.M  
Method Info. : column:Xbridge C18 5um 4.6\*50mm ;mobile phase:B (ACN)  
A(0.02%NH4Ac); gradient(B%)!as Acq.Method above



## Integration Results

Signal 1: DAD1 A, Sig=214,8 Ref=off

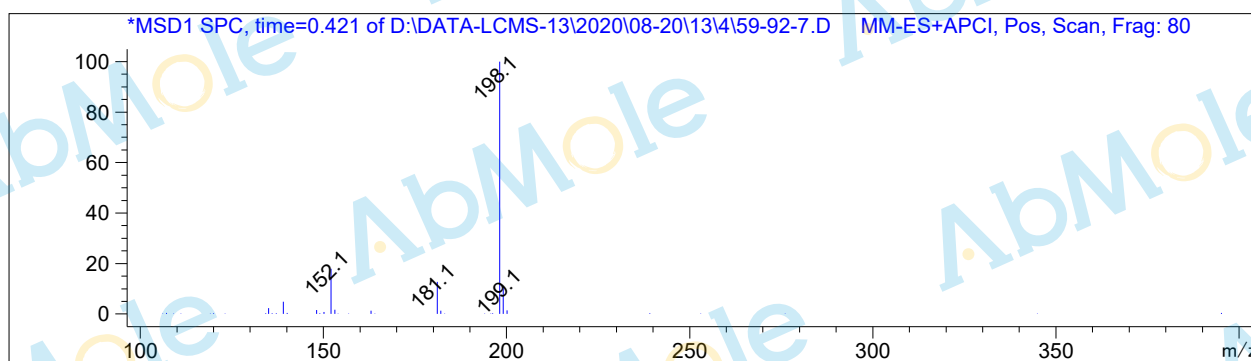
#	R.T.	Type	Height	Height%	Width	Area	Area %
1	0.400	MF	903.163	100.000	0.053	2877.894	100.000

Signal 2: DAD1 B, Sig=254,8 Ref=off

#	R.T.	Type	Height	Height%	Width	Area	Area %
1	0.400	MM	43.196	100.000	0.060	156.789	100.000

Signal 3: MSD1 TIC, MS File

#	R.T.	Type	Height	Height%	Width	Area	Area %
1	0.422	BB	195834.313	100.000	0.073	968014.063	100.000



\*\*\* End of Report \*\*\*