

File D:\DATA\PRO2769-LCMS

Injection Date : 31 Oct 14 5:23 pm +0800

Sample Name : Laquinimod-LCMS

Acq. Operator : LCMS

Spec. Reported : MS Integration

Acq. Method : D:\METHODS\1-POS-3MIN.M

Analysis Method : D:\METHODS\1-POS-3MIN.M

Sample Info : Easy-Access Method: '1-POS-3min'

Method Info : Mobile Phase: A: water (10mM Ammonium hydrogen carbonate) B: ACN

Gradient: 5%-95% B in 1.5min

Flow Rate: 2.0ml/min

Column: XBridge C18, 4.6*50mm, 3.5um

Oven Temperature: 40 C

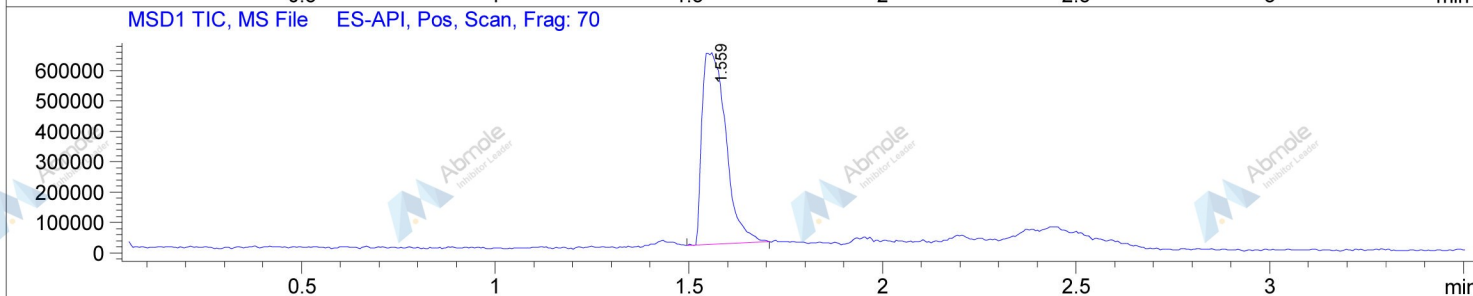
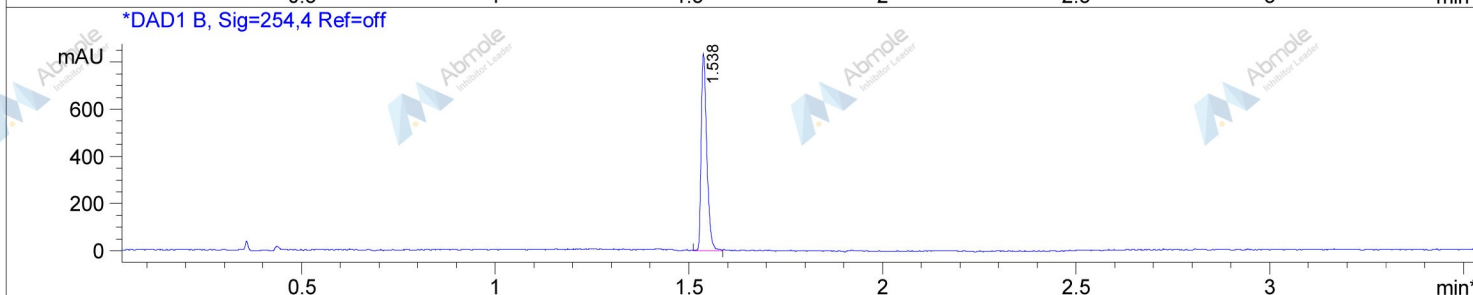
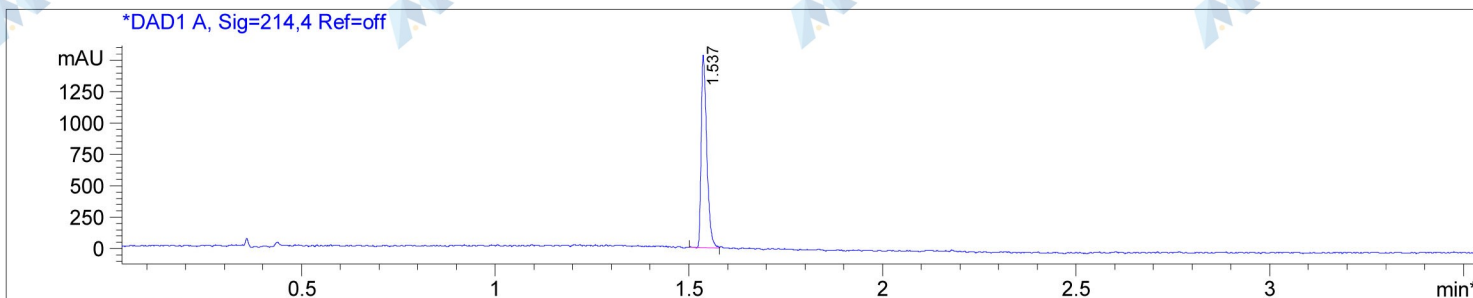
MASS Range:110-800

Tgt Mass (EZ) :

Location : P1-A-05

Inj : 1

Inj Volume : 2 ul



Integration Results for DAD1 A, Sig=214,4 Ref=off

RetTim	Width	Area	Height	Area%
1.54	0.01	1530.21	1534.30	100.00

Integration Results for DAD1 B, Sig=254,4 Ref=off

RetTim	Width	Area	Height	Area%
1.54	0.02	834.93	836.19	100.00

Ret. Time: 1.56 <<<< POSITIVE SPECTRA >>>>

