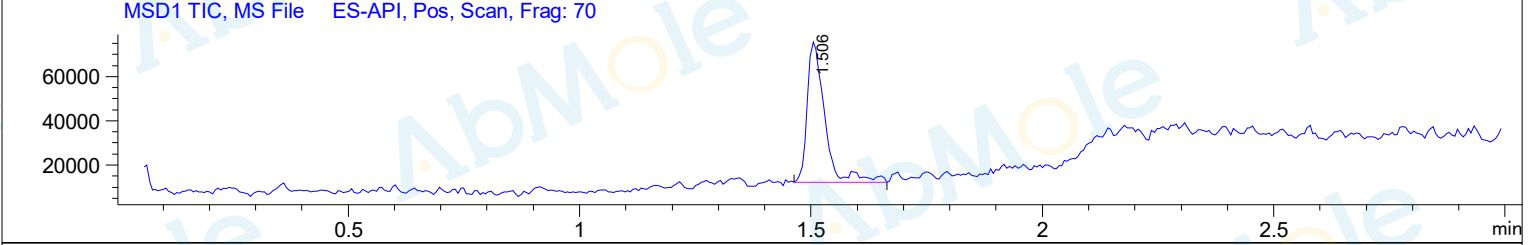
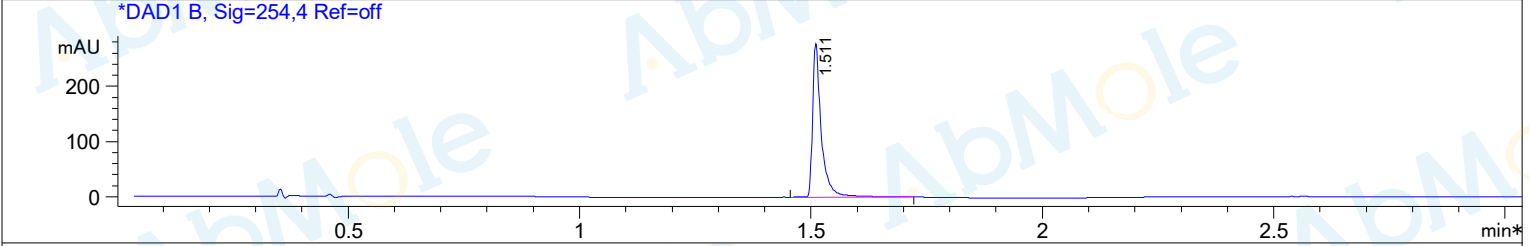
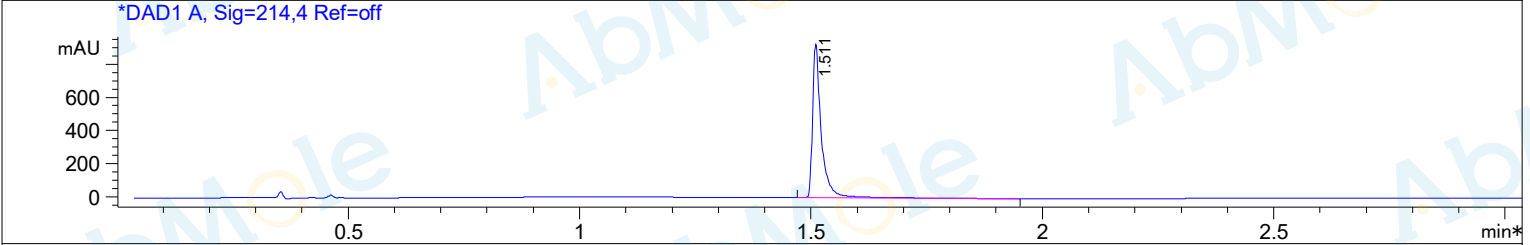
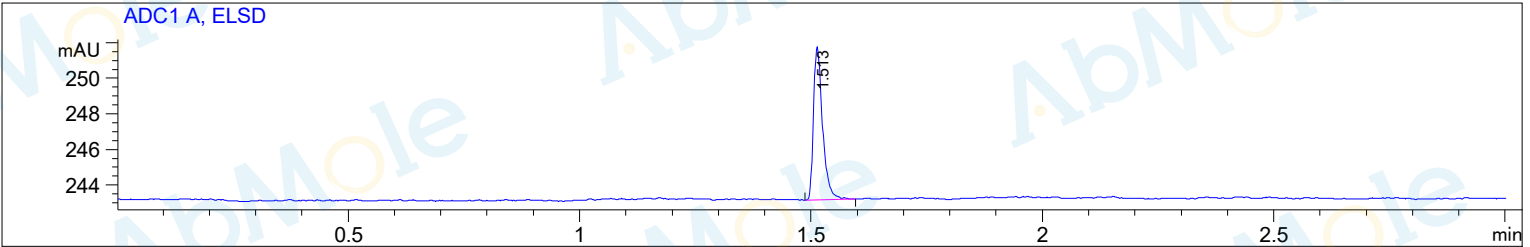


Injection Date : 27 May 21  
 Sample Name : LM10-01  
 Method Info : Mobile Phase: A: water(0.01%TFA) B: ACN(0.01%TFA)  
 Gradient: 5% increase to 95%B within 1.3 min, 95%B for 1.7 min.  
 Flow Rate: 2.0ml/min  
 Column:Sunfire C18,4.6\*50mm,3.5um  
 Column Temperature: 45 C  
 Detection:UV(214,4nm) and MS(ESI,Pos mode,110 to 1000 amu)



Integration Results for ADC1 A, ELSD

RetTim	Width	Area	Height	Area%
1.51	0.02	11.82	8.60	100.00

Integration Results for DAD1 A, Sig=214,4 Ref=off

RetTim	Width	Area	Height	Area%
1.51	0.02	1249.92	927.34	100.00

Integration Results for DAD1 B, Sig=254,4 Ref=off

RetTim	Width	Area	Height	Area%
1.51	0.02	365.35	278.89	100.00

Ret. Time: 1.51

&lt;&lt;&lt;&lt; POSITIVE SPECTRA &gt;&gt;&gt;&gt;

