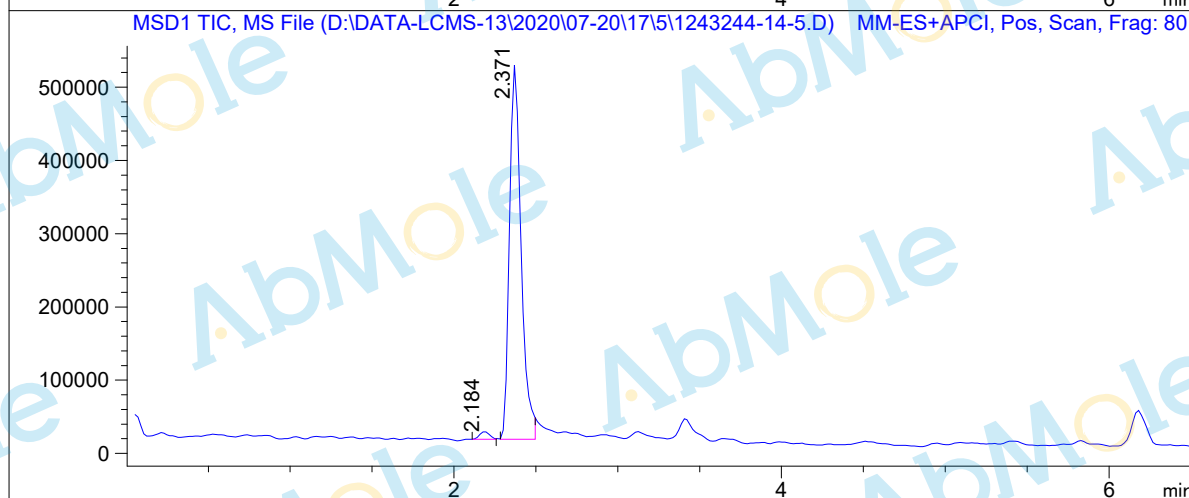
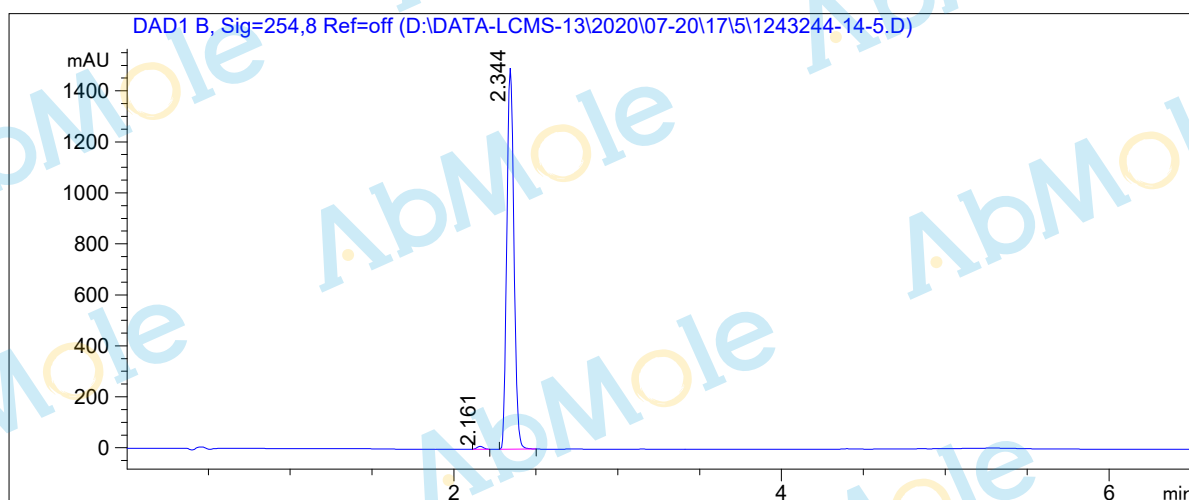


LCMS Report

Sample Name : LGK-974-03
Data File : D:\DATA-LCMS-13\2020\07-20\17\5\1243244-14-5.D
Injection Date : Sun, 19. Jul. 2020 Inj. Vol. : 2ul
Acq Operator : LCMS-13 Location : Vial 41
Acq. Method : D:\data-lcms-13\2020\07-20\17\5\P-05-95-TFA.M
Method Info. : column:Xbridge C18 5um 4.6*50mm ;mobile phase:B (ACN)
A(0.05%TFA) ; gradient(B%)!as Acq.Method above



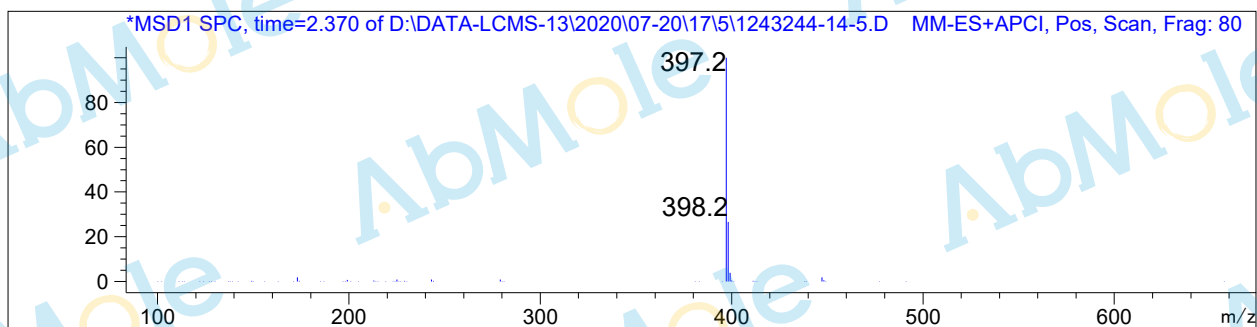
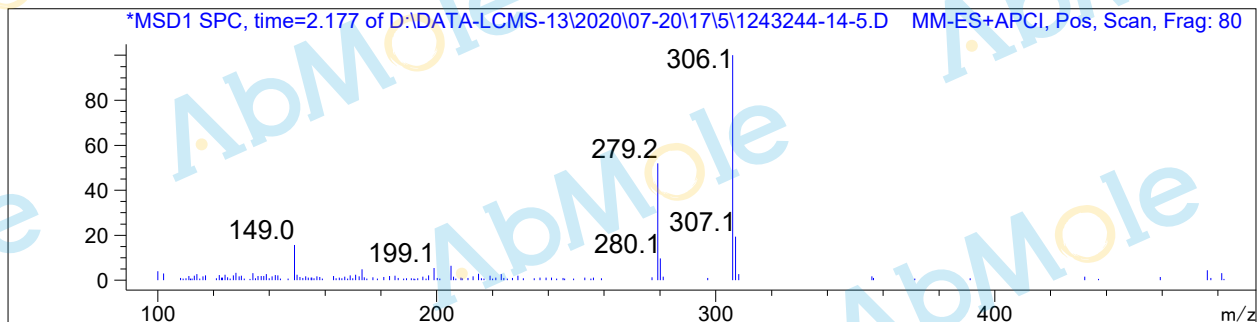
Integration Results

Signal 1: DAD1 B, Sig=254,8 Ref=off

#	R.T.	Type	Height	Height%	Width	Area	Area %
1	2.161	FM	11.582	0.765	0.047	32.323	0.707
2	2.344	MM	1501.669	99.235	0.050	4542.333	99.293

Signal 2: MSD1 TIC, MS File

#	R.T.	Type	Height	Height%	Width	Area	Area %
1	2.184	MF	10772.828	2.039	0.069	44585.375	1.717
2	2.371	MF	517605.719	97.961	0.082	2.552e+006	98.283



*** End of Report ***