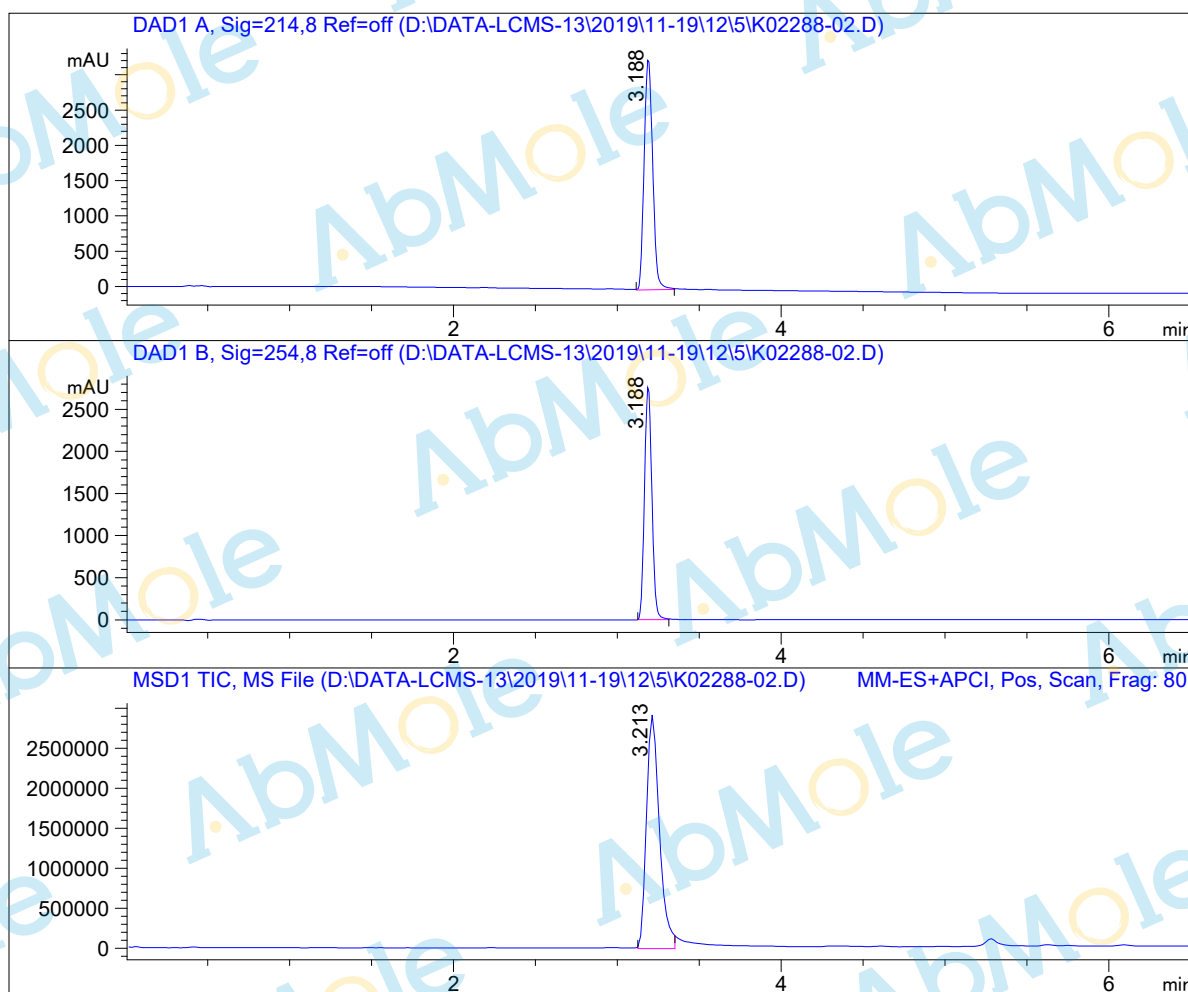


LC-MS Report

Sample Name : K02288-02
Data File : D:\DATA-LCMS-13\2019\11-19\12\5\K02288-02.D
Injection Date : Tue, 12. Nov. 2019 Inj. Vol. : 5ul
Acq Operator : LCMS-13 Location : Vial 71
Acq. Method : D:\data-lcms-13\2019\11-19\12\5\P-05-95.M
Method Info. : column:C18;column size:4.6*50mm ;mobile phase:B (ACN)
A(0.02%NH4Ac); gradient(B%)!as Acq.Method above



Integration Results

Signal 1: DAD1 A, Sig=214,8 Ref=off

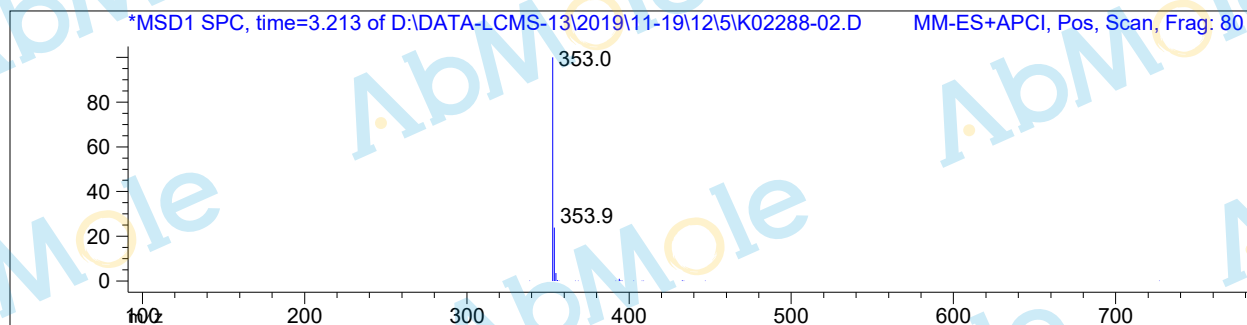
| # | R.T. | Type | Height | Height% | Width | Area | Area % |
|---|-------|------|----------|---------|-------|-----------|---------|
| 1 | 3.188 | MM | 3286.514 | 100.000 | 0.060 | 11902.774 | 100.000 |

Signal 2: DAD1 B, Sig=254,8 Ref=off

| # | R.T. | Type | Height | Height% | Width | Area | Area % |
|---|-------|------|----------|---------|-------|----------|---------|
| 1 | 3.188 | MM | 2779.474 | 100.000 | 0.052 | 8697.364 | 100.000 |

Signal 3: MSD1 TIC, MS File

| # | R.T. | Type | Height | Height% | Width | Area | Area % |
|---|-------|------|------------|---------|-------|------------|---------|
| 1 | 3.213 | MM | 2.950e+006 | 100.000 | 0.091 | 1.613e+007 | 100.000 |



*** End of Report ***