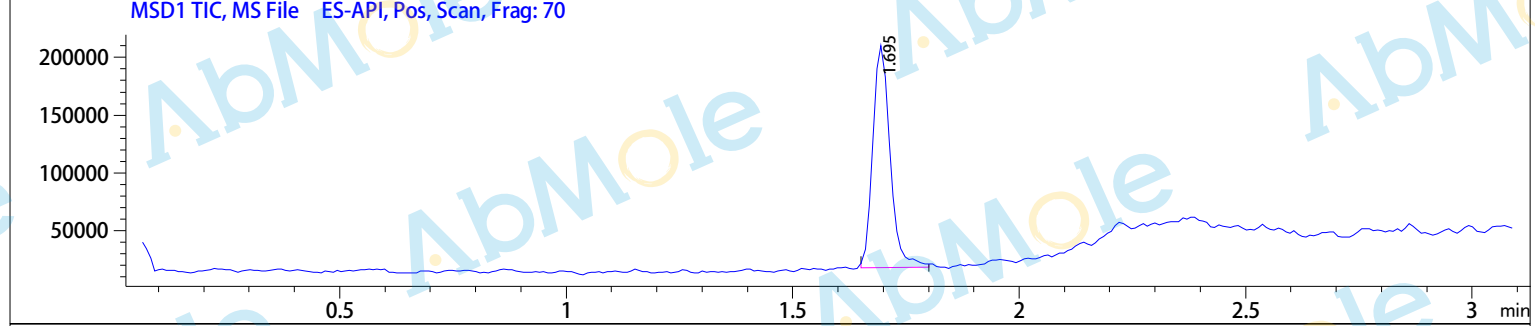
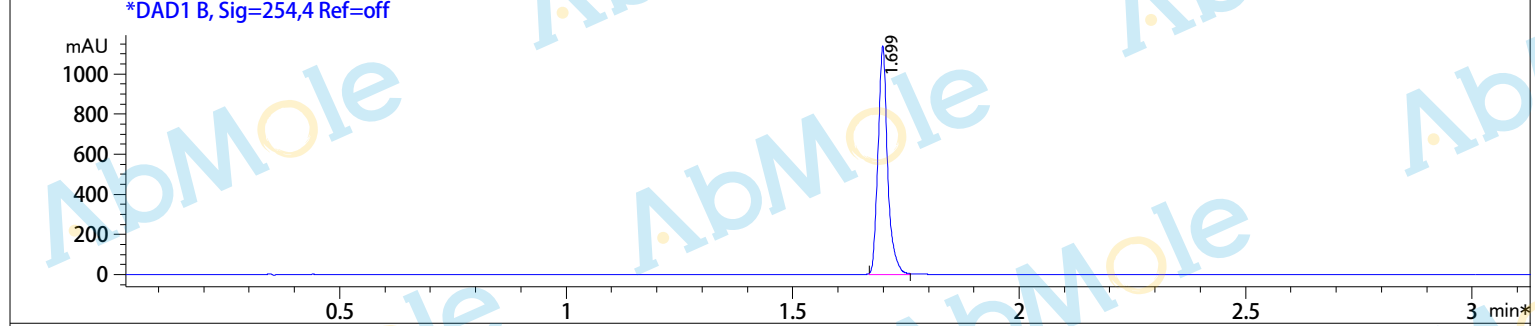
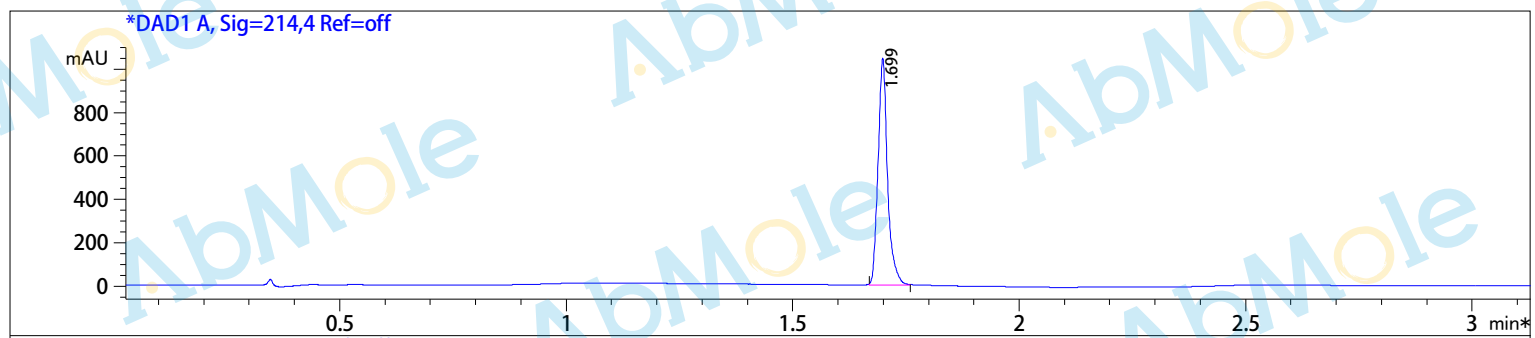


Injection Date : 5 Jan 21
 Sample Name : Isopsoralen-01
 Method Info : Column:SunFire C18 (4.6x 50 mm,3.5 um)
 Mobile phase: H2O(0.01%TFA) (A) / ACN(0.01%TFA)(B)
 Elution program: Gradient from 10 to95% of B in 1.4 min at 2ml/min
 Temperature: 50 °C
 Detection: UV (214 , 4 nm) and MS (ESI, Pos mode ,110 to 1000 amu)



Integration Results for DAD1 A, Sig=214,4 Ref=off

RetTim	Width	Area	Height	Area%
1.70	0.02	1531.05	1042.57	100.00

Integration Results for DAD1 B, Sig=254,4 Ref=off

RetTim	Width	Area	Height	Area%
1.70	0.02	1681.56	1136.39	100.00

Ret. Time: 1.69

<<<< POSITIVE SPECTRA >>>>

