

9.577
8.938
8.920
8.490
8.377
8.021
7.911
7.874
7.855
7.678
7.656
7.480
7.202
7.181
7.038
7.032
7.020
7.013
6.798
6.792

4.076

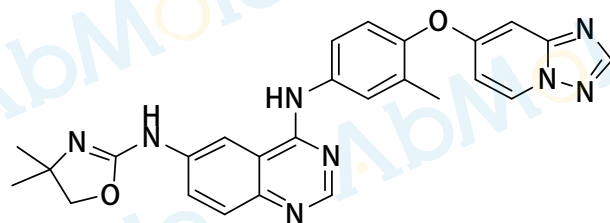
3.321

2.507
2.502
2.497
2.188

1.285
1.234

-0.000

Chemical Formula: C₂₆H₂₄N₈O₂
Molecular Weight: 480.53



CAS: 937263-43-9

DMSO-d₆, 400 MHz

1.00

1.03

0.97

0.95

1.07

1.12

1.03

1.05

1.09

1.04

1.06

1.02

2.05

3.12

6.27

10

8

6

4

2

0 PPM