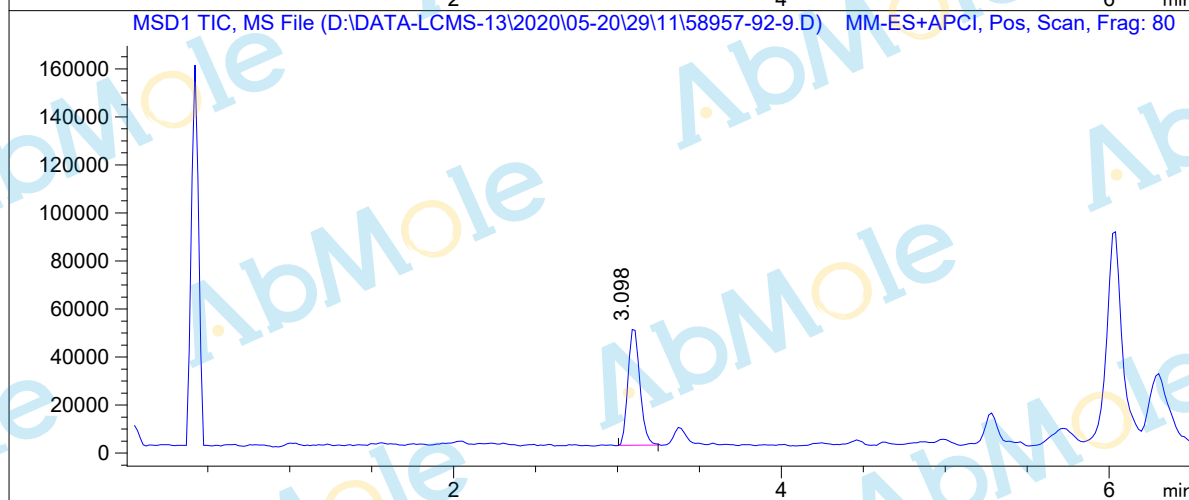
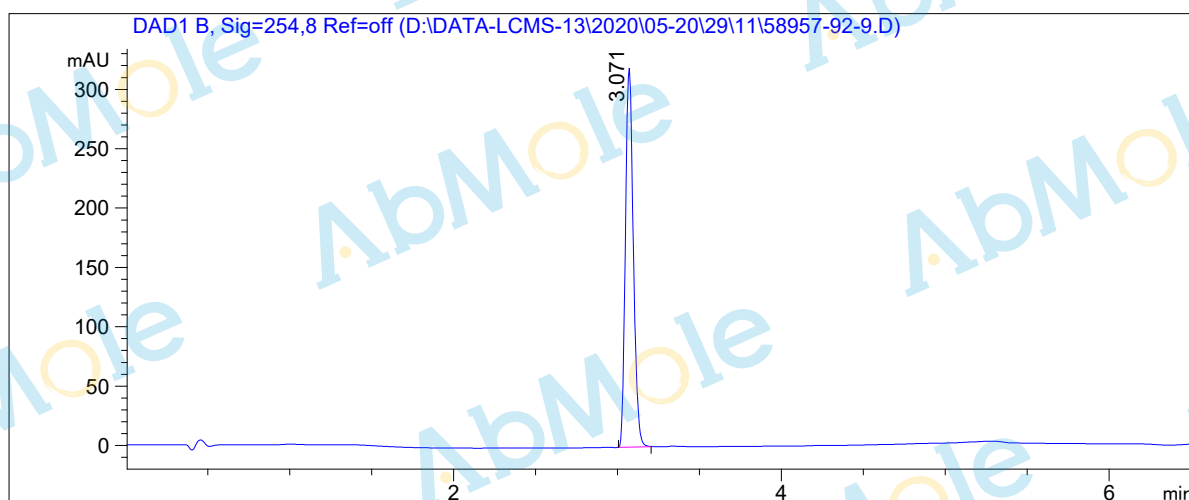


# LCMS Report

Sample Name : Idarubicin-02  
Data File : D:\DATA-LCMS-13\2020\05-20\29\11\58957-92-9.D  
Injection Date : Mon, 1. Jun. 2020 Inj. Vol. : 2ul  
Acq Operator : LCMS-13 Location : Vial 41  
Acq. Method : D:\data-lcms-13\2020\05-20\29\11\P-05-95-TFA.M  
Method Info. : column:Xbridge C18 5um 4.6\*50mm ;mobile phase:B (ACN)  
A(0.05%TFA) ; gradient(B%)!as Acq.Method above



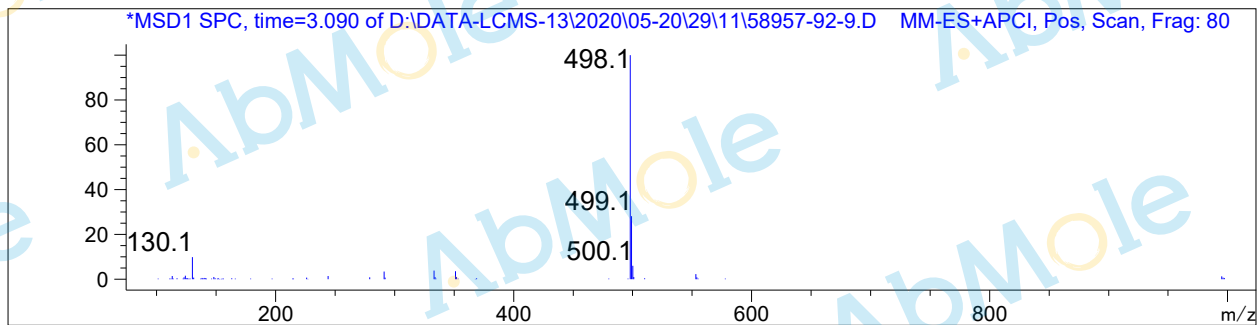
## Integration Results

Signal 1: DAD1 B, Sig=254,8 Ref=off

#	R.T.	Type	Height	Height%	Width	Area	Area %
1	3.071	BB	320.214	100.000	0.051	1074.339	100.000

Signal 2: MSD1 TIC, MS File

#	R.T.	Type	Height	Height%	Width	Area	Area %
1	3.098	BB	49544.098	100.000	0.079	245656.531	100.000



\*\*\* End of Report \*\*\*