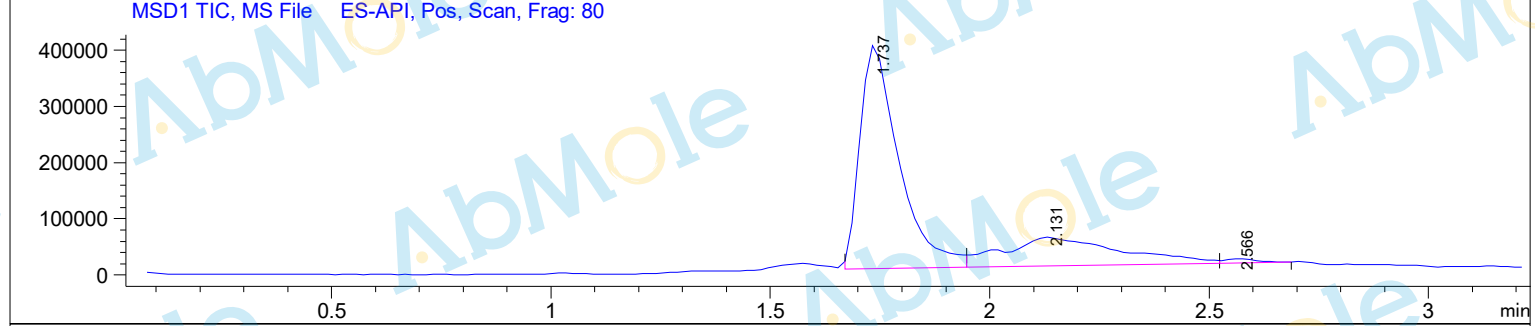
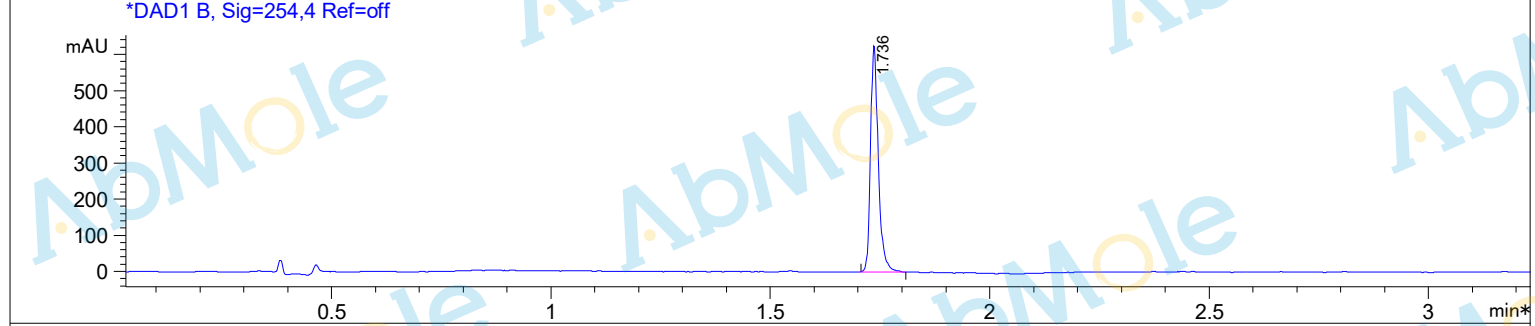
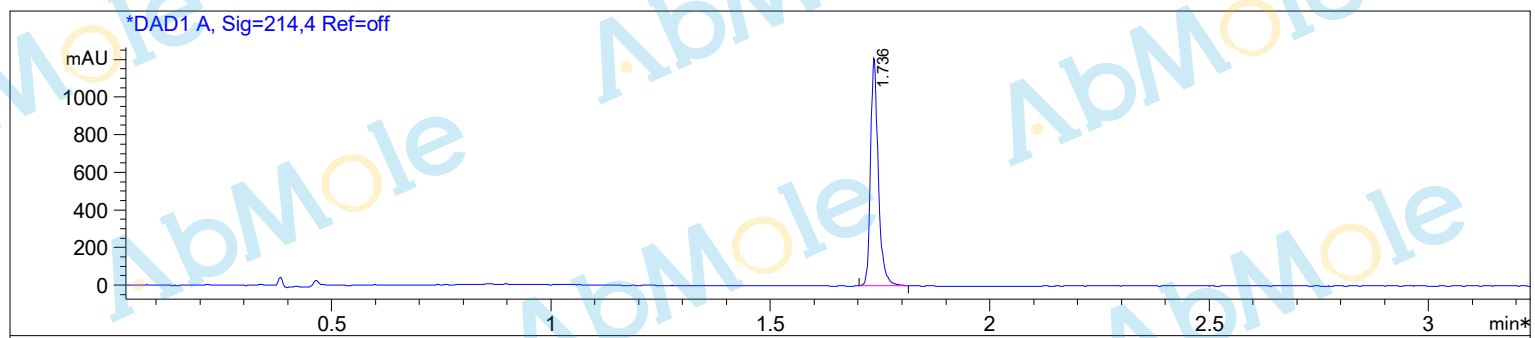


Injection Date : 12 Nov 20
Sample Name : IWR-1-endo-03
Method Info : Column:Xbridge C18(2) (4.6x 50 mm, 3.5um)
 Mobile phase: H2O(10 mmol NH4HCO3) (A) / ACN(B)
 Elution program: Gradient from 10 to 95% of B in 1.5min at 1.8ml/min
 Temperature: 50 °C
 Detection: UV (214 , 4 nm) and MS (ESI, Pos mode ,103 to 800 amu)



Integration Results for DAD1 A, Sig=214,4 Ref=off

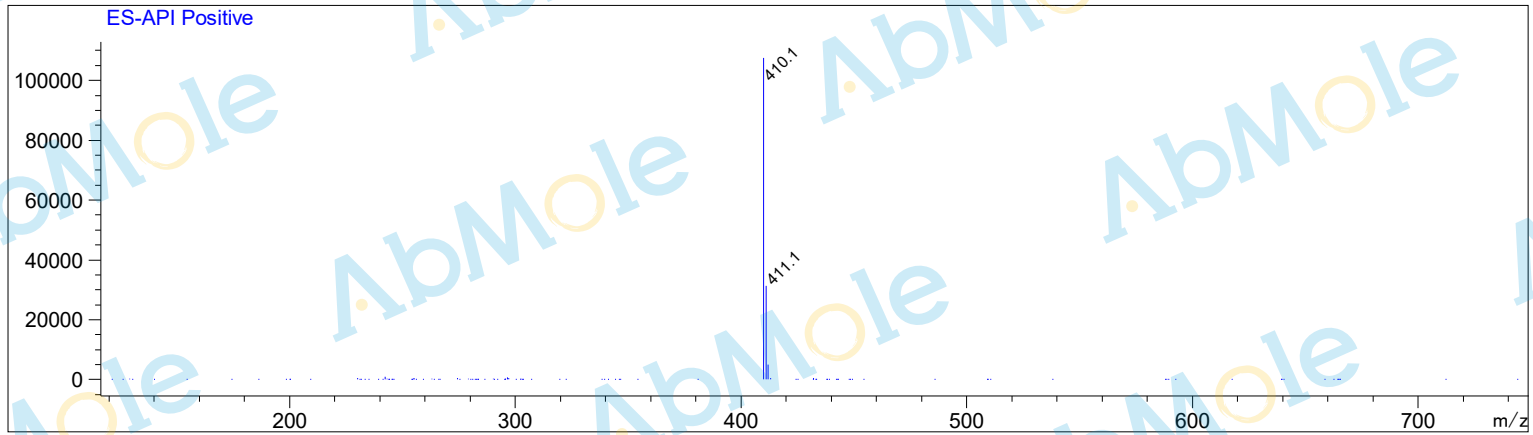
| RetTim | Width | Area | Height | Area% |
|--------|-------|---------|---------|--------|
| 1.74 | 0.02 | 1500.47 | 1213.26 | 100.00 |

Integration Results for DAD1 B, Sig=254,4 Ref=off

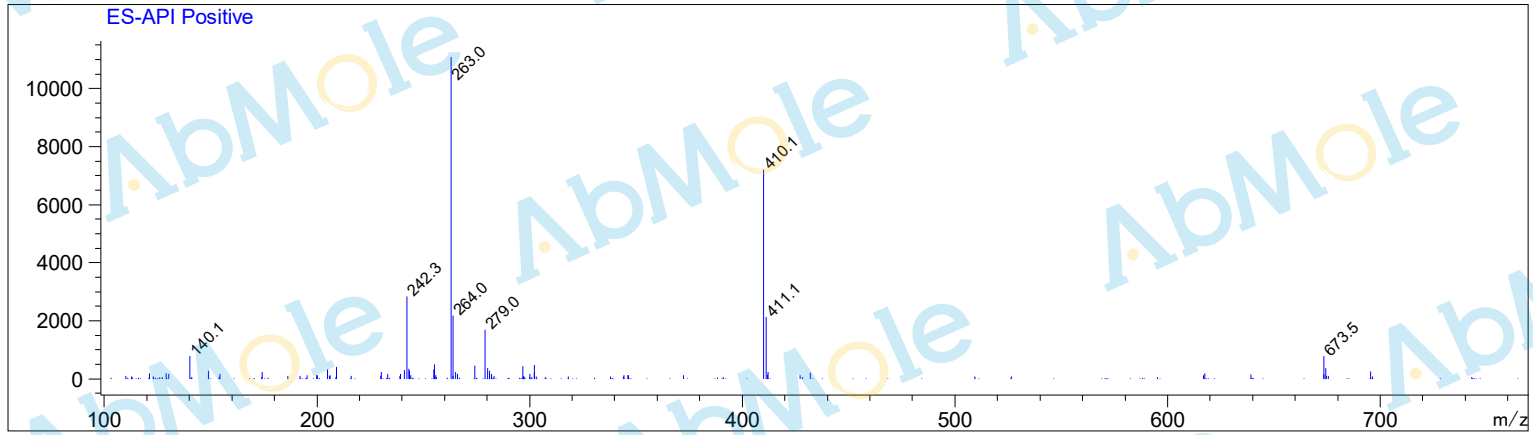
| RetTim | Width | Area | Height | Area% |
|--------|-------|--------|--------|--------|
| 1.74 | 0.02 | 776.01 | 626.53 | 100.00 |

Ret. Time: 1.74

<<<< POSITIVE SPECTRA >>>>



Ret. Time: 2.13



Ret. Time: 2.57

