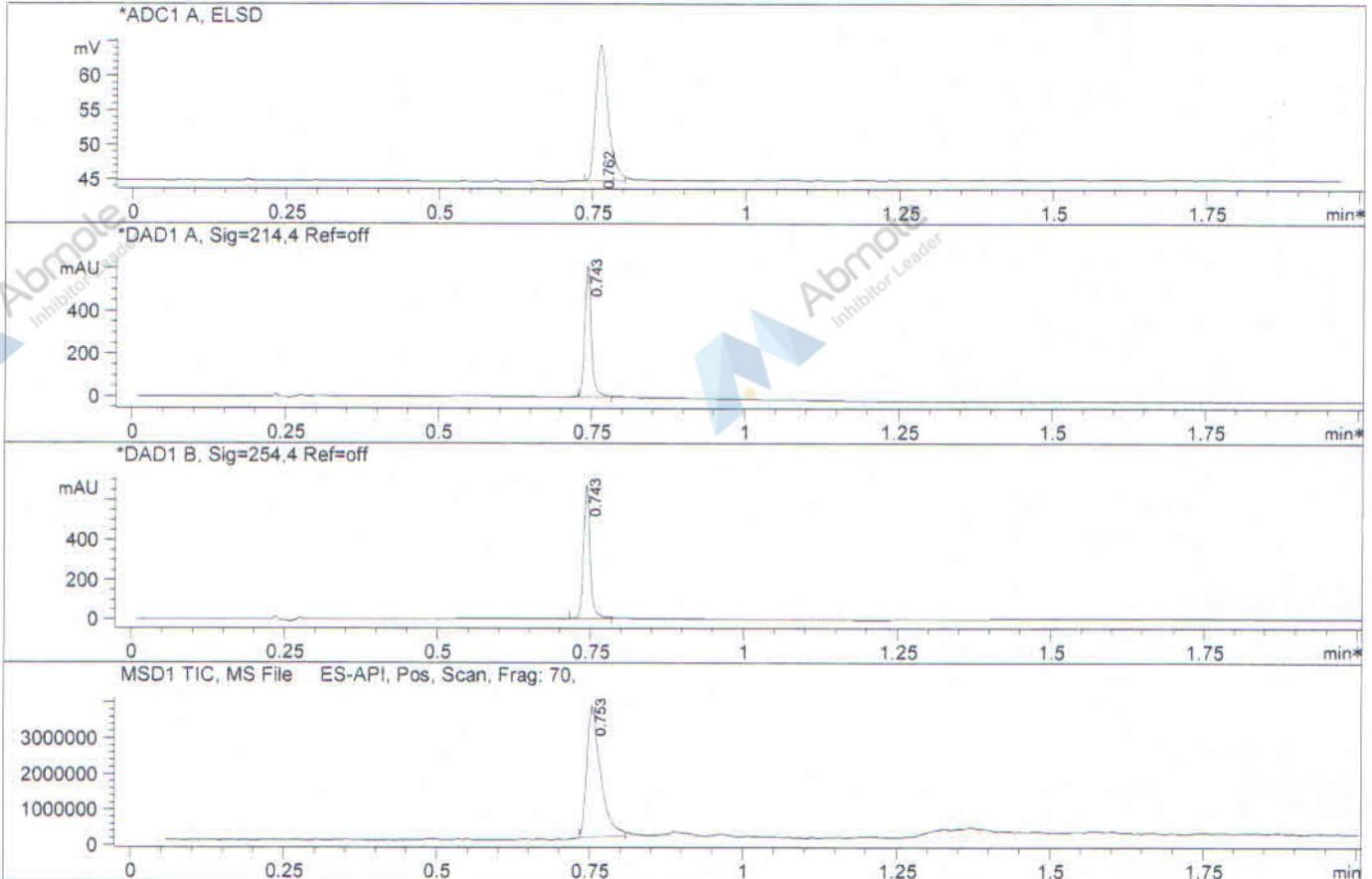


LC/MS Report

File D:\DATA
 Injection Date : 28 Aug 14 06:45 pm
 Sample Name : A494
 Acq. Operator : XXXX
 Spec. Reported : MS Integration
 Acq. Method : C:\Chem32\1\METHODS\1-POS-2MIN.M
 Analysis Method : C:\Chem32\1\METHODS\1-POS-2MIN.M
 Sample Info : Easy-Access Method: '1-POS-2MIN'
 Method Info : Mobile Phase: A: Water(0.01%TFA) B: ACN(0.01%TFA)
 Gradient: 5%B increase to 100%B within 0.8min,100%B for 1.1min.
 Flow Rate:1.5mL/min
 Column: Chromolith Fast Gradien RP-18e,50-3mm.
 Column Temperature: 40C
 Mass Range:100-1100



Integration Results for ADC1 A, ELSD

RetTim	Width	Area	Height	Area%
0.76	0.02	29.07	19.57	100.00

Integration Results for DAD1 A, Sig=214.4 Ref=off

RetTim	Width	Area	Height	Area%
0.74	0.01	478.11	615.21	100.00

Integration Results for DAD1 B, Sig=254.4 Ref=off

RetTim	Width	Area	Height	Area%
0.74	0.01	527.36	669.81	100.00

Ret. Time: 0.90

<<<< POSITIVE SPECTRA >>>>

