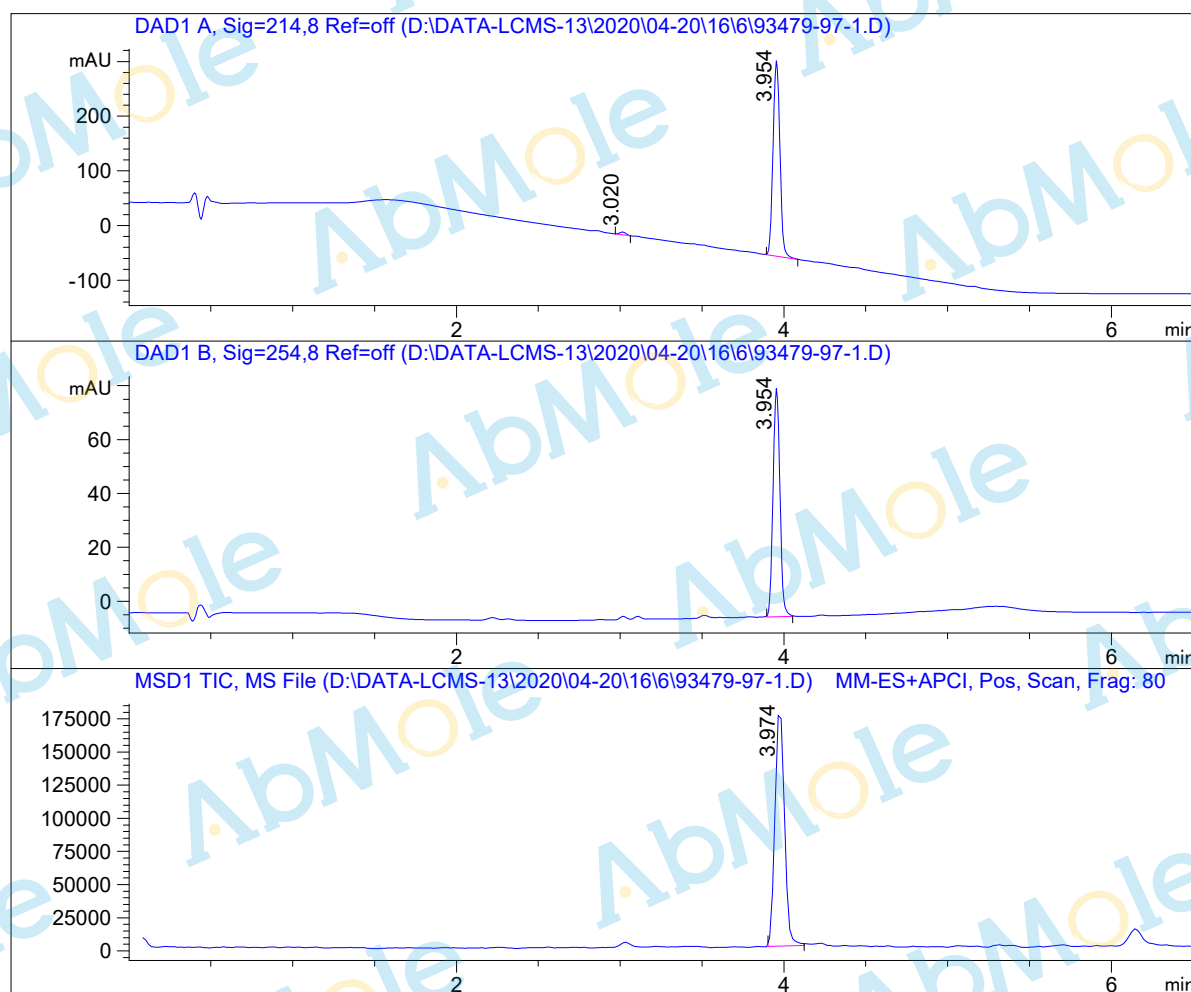


LCMS Report

Sample Name : Glimepiride-01
Data File : D:\DATA-LCMS-13\2020\04-20\16\6\93479-97-1.D
Injection Date : Thu, 16. Apr. 2020 Inj. Vol. : 1ul
Acq Operator : LCMS-13 Location : Vial 63
Acq. Method : D:\data-lcms-13\2020\04-20\16\6\P-05-95-TFA.M
Method Info. : column:Xbridge C18 5um 4.6*50mm ;mobile phase:B (ACN)
A(0.05%TFA) ; gradient (B%)!as Acq.Method above



Integration Results

Signal 1: DAD1 A, Sig=214,8 Ref=off

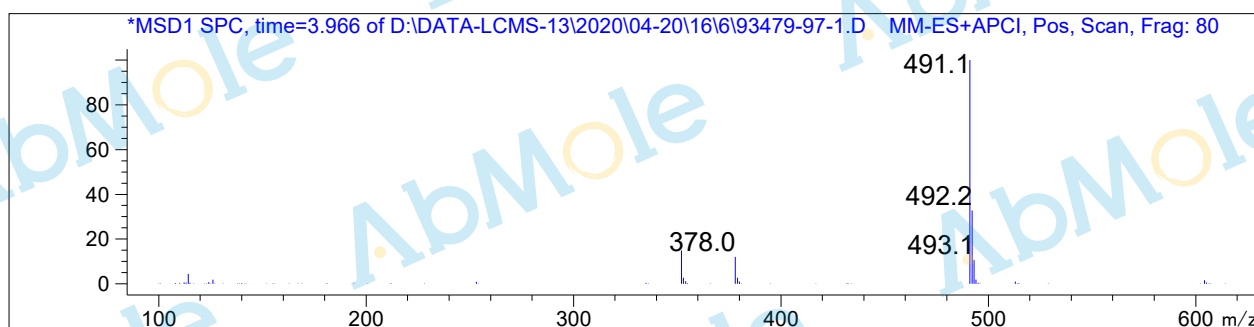
| # | R.T. | Type | Height | Height% | Width | Area | Area % |
|---|-------|------|---------|---------|-------|----------|--------|
| 1 | 3.020 | MF | 5.282 | 1.449 | 0.045 | 14,268 | 1.348 |
| 2 | 3.954 | MF | 359.324 | 98.551 | 0.048 | 1044.497 | 98.652 |

Signal 2: DAD1 B, Sig=254,8 Ref=off

| # | R.T. | Type | Height | Height% | Width | Area | Area % |
|---|-------|------|--------|---------|-------|---------|---------|
| 1 | 3.954 | BB | 84.943 | 100.000 | 0.048 | 248.591 | 100.000 |

Signal 3: MSD1 TIC, MS File

| # | R.T. | Type | Height | Height% | Width | Area | Area % |
|---|-------|------|------------|---------|-------|------------|---------|
| 1 | 3.974 | BB | 180994.297 | 100.000 | 0.067 | 718960.438 | 100.000 |



*** End of Report ***