

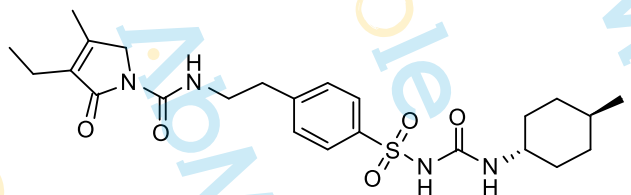
10.326

8.388
8.374
8.359
7.822
7.802
7.469
7.447

6.283
6.264

3.525
3.508
3.492
3.475
3.326
3.220
3.182
3.163
4.169
2.919
2.901
2.884
2.511
2.506
2.502
2.498
2.213
2.194
2.176
2.156
2.013
1.695
1.683
1.670
1.665
1.612
1.583
1.264
1.235
1.109
1.103
1.079
1.072
0.995
0.976
0.958
0.927
0.901
0.864
0.829
0.813
-0.001

Sample Name: Glimepiride-01
Chemical Formula: C₂₄H₃₄N₄O₅S
Molecular Weight: 490.62



CAS: 93479-97-1

DMSO-d6, 400 MHz

0.92

1.00

2.01

2.03

0.96

2.03

2.04

1.04

2.03

3.10

2.05

2.01

2.05

1.04

3.11

3.17

2.02

2.00

10

8

6

4

2

0

-2PPM