

File D:\DATA\PRO2302-LCMS

Injection Date : 12 Nov 14 9:05 am +0800

Tgt Mass (EZ) :

Sample Name : GSK256066-LCMS

Location : P2-E-07

Acq. Operator : LCMS

Inj : 1

Spec. Reported : MS Integration

Inj Volume : 1 ul

Acq. Method : C:\Chem32\1\METHODS\1-POS-3MIN.M

Analysis Method : C:\Chem32\1\METHODS\1-POS-3MIN.M

Sample Info : Easy-Access Method: '1-POS-3min'

Method Info : Mobile Phase: A: water(0.01%TFA) B: ACN(0.01%TFA)

Gradient: 5%-95% B in 1.7 min

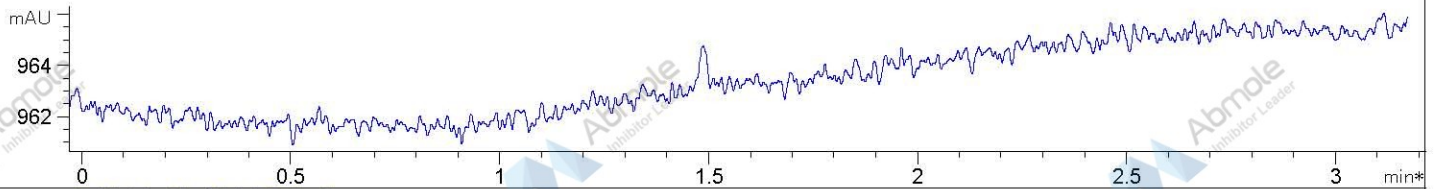
Flow Rate: 2.2 ml/min

Column: SunFire C18, 4.6*50mm, 3.5um

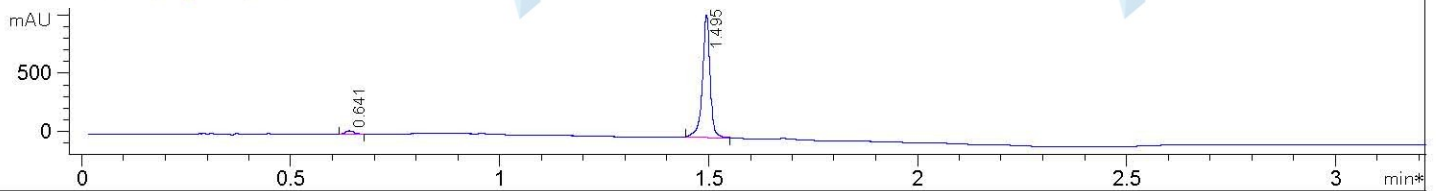
Column Temperature: 50 C

MASS Range:110-900

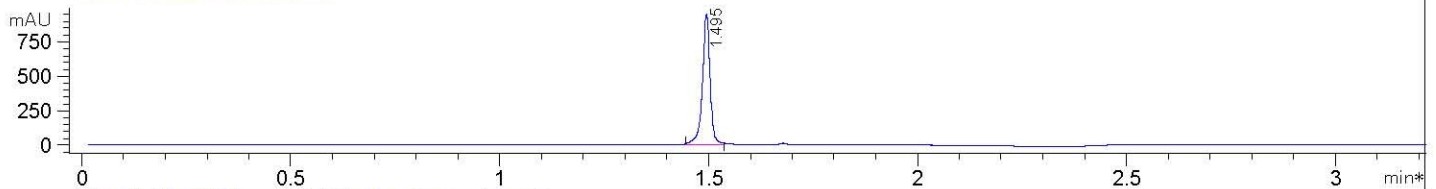
*ADC1 A, ELSD



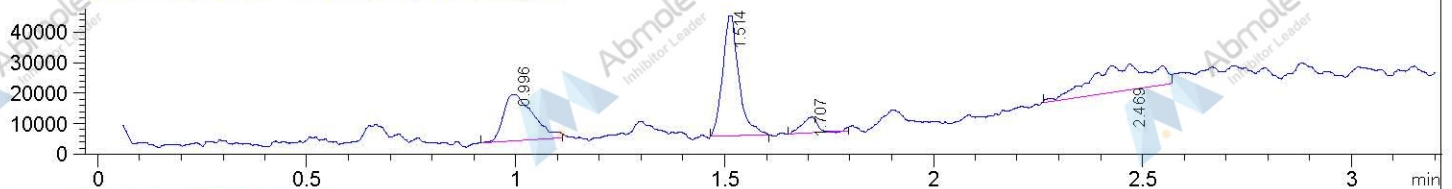
*DAD1 A, Sig=214,4 Ref=off



*DAD1 B, Sig=254,4 Ref=off



MSD1 TIC, MS File ES-API, Pos, Scan, Frag: 70



Integration Results for ADC1 A, ELSD

RetTim	Width	Area	Height	Area%
--------	-------	------	--------	-------

Integration Results for DAD1 A, Sig=214,4 Ref=off

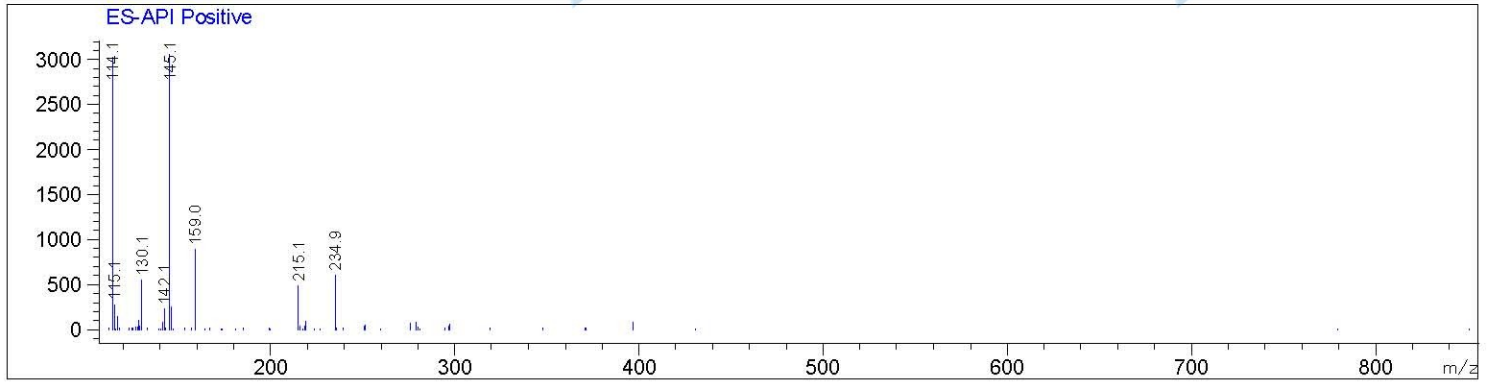
RetTim	Width	Area	Height	Area%
0.64	0.02	41.00	30.38	2.94
1.49	0.02	1354.24	1052.72	97.06

Integration Results for DAD1 B, Sig=254,4 Ref=off

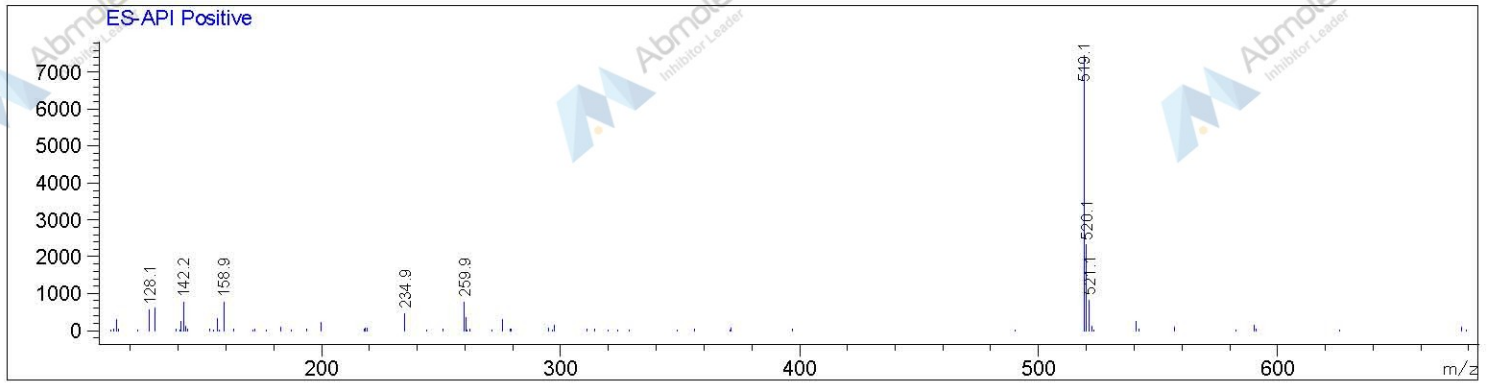
RetTim	Width	Area	Height	Area%
1.49	0.02	1205.39	944.48	100.00

Ret. Time: 1.00

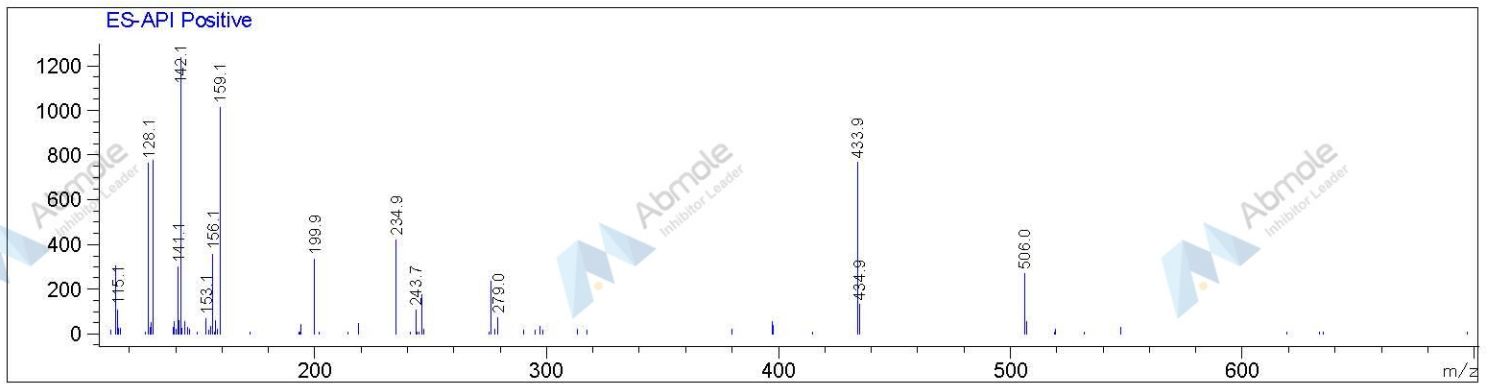
<<<< POSITIVE SPECTRA >>>>



Ret. Time: 1.51



Ret. Time: 1.71



Ret. Time: 2.47

