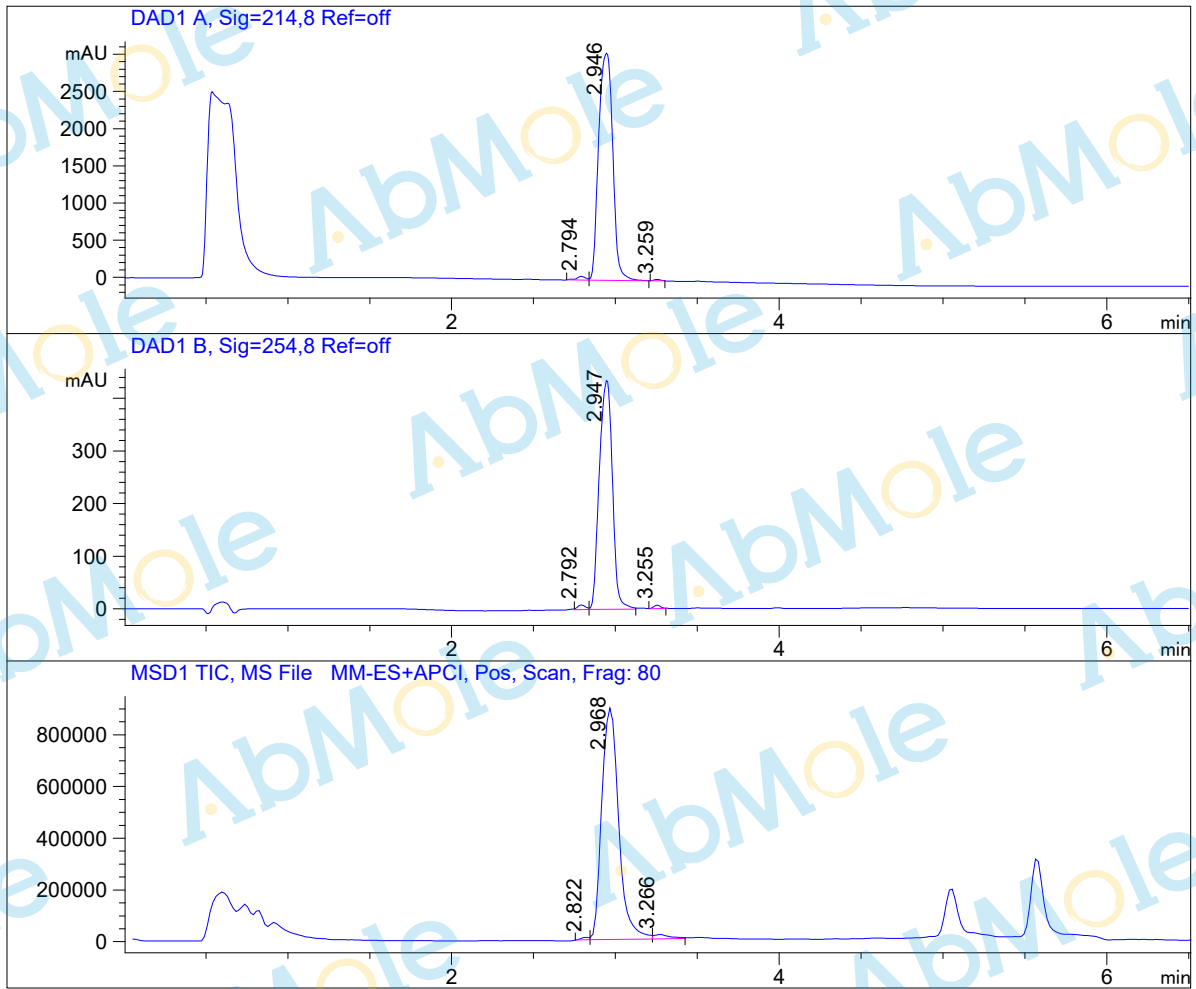


LC - MS Report

Sample Name : GS-9620-03
 Data File : D:\DATA-LCMS-13\2019\12-19\25\2\GS-9620-03.D
 Injection Date : Wed, 25. Dec. 2019 Inj. Vol. : 5ul
 Acq Operator : LCMS-13 Location : Vial 33
 Acq. Method : D:\data-lcms-13\2019\12-19\25\2\P-05-95.M
 Method Info. : column:C18;column size:4.6*50mm ;mobile phase:B (ACN)
 A(0.02%NH4Ac); gradient(B%)!as Acq.Method above



Integration Results

Signal 1: DAD1 A, Sig=214,8 Ref=off

#	R.T.	Type	Height	Height%	Width	Area	Area %
1	2.794	MF	49.200	1.575	0.068	200.933	1.090
2	2.946	FM	3054.982	97.800	0.099	18179.027	98.604
3	3.259	MM	19.517	0.625	0.048	56.527	0.307

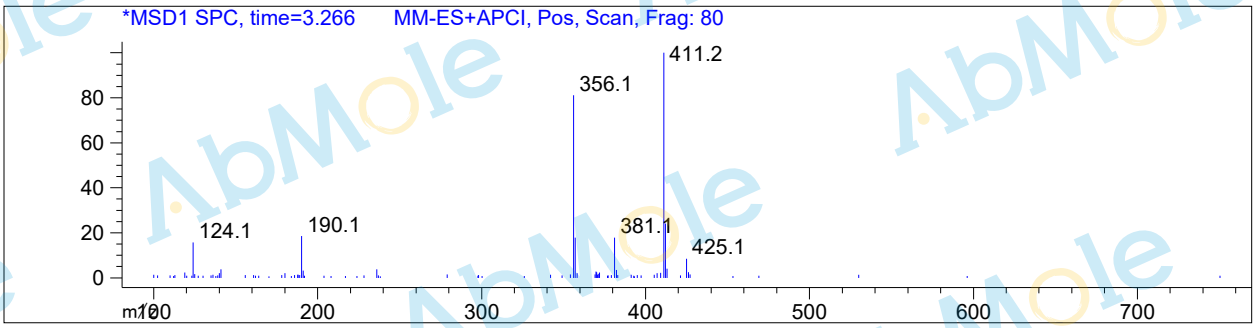
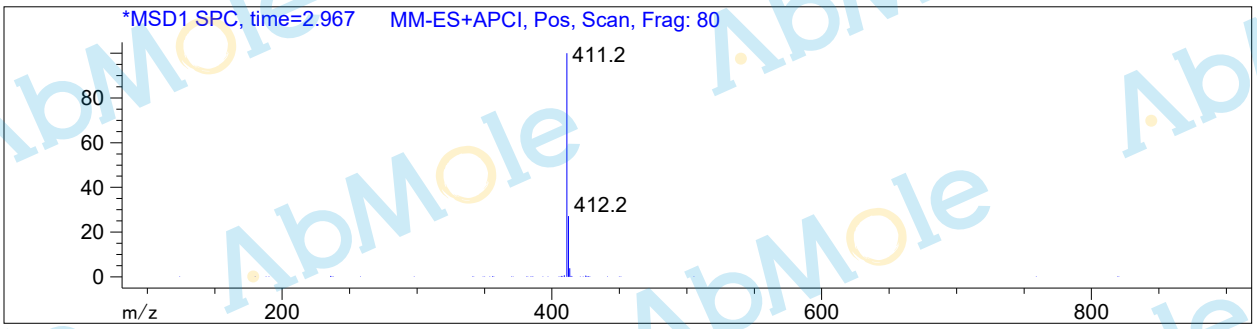
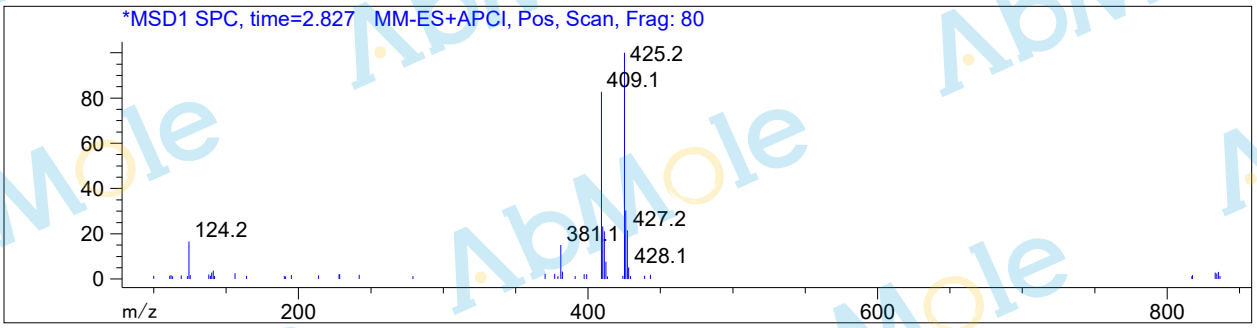
#	R.T.	Type	Height	Height%	Width	Area	Area %
---	------	------	--------	---------	-------	------	--------

Signal 2: DAD1 B, Sig=254,8 Ref=off

#	R.T.	Type	Height	Height%	Width	Area	Area %
1	2.792	FM	8.811	1.954	0.058	30.662	1.246
2	2.947	VB	435.162	96.512	0.091	2407.956	97.887
3	3.255	MF	6.914	1.533	0.051	21.318	0.867

Signal 3: MSD1 TIC, MS File

#	R.T.	Type	Height	Height%	Width	Area	Area %
1	2.822	MF	9838.646	1.062	0.077	45344.941	0.684
2	2.968	MF	899855.125	97.168	0.120	6.475e+006	97.672
3	3.266	FM	16392.453	1.770	0.111	109002.453	1.644



*** End of Report ***