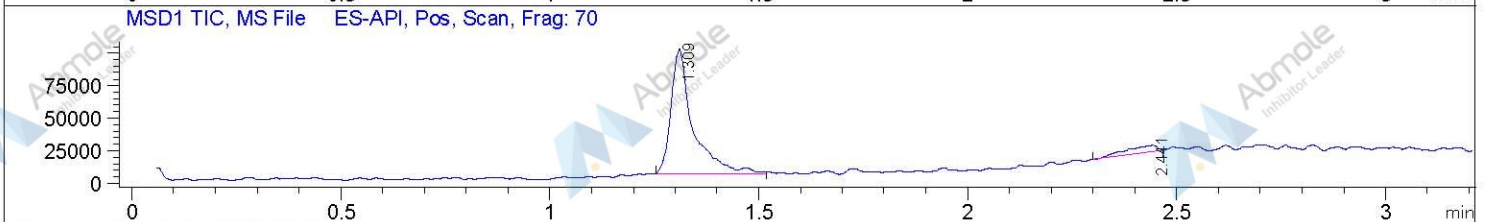
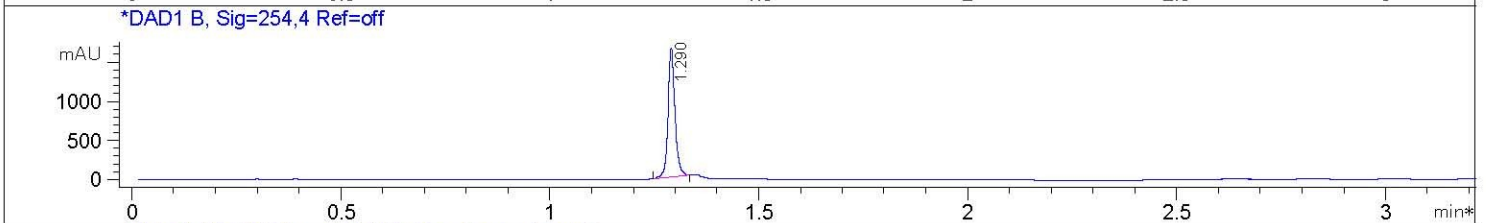
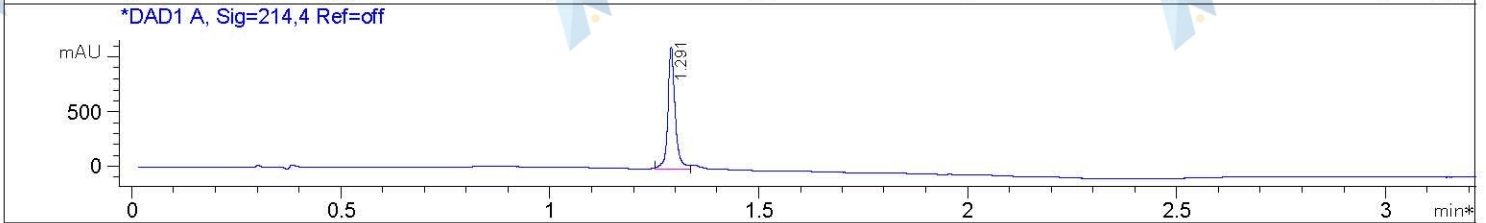
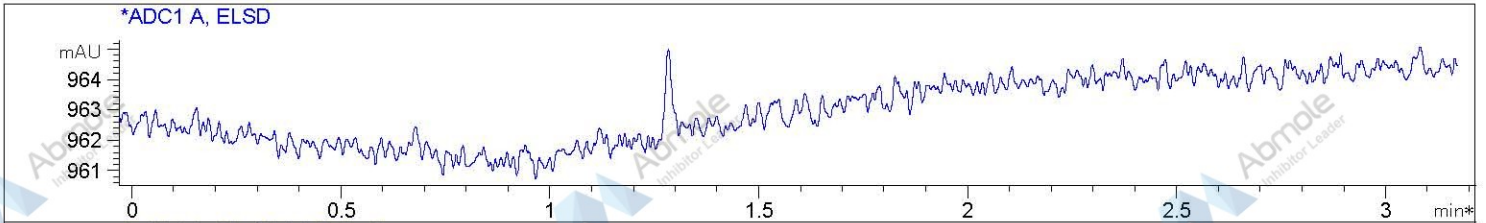


File D:\DATA\PRO2301-LCMS

Injection Date : 12 Nov 14 9:01 am +0800 Tgt Mass (EZ) :
 Sample Name : GDC-0980-LCMS Location : P2-E-06
 Acq. Operator : LCMS Inj : 1
 Spec. Reported : MS Integration Inj Volume : 2 ul
 Acq. Method : C:\Chem32\1\METHODS\1-POS-3MIN.M
 Analysis Method : C:\Chem32\1\METHODS\1-POS-3MIN.M
 Sample Info : Easy-Access Method: '1-POS-3min'
 Method Info : Mobile Phase: A: water(0.01%TFA) B: ACN(0.01%TFA)
 Gradient: 5%-95% B in 1.7 min
 Flow Rate: 2.2 ml/min
 Column: SunFire C18, 4.6*50mm, 3.5um
 Column Temperature: 50 C
 MASS Range:110-900



Integration Results for ADC1 A, ELSD

RetTim	Width	Area	Height	Area%
--------	-------	------	--------	-------

Integration Results for DAD1 A, Sig=214,4 Ref=off

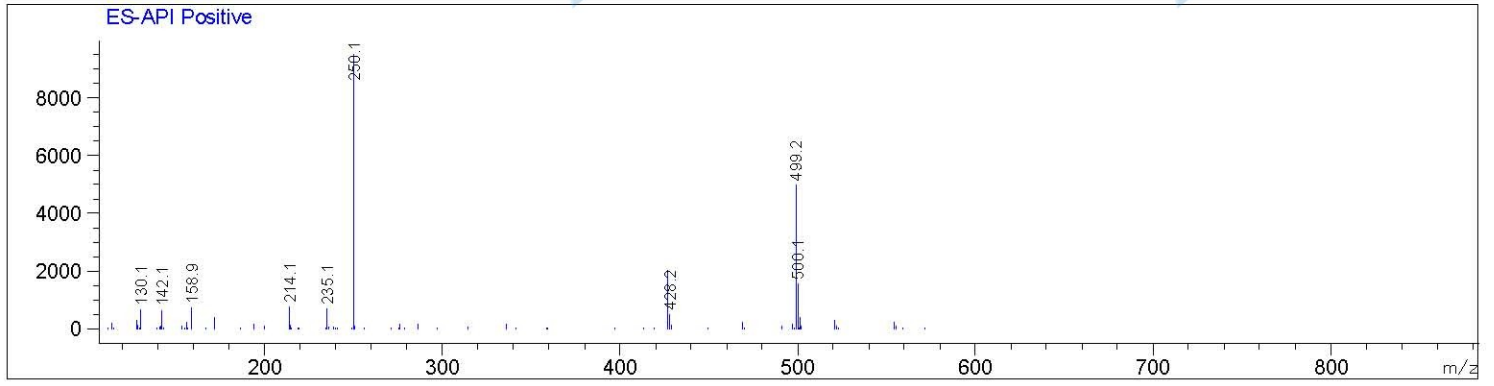
RetTim	Width	Area	Height	Area%
1.29	0.02	1342.87	1108.57	100.00

Integration Results for DAD1 B, Sig=254,4 Ref=off

RetTim	Width	Area	Height	Area%
1.29	0.02	1891.91	1642.90	100.00

Ret. Time: 1.31

<<<< POSITIVE SPECTRA >>>>



Ret. Time: 2.44

