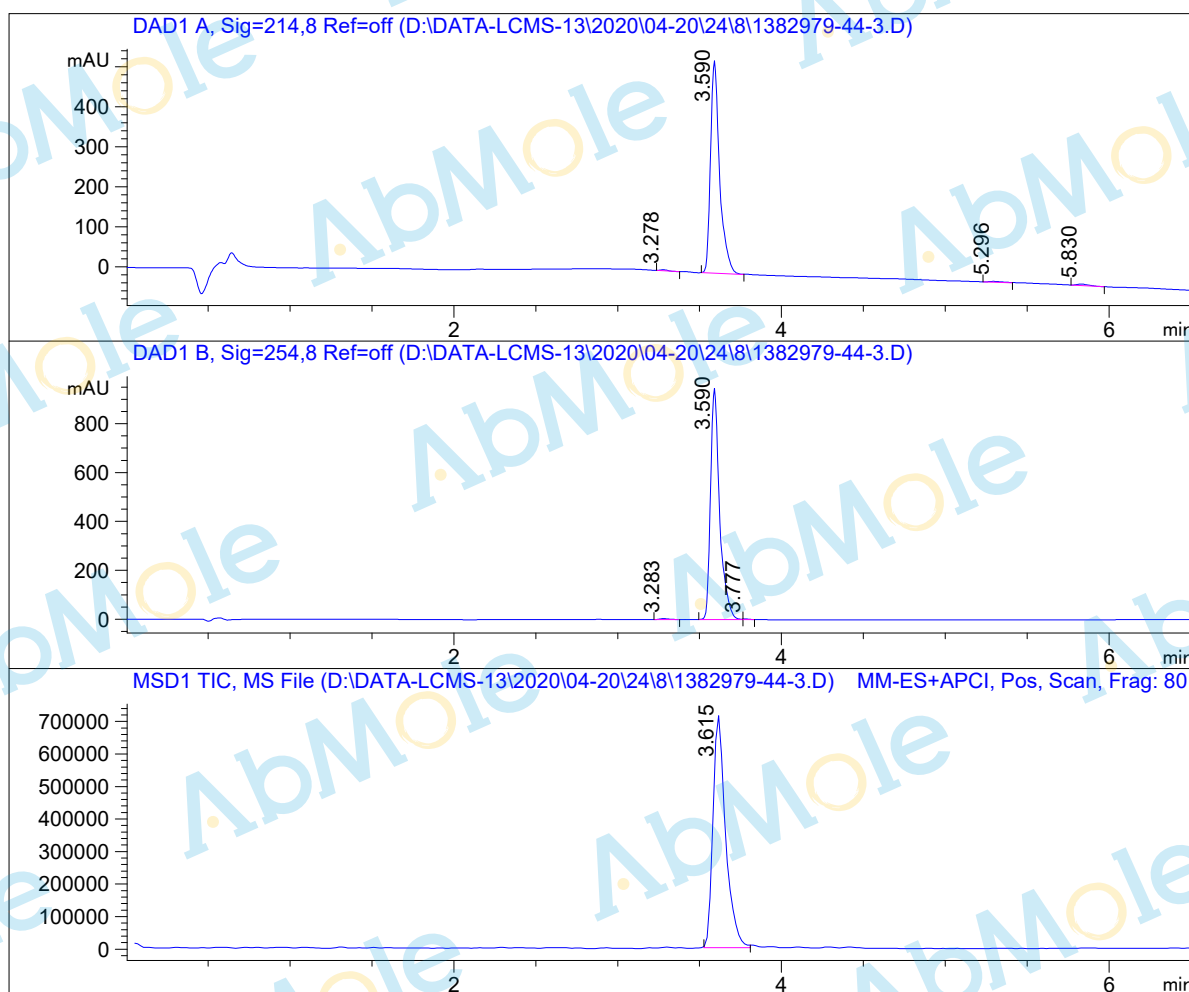


LCMS Report

Sample Name : GDC-0084-01
 Data File : D:\DATA-LCMS-13\2020\04-20\24\8\1382979-44-3.D
 Injection Date : Sat, 25. Apr. 2020 Inj. Vol. : 2ul
 Acq Operator : LCMS-13 Location : Vial 62
 Acq. Method : D:\data-lcms-13\2020\04-20\24\8\P-05-60.M
 Method Info. : column:Xbridge C18 5um 4.6*30mm ;mobile phase:B (ACN)
 A(0.02%NH4Ac); gradient(B%)!as Acq.Method above



Integration Results

Signal 1: DAD1 A, Sig=214,8 Ref=off

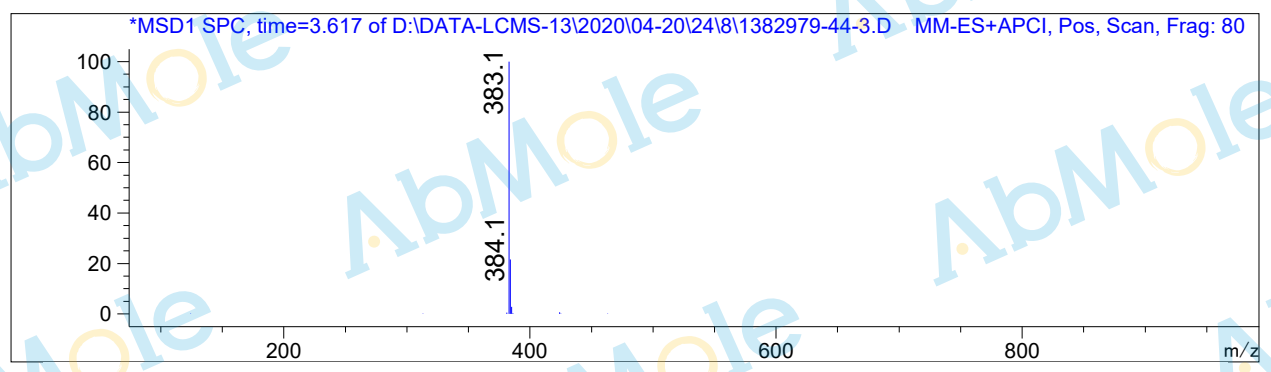
#	R.T.	Type	Height	Height%	Width	Area	Area %
1	3.278	BB	2.714	0.503	0.051	9.098	0.436
2	3.590	BB	531.336	98.442	0.057	2049.571	98.200
3	5.296	BB	1.899	0.352	0.077	10.322	0.495
4	5.830	BB	3.796	0.703	0.072	18.155	0.870

Signal 2: DAD1 B, Sig=254,8 Ref=off

#	R.T.	Type	Height	Height%	Width	Area	Area %
1	3.283	BB	3.871	0.405	0.054	13.910	0.377
2	3.590	MF	950.527	99.368	0.064	3666.208	99.482
3	3.777	FM	2.173	0.227	0.040	5.164	0.140

Signal 3: MSD1 TIC, MS File

#	R.T.	Type	Height	Height%	Width	Area	Area %
1	3.615	MF	722857.500	100.000	0.088	3.835e+006	100.000



*** End of Report ***