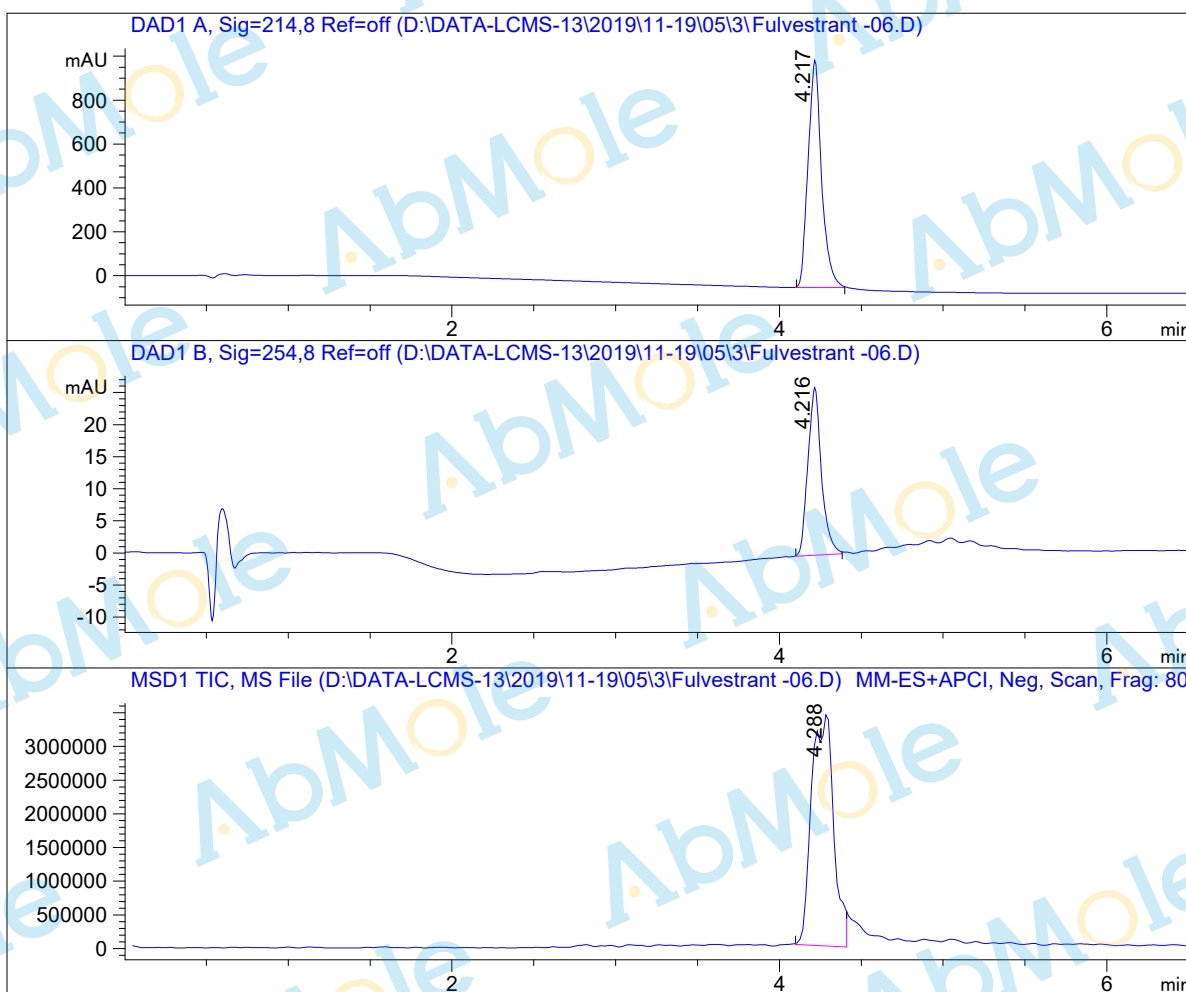


LC-MS Report

Sample Name : Fulvestrant-06
Data File : D:\DATA-LCMS-13\2019\11-19\05\3\Fulvestrant-06.D
Injection Date : Tue, 5. Nov. 2019 Inj. Vol. : 5ul
Acq Operator : LCMS-13 Location : Vial 68
Acq. Method : D:\data-lcms-13\2019\11-19\05\3\N-05-95.M
Method Info. : column:C18;column size:4.6*50mm ;mobile phase:B (ACN)
A(0.02%NH4Ac); gradient(B%)!as Acq.Method above



Integration Results

Signal 1: DAD1 A, Sig=214,8 Ref=off

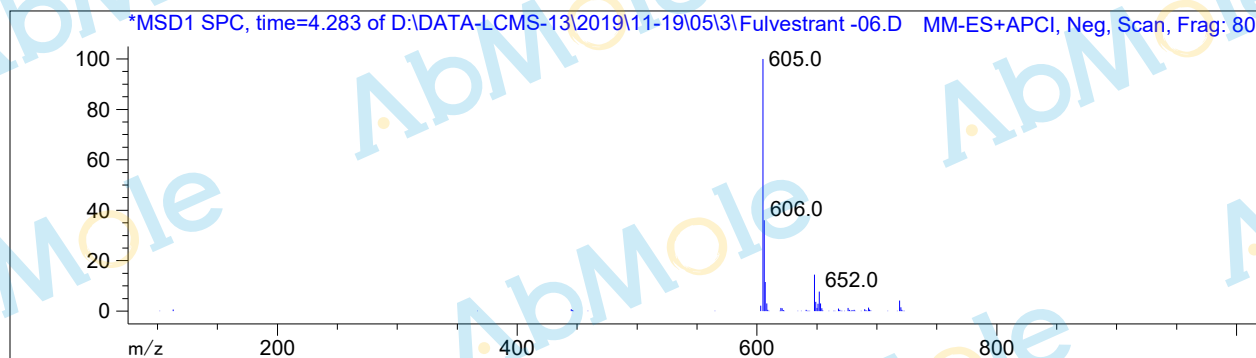
#	R.T.	Type	Height	Height%	Width	Area	Area %
1	4.217	MM	1036.835	100.000	0.095	5893.608	100.000

Signal 2: DAD1 B, Sig=254,8 Ref=off

#	R.T.	Type	Height	Height%	Width	Area	Area %
1	4.216	MM	26.165	100.000	0.096	150.038	100.000

Signal 3: MSD1 TIC, MS File

#	R.T.	Type	Height	Height%	Width	Area	Area %
1	4.288	MM	3.462e+006	100.000	0.157	3.265e+007	100.000



*** End of Report ***