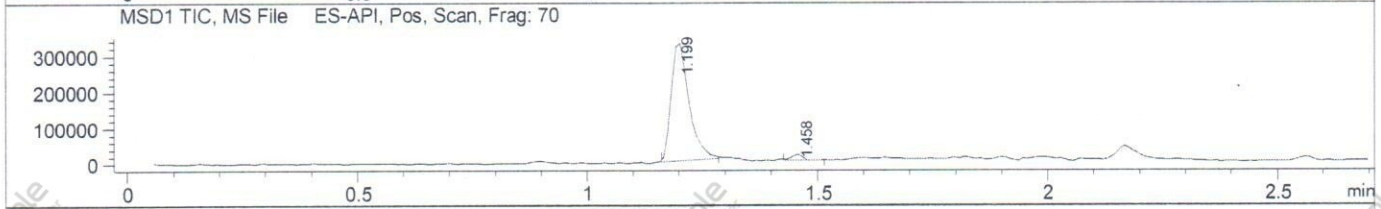
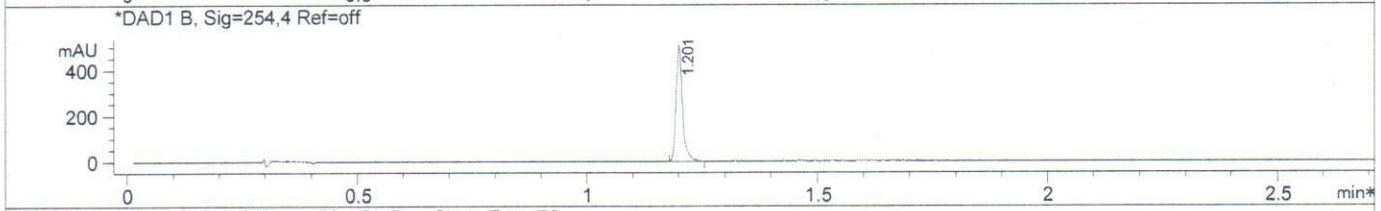
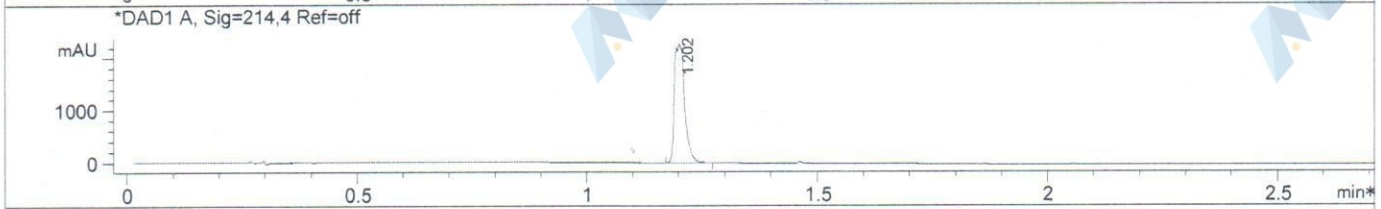
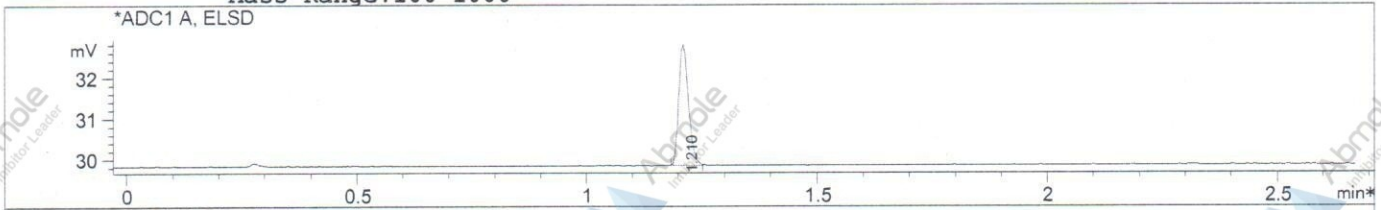


MS Report

File D:\DATA  
 Injection Date : 24 Sep 14 1:45  
 Sample Name : Fasudil hydrochloride-02  
 Acq. Operator : XXXX  
 Spec. Reported : MS Integration  
 Acq. Method : D:\METHODS\1-POS-MON.M  
 Analysis Method : D:\METHODS\1-POS-MON.M  
 Sample Info : Easy-Access Method: '1-POS-MON'  
 Method Info : Mobile Phase: A: water(10 mM NH4HCO3) B:ACN  
 Gradient: 5%B increase to 95%B within1.2min,  
 95%B for 1.3min,back to 5%B within 0.01min.  
 Flow Rate: 2 mL/min  
 Column: Xbridge, 3.5um, 50\*4.6mm  
 Oven Temperature: 50 C  
 Mass Range:100-1000



Integration Results for ADC1 A, ELSD

| RetTim | Width | Area | Height | Area%  |
|--------|-------|------|--------|--------|
| 1.21   | 0.02  | 4.39 | 2.96   | 100.00 |

Integration Results for DAD1 A, Sig=214,4 Ref=off

| RetTim | Width | Area    | Height  | Area%  |
|--------|-------|---------|---------|--------|
| 1.20   | 0.02  | 3494.88 | 2267.08 | 100.00 |

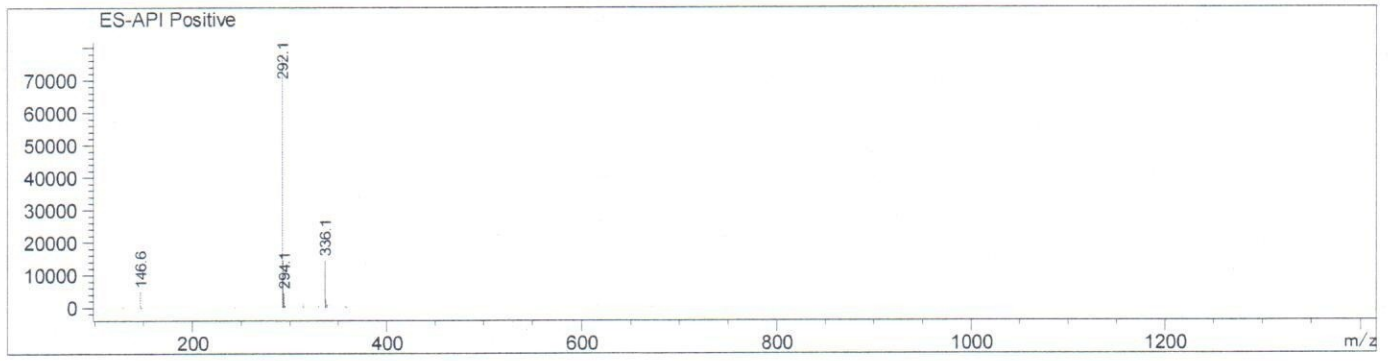
Integration Results for DAD1 B, Sig=254,4 Ref=off

| RetTim | Width | Area   | Height | Area%  |
|--------|-------|--------|--------|--------|
| 1.20   | 0.01  | 494.81 | 511.11 | 100.00 |

MS Report

Ret. Time: 1.20

<<<< POSITIVE SPECTRA >>>>



Ret. Time: 1.46

