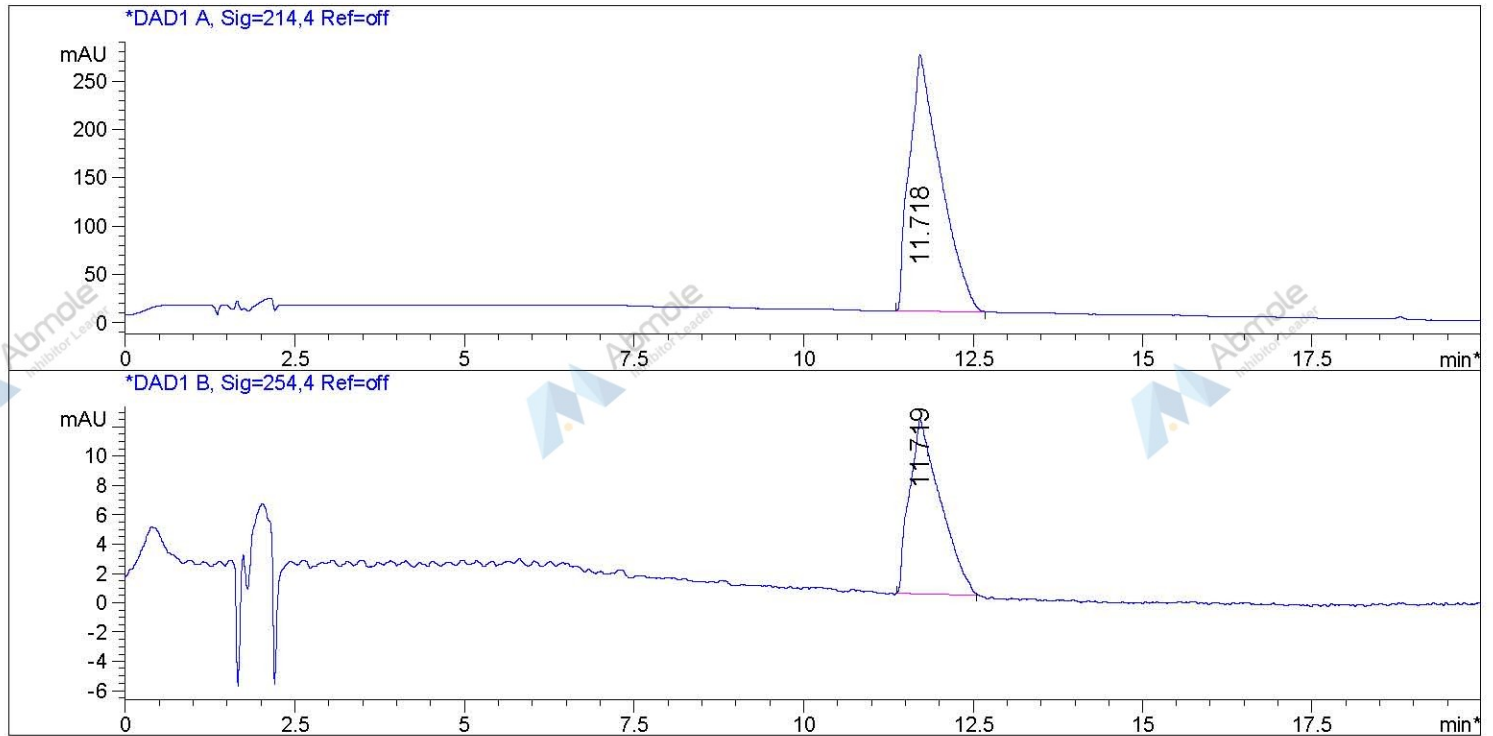


=====  
Acq. Operator :  
Acq. Instrument :  
Injection Date :  
  
Acq. Method :

Method Info : Mobile Phase: A: water(0.01%TFA) B:ACN(0.01%TFA)  
Gradient: 5%B for 0.2 min, increase to 95%B within 15min,  
95%B for 5min, back to 5%B within 0.01min  
Flow Rate:1.0ml/min  
Column : Ecilpse XDB-C18 , 5um, 4.6\*150mm  
Oven Temperature :50C

Sample Info : Easy-Access Method: 'HPLC'



=====  
Area Percent Report  
=====

Sorted By : Signal  
Multiplier : 1.0000  
Dilution : 1.0000  
Use Multiplier & Dilution Factor with ISTDs

Signal 1: DAD1 A, Sig=214,4 Ref=off  
Signal has been modified after loading from rawdata file!

Peak #	RetTime [min]	Type	Width [min]	Area [mAU*s]	Height [mAU]	Area %
1	11.718	BB	0.3982	8522.44336	265.71652	100.0000

Totals : 8522.44336 265.71652

Signal 2: DAD1 B, Sig=254,4 Ref=off  
Signal has been modified after loading from rawdata file!

Peak #	RetTime [min]	Type	Width [min]	Area [mAU*s]	Height [mAU]	Area %
1	11.719	BB	0.3924	376.50391	11.85774	100.0000

Totals : 376.50391 11.85774

=====  
\*\*\* End of Report \*\*\*