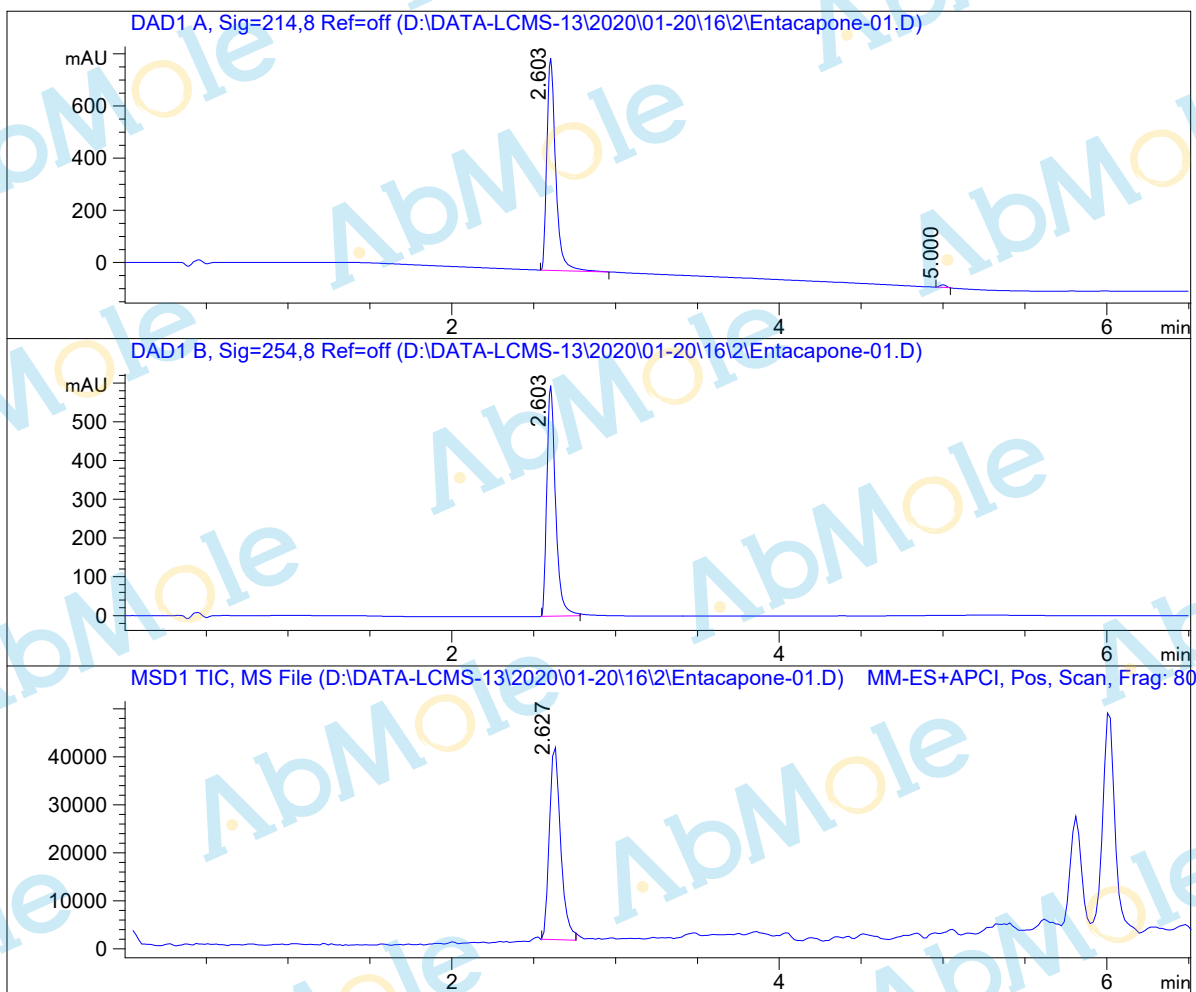


# LC-MS Report

Sample Name : Entacapone-01  
Data File : D:\DATA-LCMS-13\2020\01-20\16\2\Entacapone-01.D  
Injection Date : Thu, 16. Jan. 2020 Inj. Vol. : 3ul  
Acq Operator : LCMS-13 Location : Vial 12  
Acq. Method : D:\data-lcms-13\2020\01-20\16\2\P-05-95.M  
Method Info. : column:Xbridge C18 5um 4.6\*30mm ;mobile phase:B(ACN)  
A(0.02%NH4Ac); gradient(B%)!as Acq.Method above



## Integration Results

Signal 1: DAD1 A, Sig=214,8 Ref=off

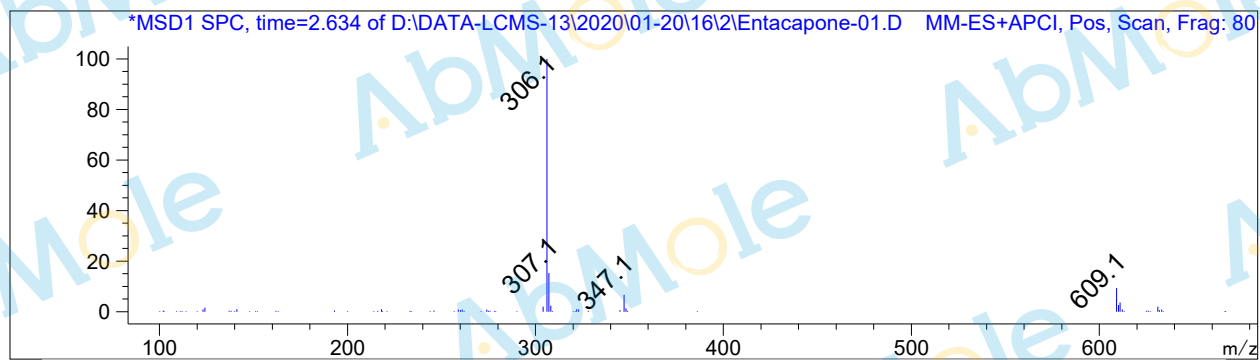
#	R.T.	Type	Height	Height%	Width	Area	Area %
1	2.603	MM	816.069	98.795	0.062	3058.104	99.134
2	5.000	MM	9.957	1.205	0.045	26.712	0.866

Signal 2: DAD1 B, Sig=254,8 Ref=off

#	R.T.	Type	Height	Height%	Width	Area	Area %
1	2.603	BB	594.892	100.000	0.057	2203.446	100.000

Signal 3: MSD1 TIC, MS File

#	R.T.	Type	Height	Height%	Width	Area	Area %
1	2.627	MM	41195.598	100.000	0.077	191469.719	100.000



\*\*\* End of Report \*\*\*