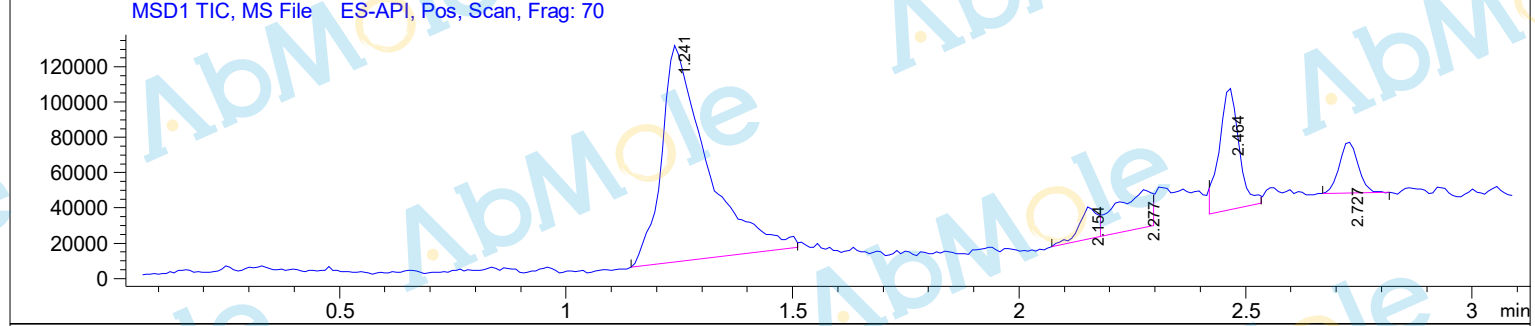
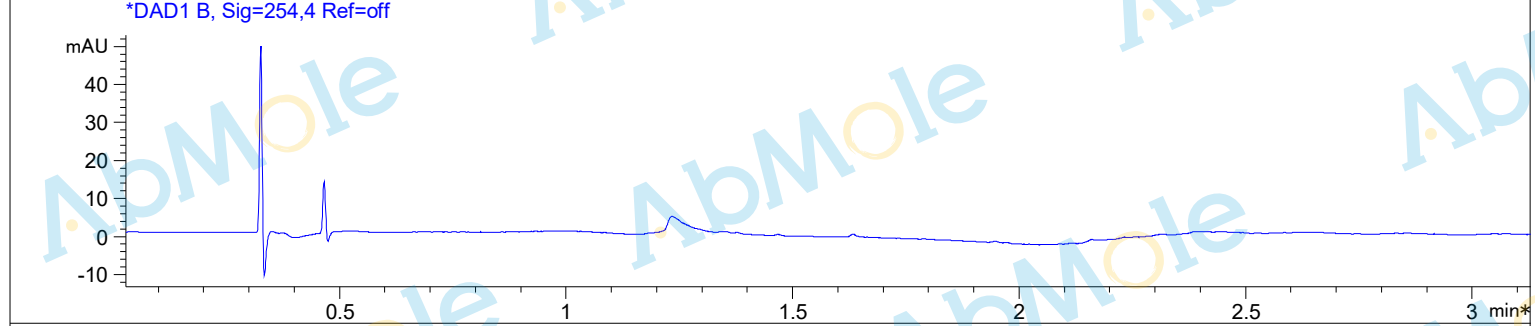
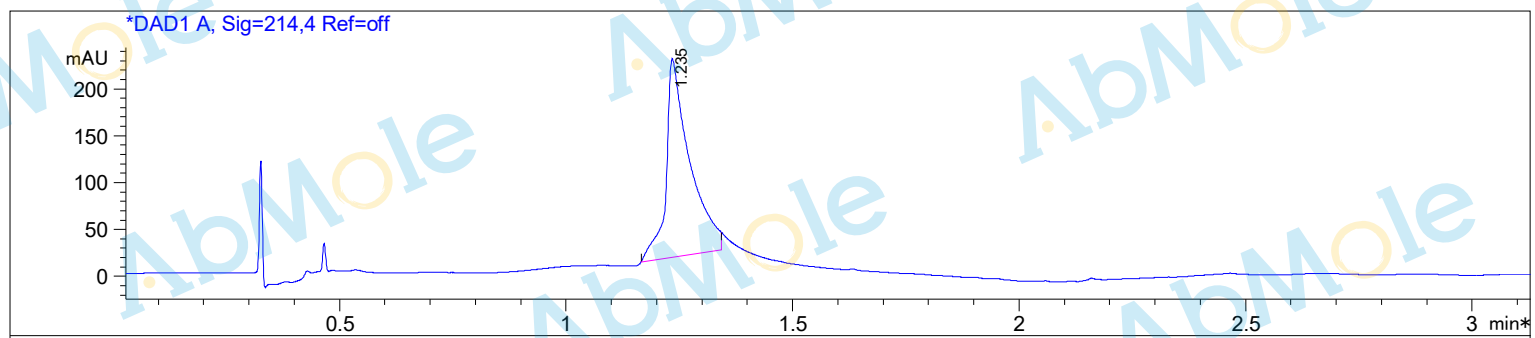


Injection Date : 16 Oct 20  
 Sample Name : Elamipretide TFA-01  
 Method Info : Column:SunFire C18 (4.6x 50 mm,3.5 um)  
 Mobile phase: H2O(0.01%TFA) (A) / ACN(0.01%TFA)(B)  
 Elution program: Gradient from 10 to95% of B in 1.4 min at 2ml/min  
 Temperature: 50 °C  
 Detection: UV (214 , 4 nm) and MS (ESI, Pos mode ,110 to 1000 amu)



Integration Results for DAD1 A, Sig=214,4 Ref=off

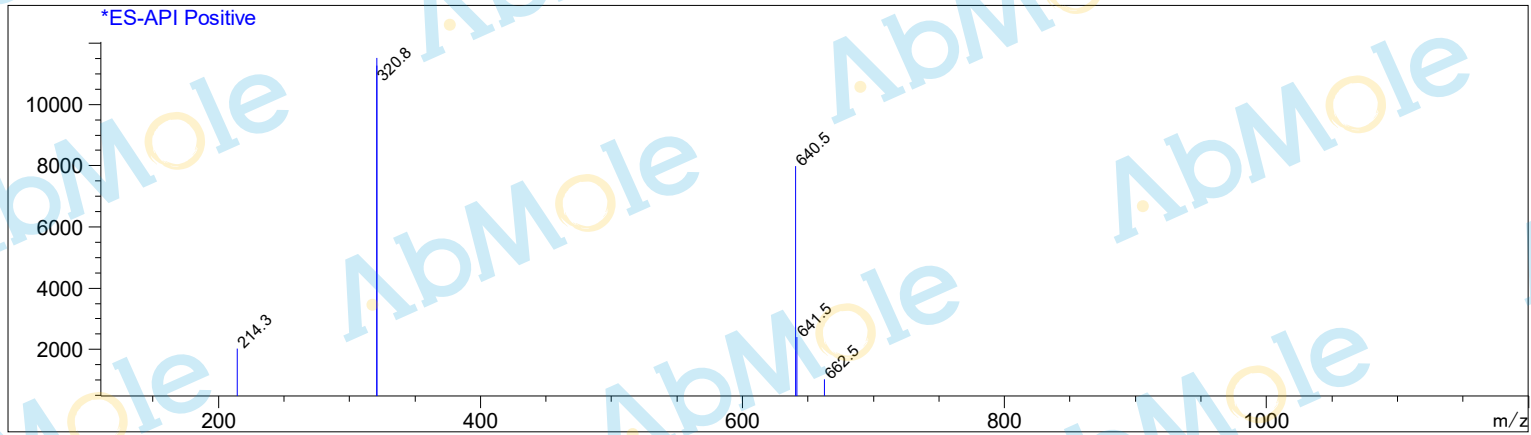
| RetTim | Width | Area   | Height | Area%  |
|--------|-------|--------|--------|--------|
| 1.23   | 0.05  | 776.27 | 212.01 | 100.00 |

Integration Results for DAD1 B, Sig=254,4 Ref=off

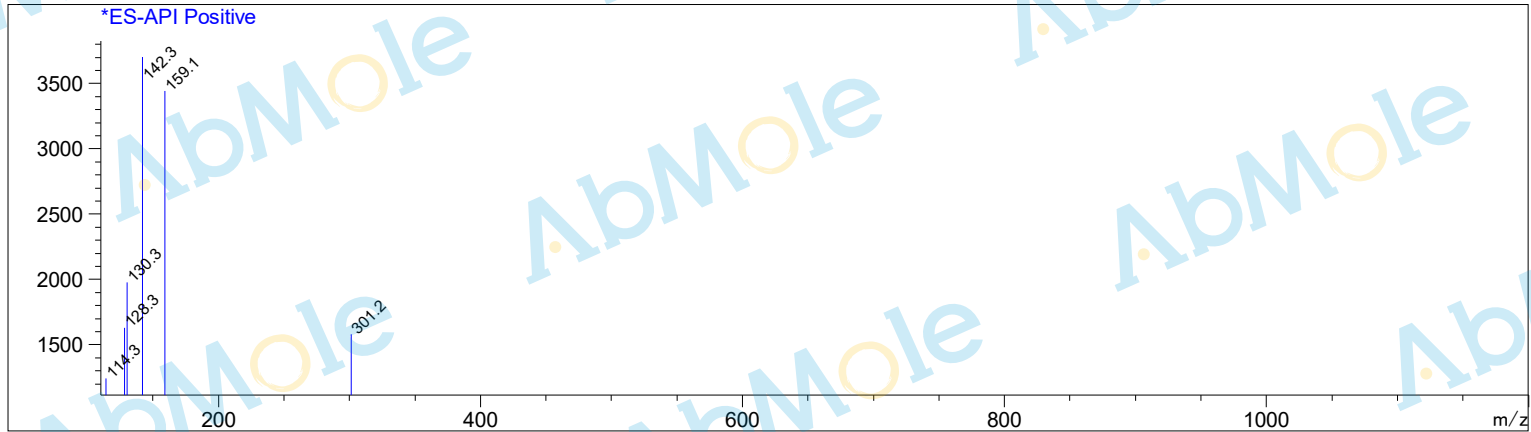
| RetTim | Width | Area | Height | Area% |
|--------|-------|------|--------|-------|
|        |       |      |        |       |

Ret. Time: 1.24

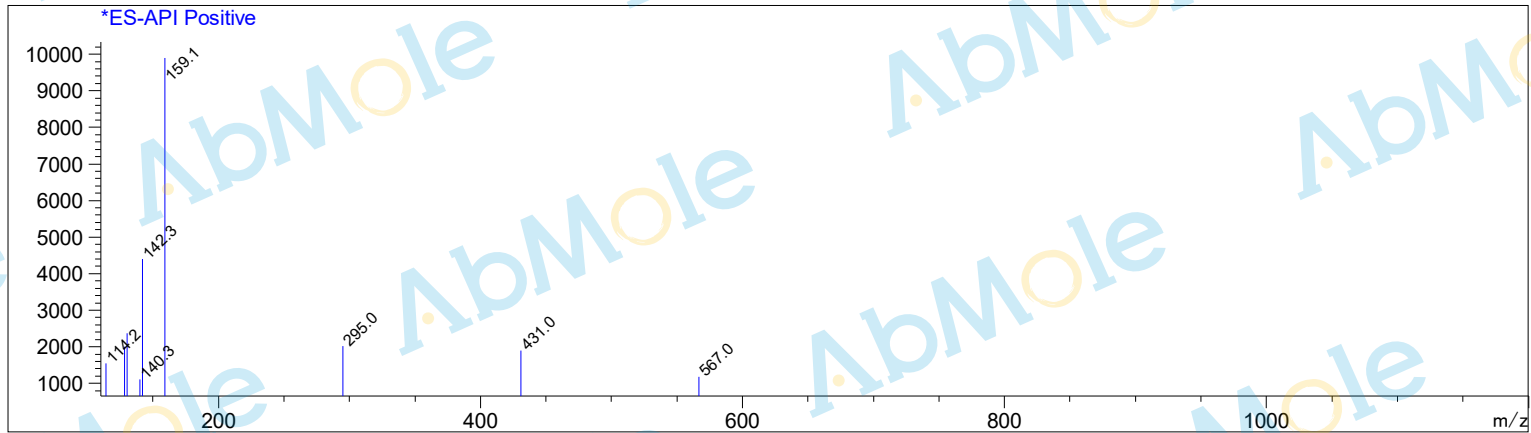
<<<< POSITIVE SPECTRA >>>>



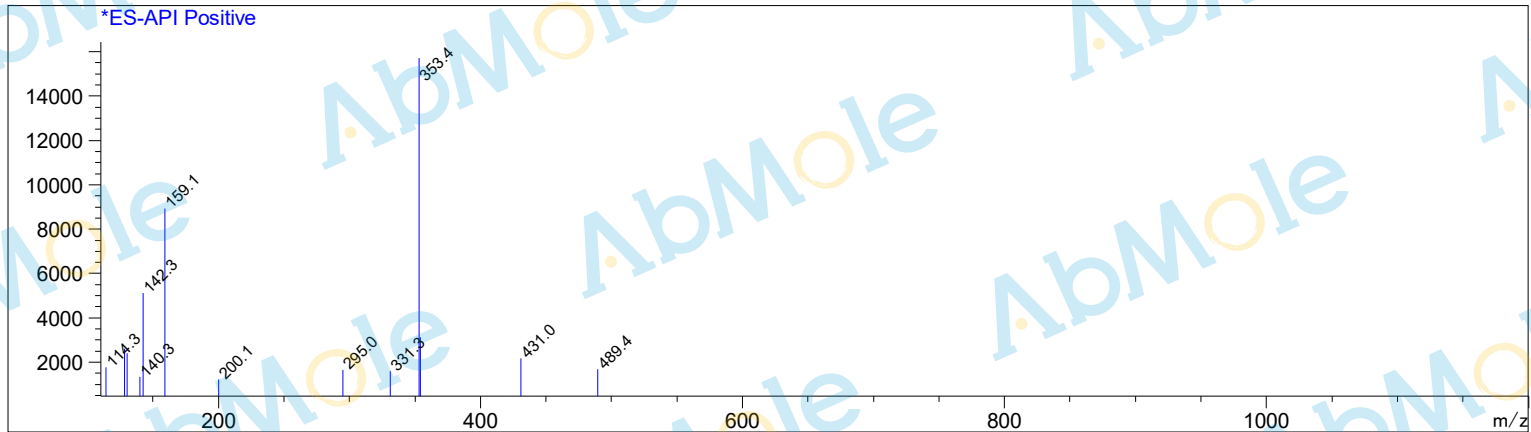
Ret. Time: 2.15



Ret. Time: 2.28



Ret. Time: 2.46



Ret. Time: 2.73

