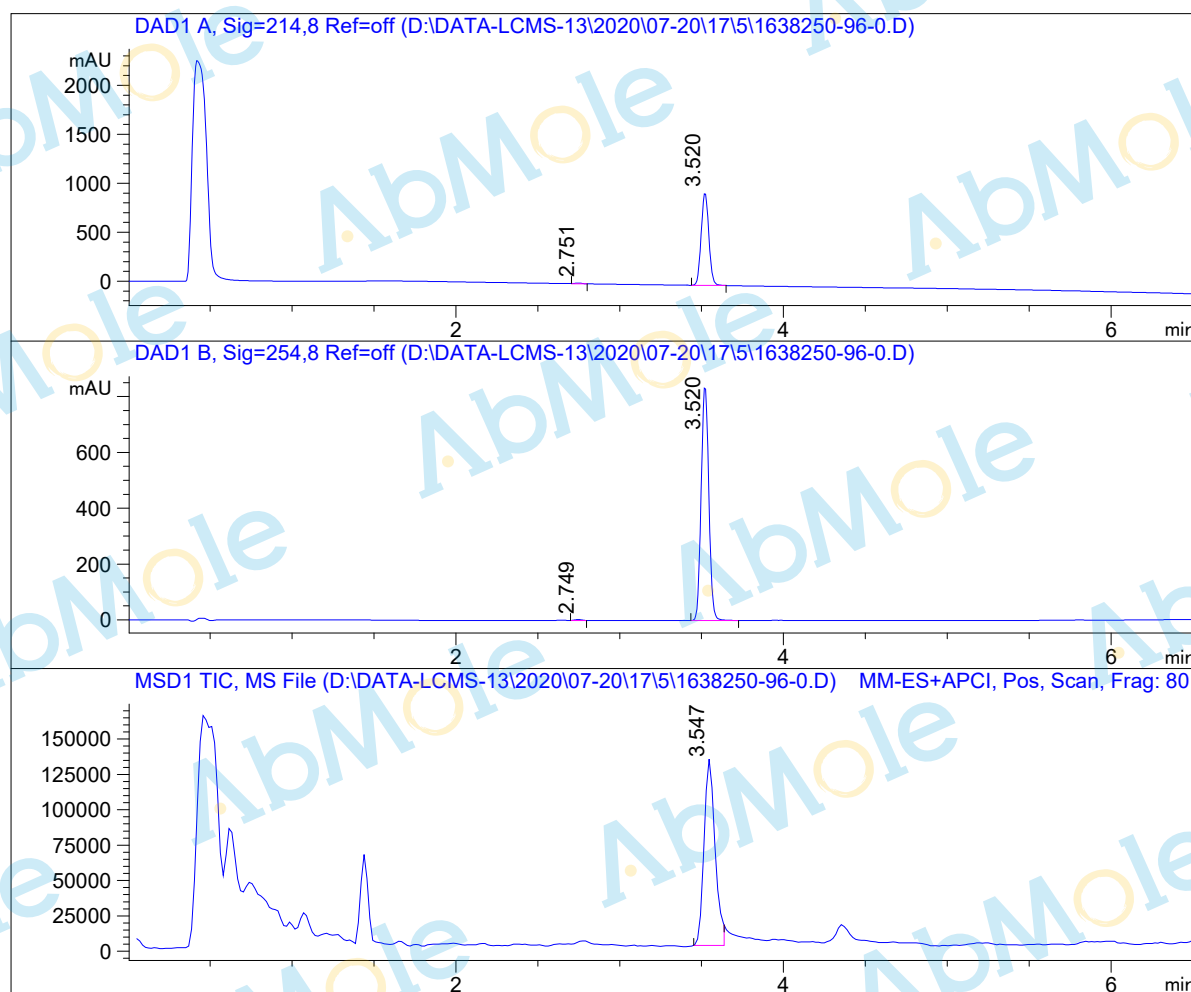


# LCMS Report

Sample Name : ETC-159-02  
 Data File : D:\DATA-LCMS-13\2020\07-20\17\5\1638250-96-0.D  
 Injection Date : Sun, 19. Jul. 2020 Inj. Vol. : 2ul  
 Acq Operator : LCMS-13 Location : Vial 72  
 Acq. Method : D:\data-lcms-13\2020\07-20\17\5\P-05-60-TFA.M  
 Method Info. : column:Xbridge C18 5um 4.6\*50mm ;mobile phase:B(ACN)  
 A(0.05%TFA) ; gradient(B%)!as Acq.Method above



## Integration Results

Signal 1: DAD1 A, Sig=214,8 Ref=off

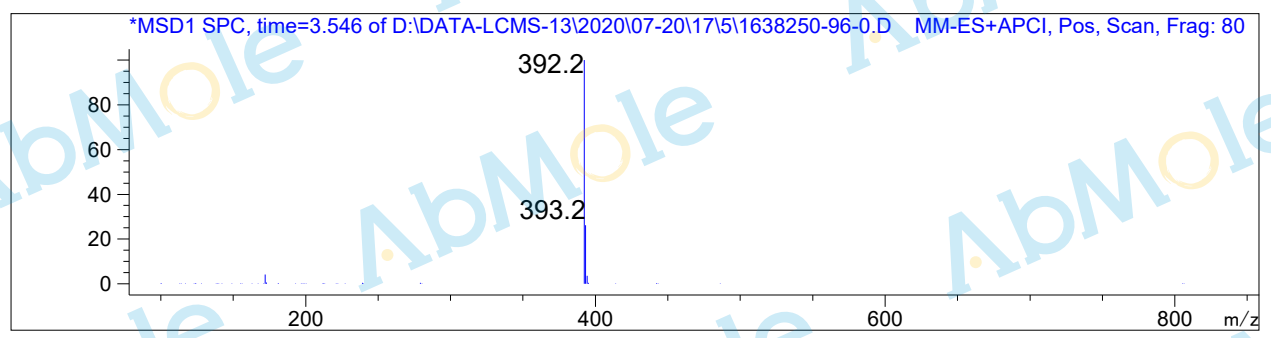
#	R.T.	Type	Height	Height%	Width	Area	Area %
1	2.751	FM	6.995	0.734	0.050	20.897	0.678
2	3.520	MM	946.119	99.266	0.054	3061.748	99.322

Signal 2: DAD1 B, Sig=254,8 Ref=off

#	R.T.	Type	Height	Height%	Width	Area	Area %
1	2.749	MM	3.549	0.419	0.048	10.264	0.374
2	3.520	MM	844.078	99.581	0.054	2730.531	99.626

Signal 3: MSD1 TIC, MS File

#	R.T.	Type	Height	Height%	Width	Area	Area %
1	3.547	MF	133562.734	100.000	0.078	621848.813	100.000



\*\*\* End of Report \*\*\*