

# LCMS Report

Sample Name : Dolutegravir sodium-02  
Data File : D:\DATA-LCMS-13\2020\02-20\28\6\Dolutegravir sodium-02.D  
Injection Date : Fri, 28. Feb. 2020 Inj. Vol. : 5ul  
Acq Operator : LCMS-13 Location : Vial 45  
Acq. Method : D:\data-lcms-13\2020\02-20\28\6\P-05-95.M  
Method Info. : column:Xbridge C18 5um 4.6\*30mm ;mobile phase:B (ACN)  
A(0.02%NH4Ac); gradient(B%)!as Acq.Method above



## Integration Results

Signal 1: DAD1 A, Sig=214,8 Ref=off

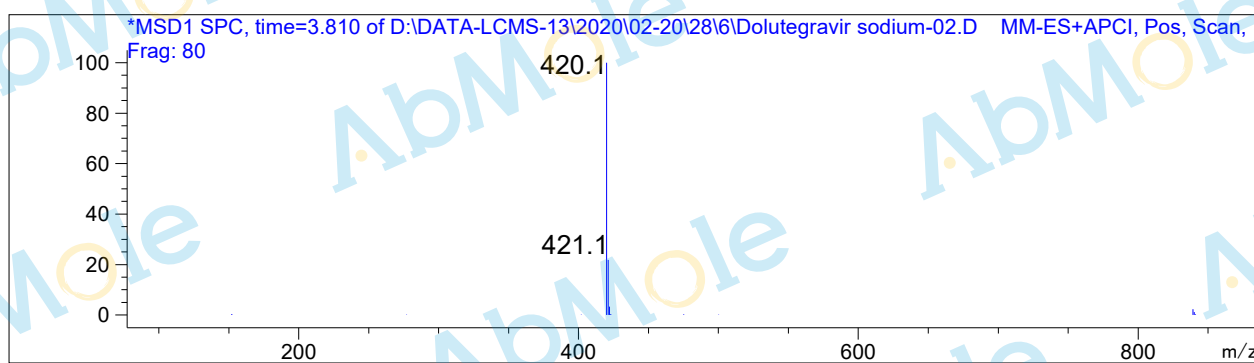
#	R.T.	Type	Height	Height%	Width	Area	Area %
1	3.330	MF	3.557	0.162	0.066	14.127	0.196
2	3.477	FM	7.435	0.339	0.052	23.104	0.320
3	3.664	MF	3.173	0.145	0.056	10.616	0.147
4	3.773	FM	2163.165	98.549	0.055	7095.235	98.317
5	4.285	MF	17.690	0.806	0.069	73.636	1.020

Signal 2: DAD1 B, Sig=254,8 Ref=off

#	R.T.	Type	Height	Height%	Width	Area	Area %
1	3.327	MF	5.815	0.202	0.065	22.752	0.231
2	3.477	FM	12.193	0.423	0.052	37.998	0.386
3	3.665	MF	4.600	0.160	0.049	13.481	0.137
4	3.774	FM	2840.676	98.595	0.057	9697.979	98.411
5	4.284	BB	17.868	0.620	0.066	82.395	0.836

Signal 3: MSD1 TIC, MS File

#	R.T.	Type	Height	Height%	Width	Area	Area %
1	3.810	MM	818777.438	100.000	0.079	3.865e+006	100.000



\*\*\* End of Report \*\*\*