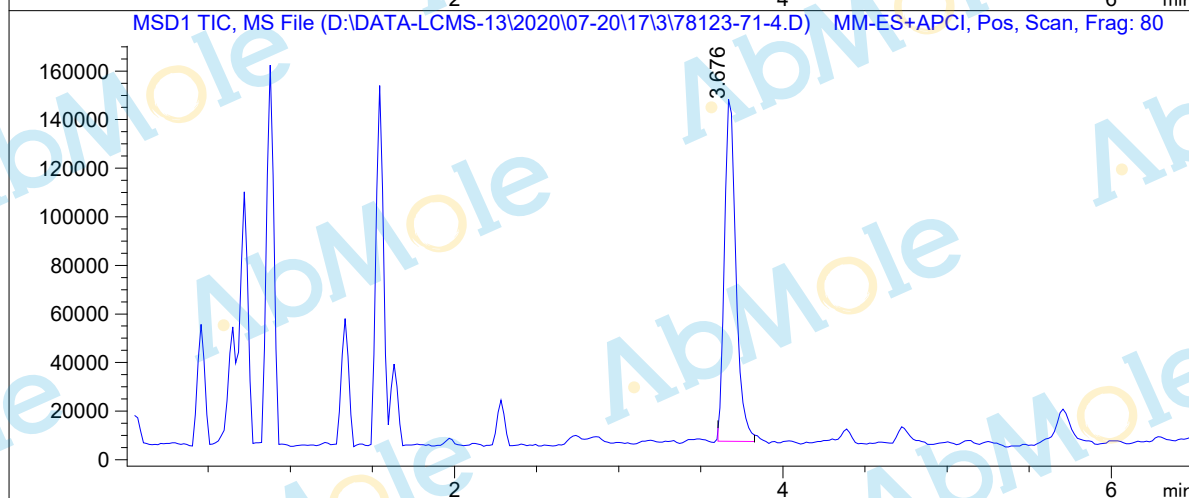
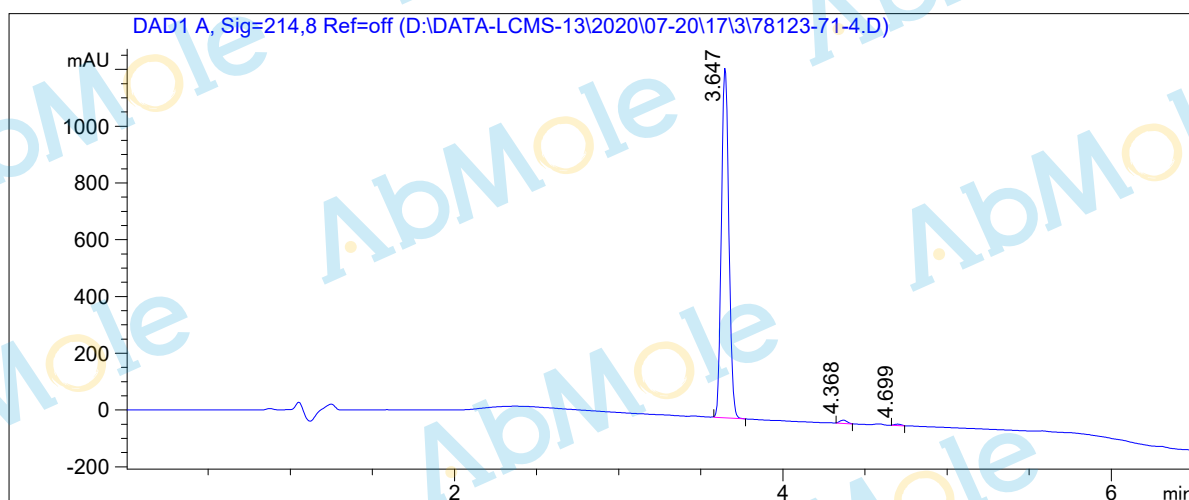


# LCMS Report

Sample Name : DAMGO-01  
Data File : D:\DATA-LCMS-13\2020\07-20\17\3\78123-71-4.D  
Injection Date : Fri, 17. Jul. 2020 Inj. Vol. : 3ul  
Acq Operator : LCMS-13 Location : Vial 43  
Acq. Method : D:\data-lcms-13\2020\07-20\17\3\P-05-60-TFA-C2.M  
Method Info. : column:Ecclipse XDB-C18 5um 4.6\*150mm ;mobile phase:B (ACN) A(0.02%NH4AC); gradient(B%)!as Acq.Method above



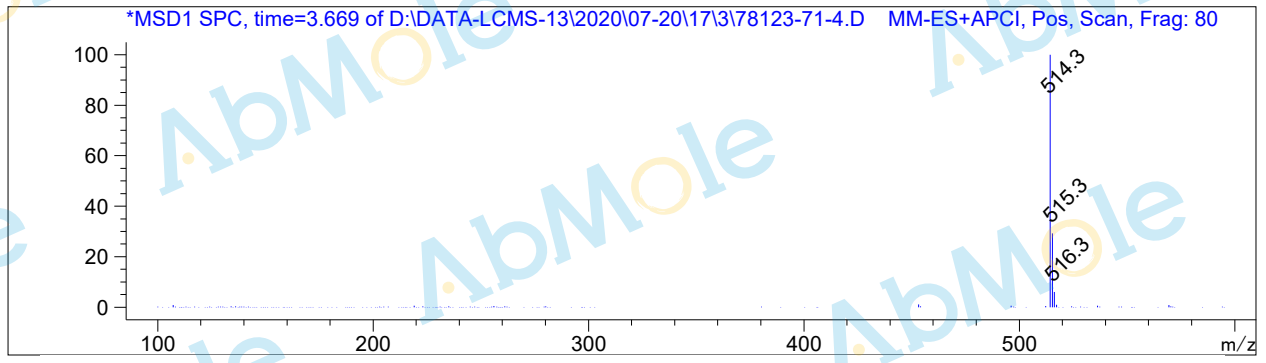
## Integration Results

Signal 1: DAD1 A, Sig=214,8 Ref=off

#	R.T.	Type	Height	Height%	Width	Area	Area %
1	3.647	BB	1239.460	98.629	0.051	3937.946	98.692
2	4.368	FM	12.008	0.956	0.051	36.991	0.927
3	4.699	MF	5.215	0.415	0.049	15.184	0.381

Signal 2: MSD1 TIC, MS File

#	R.T.	Type	Height	Height%	Width	Area	Area %
1	3.676	BB	143714.453	100.000	0.077	690129.938	100.000



\*\*\* End of Report \*\*\*