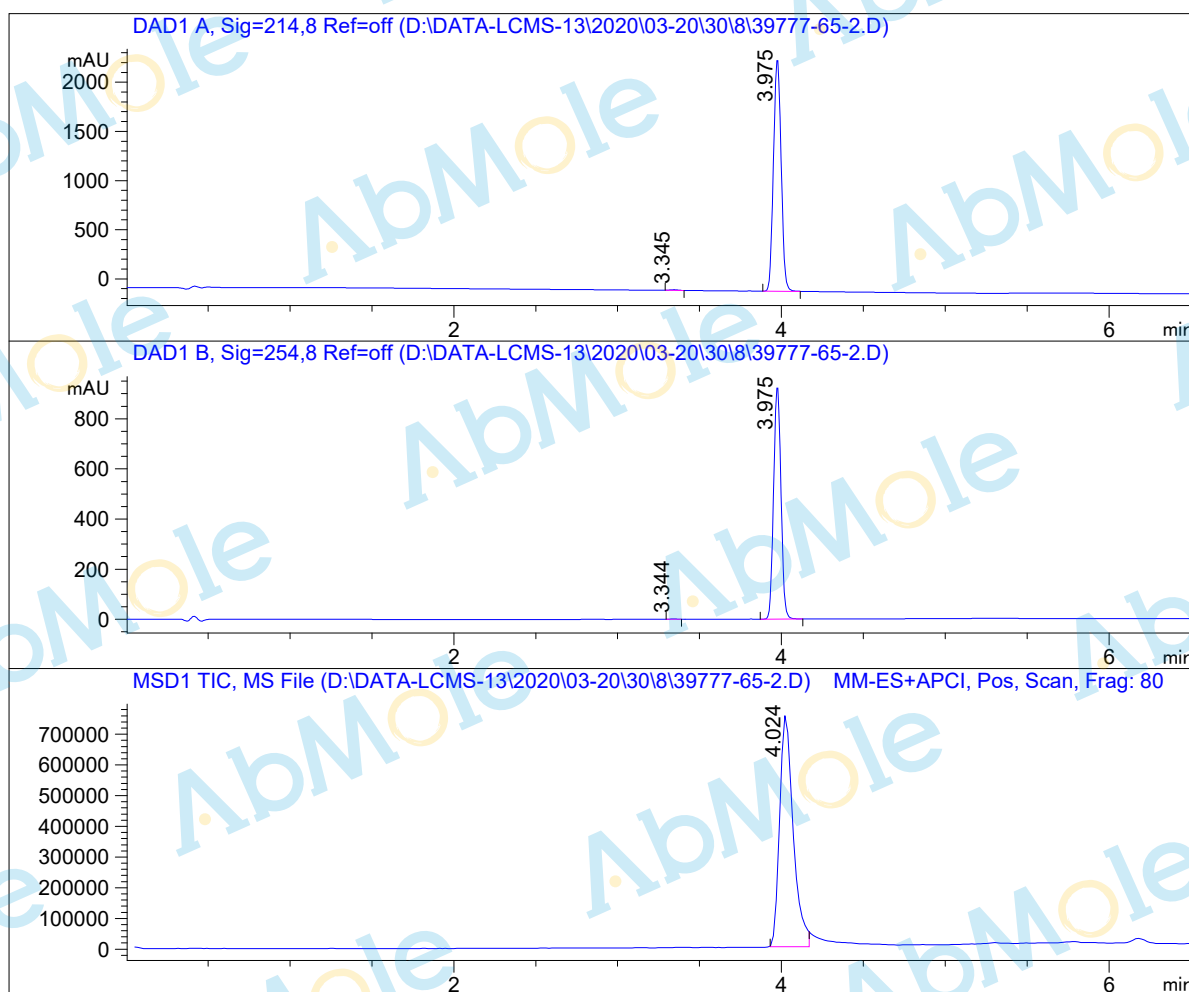


LCMS Report

Sample Name : Curcumin analog C1-01
Data File : D:\DATA-LCMS-13\2020\03-20\30\8\39777-65-2.D
Injection Date : Mon, 30. Mar. 2020 Inj. Vol. : 2ul
Acq Operator : LCMS-13 Location : Vial 41
Acq. Method : D:\data-lcms-13\2020\03-20\30\8\P-20-95.M
Method Info. : column:Xbridge C18 5um 4.6*30mm ;mobile phase:B (ACN)
A(0.02%NH4Ac); gradient(B%)!as Acq.Method above



Integration Results

Signal 1: DAD1 A, Sig=214,8 Ref=off

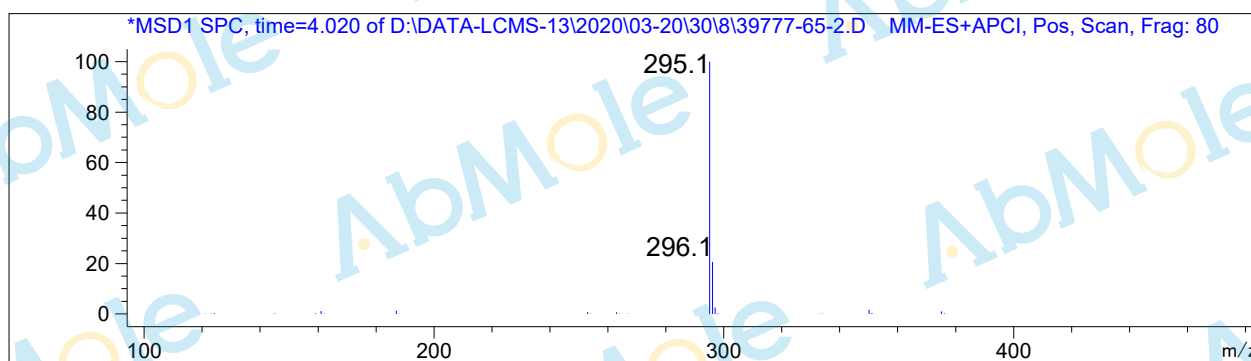
#	R.T.	Type	Height	Height%	Width	Area	Area %
1	3.345	FM	7.225	0.303	0.055	23.714	0.308
2	3.975	MM	2380.393	99.697	0.054	7681.008	99.692

Signal 2: DAD1 B, Sig=254,8 Ref=off

#	R.T.	Type	Height	Height%	Width	Area	Area %
1	3.344	FM	1.472	0.158	0.049	4.361	0.150
2	3.975	VB	932.462	99.842	0.048	2900.574	99.850

Signal 3: MSD1 TIC, MS File

#	R.T.	Type	Height	Height%	Width	Area	Area %
1	4.024	MM	764280.188	100.000	0.095	4.352e+006	100.000



*** End of Report ***