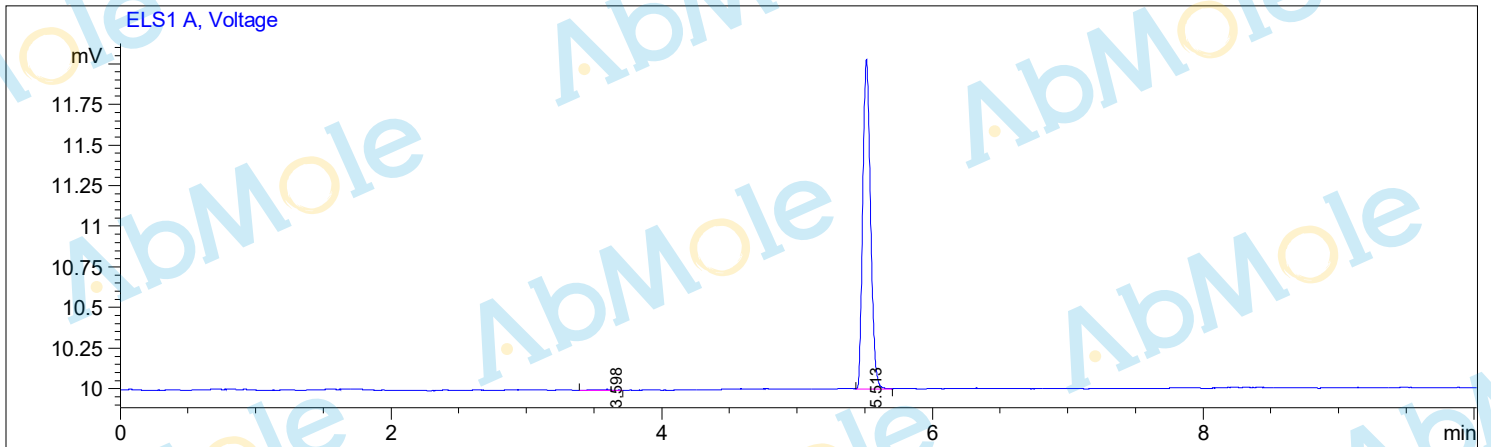


Injection Date : 19-Feb-19, 14:31:52
Sample Name : Corosolic acid-03
Acq. Operator : 1
Spec. Reported : Integration

Tgt Mass (EZ) :
Location : P1-D-04
Inj : 0
Inj Volume : 7 ul



Integration Results for ELS1 A, Voltage

RetTim	Width	Area	Height	Area%
3.60	0.16	0.07	0.01	0.82
5.51	0.06	8.10	2.03	99.18