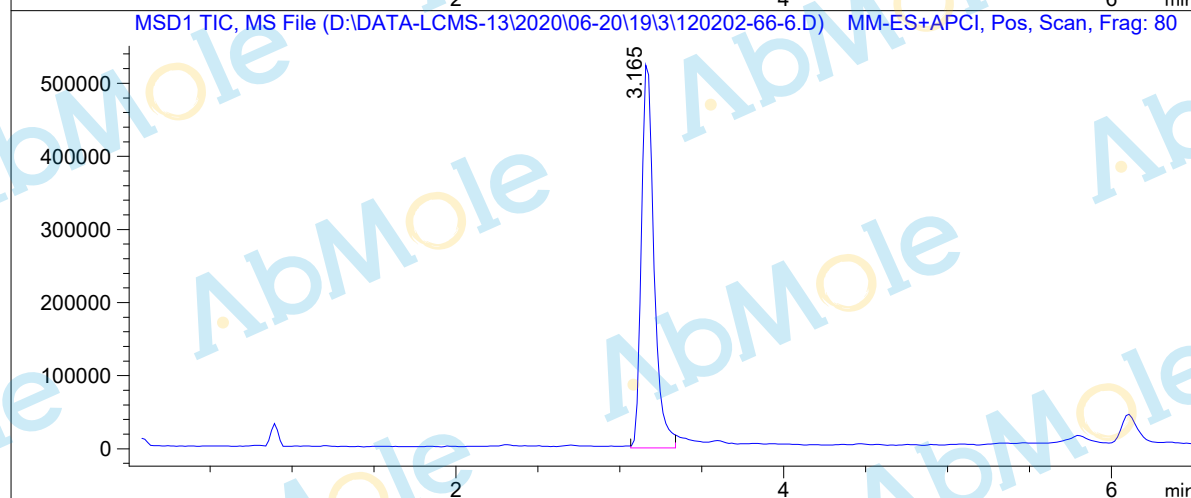
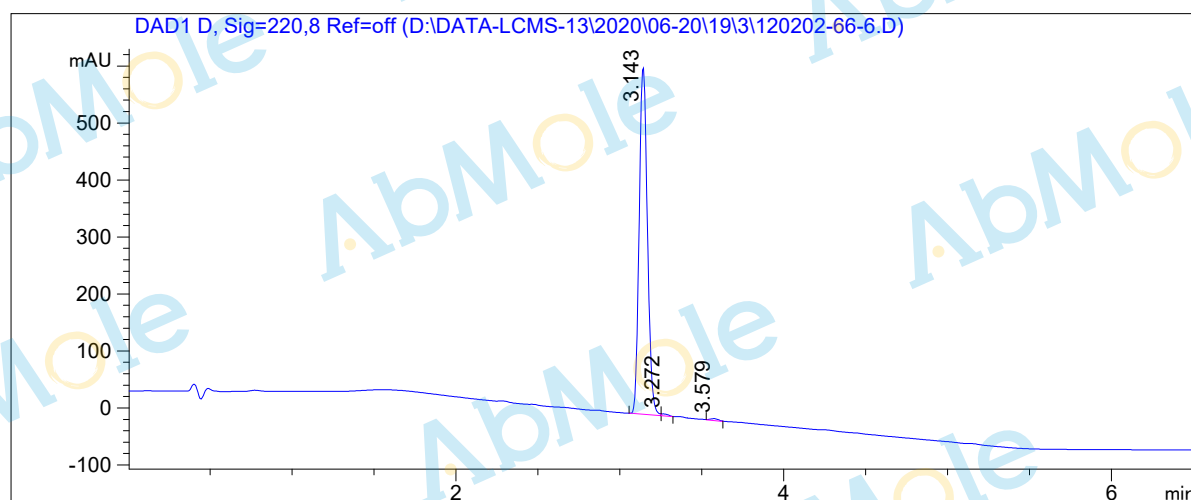


LCMS Report

Sample Name : Clopidogrel hydrogen sulfate-01
Data File : D:\DATA-LCMS-13\2020\06-20\19\3\120202-66-6.D
Injection Date : Fri, 19. Jun. 2020 Inj. Vol. : 2ul
Acq Operator : LCMS-13 Location : Vial 43
Acq. Method : D:\data-lcms-13\2020\06-20\19\3\P-05-95-TFA.M
Method Info. : column:Xbridge C18 5um 4.6*50mm ;mobile phase:B (ACN)
A(0.05%TFA) ; gradient(B%)!as Acq.Method above



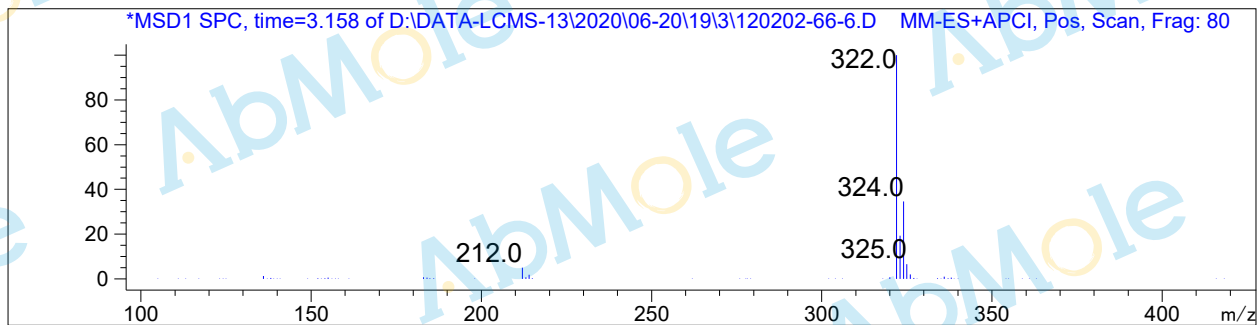
Integration Results

Signal 1: DAD1 D, Sig=220,8 Ref=off

#	R.T.	Type	Height	Height%	Width	Area	Area %
1	3.143	MF	613.819	98.940	0.058	2135.841	99.080
2	3.272	FM	3.392	0.547	0.043	8.851	0.411
3	3.579	MM	3.184	0.513	0.057	10.981	0.509

Signal 2: MSD1 TIC, MS File

#	R.T.	Type	Height	Height%	Width	Area	Area %
1	3.165	MM	542074.313	100.000	0.087	2.841e+006	100.000



*** End of Report ***