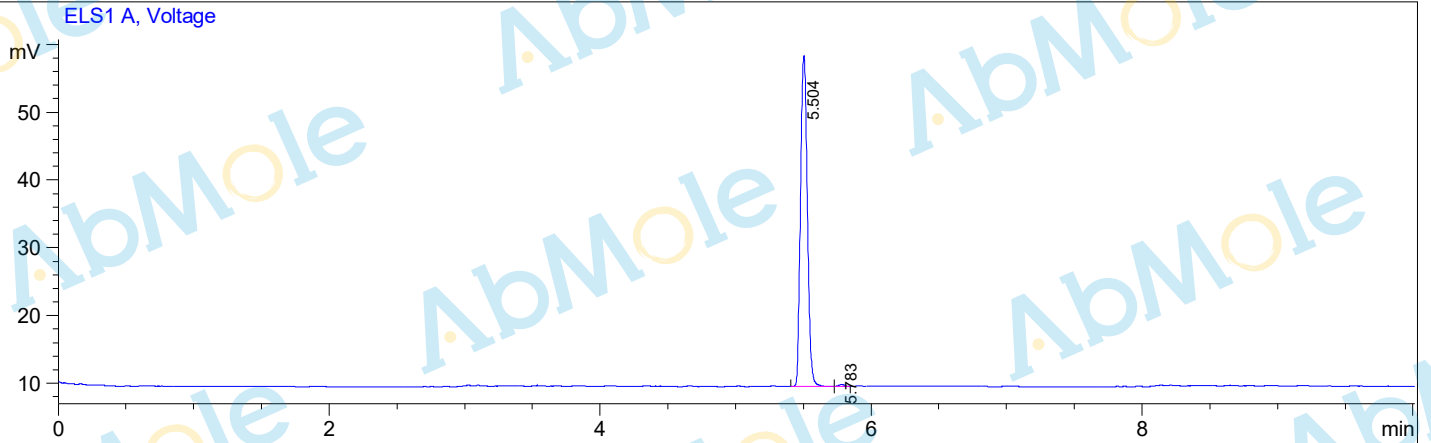


Injection Date : 27-Sep-19, 15:03:15
Sample Name : Cetrimonium Bromide-01
Acq. Operator : 1
Spec. Reported : Integration

Tgt Mass (EZX) :
Location : P2-B-05
Inj : 0
Inj Volume : 9 ul



Integration Results for ELS1 A, Voltage

RetTim	Width	Area	Height	Area%
5.50	0.06	173.14	48.83	99.39
5.78	0.06	1.07	0.31	0.61