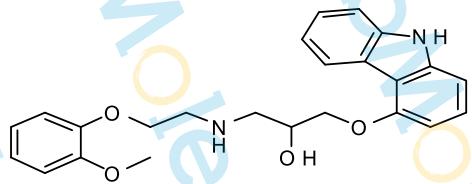


11.234

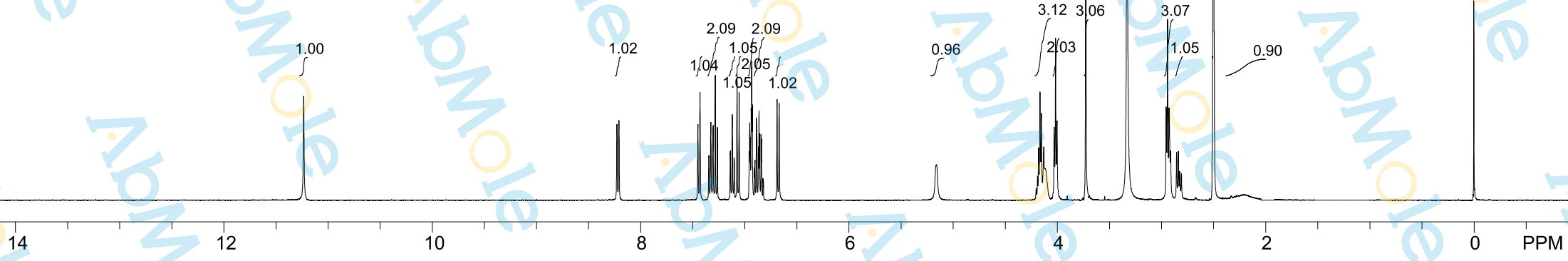
8.227
8.208
7.449
7.429
7.342
7.325
7.303
7.283
7.262
7.137
7.120
7.102
7.074
7.054
6.958
6.952
6.938
6.933
6.927
6.902
6.888
6.863
6.858
6.843
6.825
6.689
6.669
5.164
5.158
4.178
4.164
4.152
4.129
4.029
4.015
4.001
3.726
3.329
2.954
2.940
2.926
2.911
2.853
2.837
2.824
2.807
2.509
2.505
2.501
2.496
2.491
2.224
-0.001

Sample Name: Carvedilol-01
Chemical Formula: C₂₄H₂₆N₂O₄
Molecular Weight: 406.47



CAS: 72956-09-3

DM SO-d6, 400 MHz



14 12 10 8 6 4 2 0 PPM