

LC-MS Report

Sample Name : Capecitabine-01
Data File : D:\DATA-LCMS-13\2019\11-19\12\5\Capecitabine-01.D
Injection Date : Tue, 12. Nov. 2019 Inj. Vol. : 5ul
Acq Operator : LCMS-13 Location : Vial 75
Acq. Method : D:\data-lcms-13\2019\11-19\12\5\P-05-60.M
Method Info. : column:C18;column size:4.6*50mm ;mobile phase:B(ACN)
A(0.02%NH4Ac); gradient(B%)!as Acq.Method above



Integration Results

Signal 1: DAD1 A, Sig=214,8 Ref=off

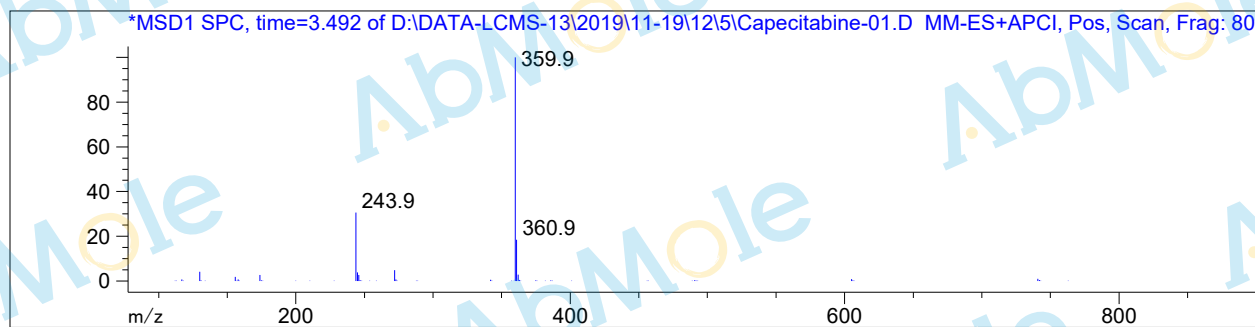
#	R.T.	Type	Height	Height%	Width	Area	Area %
1	3.473	MF	2792.135	100.000	0.070	11672.829	100.000

Signal 2: DAD1 B, Sig=254,8 Ref=off

#	R.T.	Type	Height	Height%	Width	Area	Area %
1	3.472	MF	2562.121	100.000	0.060	9182.063	100.000

Signal 3: MSD1 TIC, MS File

#	R.T.	Type	Height	Height%	Width	Area	Area %
1	3.496	MM	3.359e+006	100.000	0.094	1.894e+007	100.000



*** End of Report ***