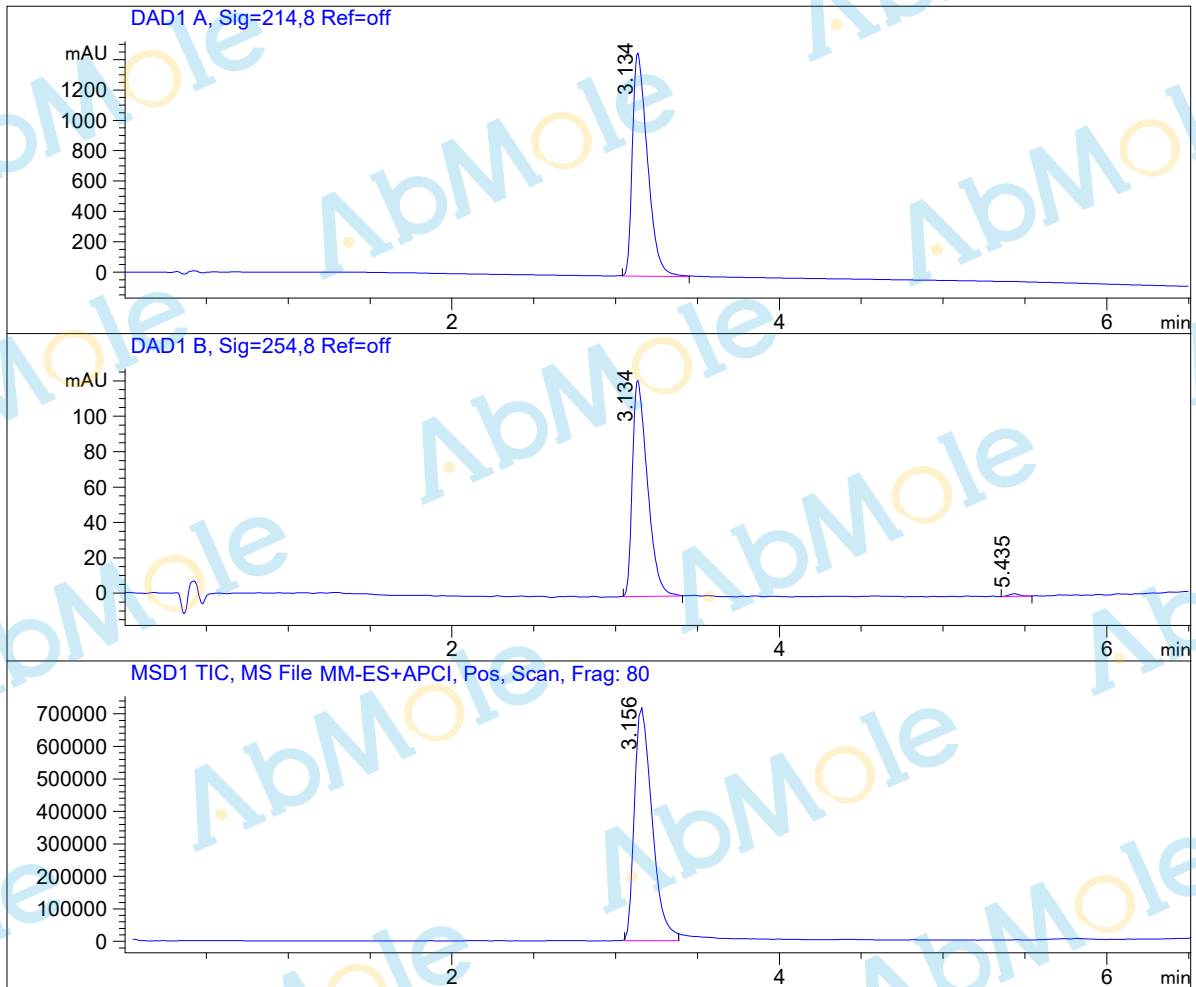


LC-MS Report

Sample Name : CKI-7 dihydrochloride-01
Data File : D:\DATA-LCMS-13\2019\11-19\29\4\CKI-7 dihydrochloride-01.D
Injection Date : Fri, 29. Nov. 2019 Inj. Vol. : 3ul
Acq Operator : LCMS-13 Location : Vial 67
Acq. Method : D:\data-lcms-13\2019\11-19\29\4\P-05-60.M
Method Info. : column:C18;column size:4.6*50mm ;mobile phase:B (ACN)
A(0.02%NH4Ac); gradient(B%)!as Acq.Method above



Integration Results

Signal 1: DAD1 A, Sig=214,8 Ref=off

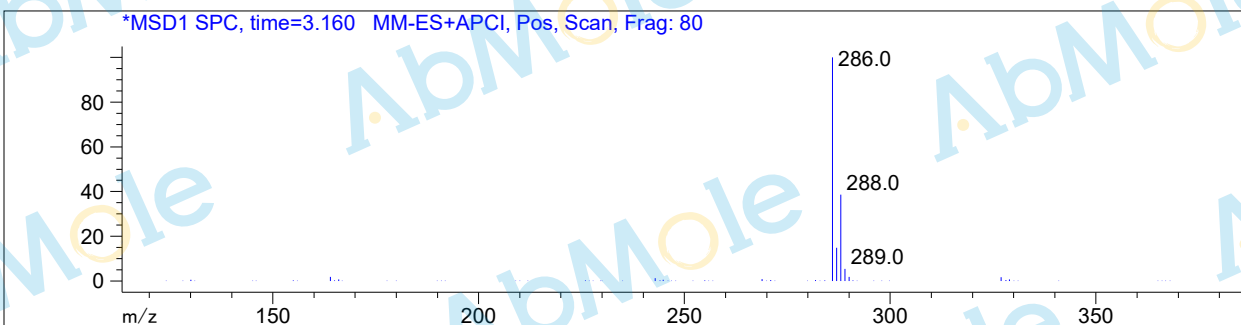
#	R.T.	Type	Height	Height%	Width	Area	Area %
1	3.134	BB	1469.325	100.000	0.100	9364.869	100.000

Signal 2: DAD1 B, Sig=254,8 Ref=off

#	R.T.	Type	Height	Height%	Width	Area	Area %
1	3.134	BB	122.117	98.757	0.100	776.673	99.144
2	5.435	BB	1.537	1.243	0.063	6.704	0.856

Signal 3: MSD1 TIC, MS File

#	R.T.	Type	Height	Height%	Width	Area	Area %
1	3.156	MM	721248.563	100.000	0.124	5.388e+006	100.000



*** End of Report ***