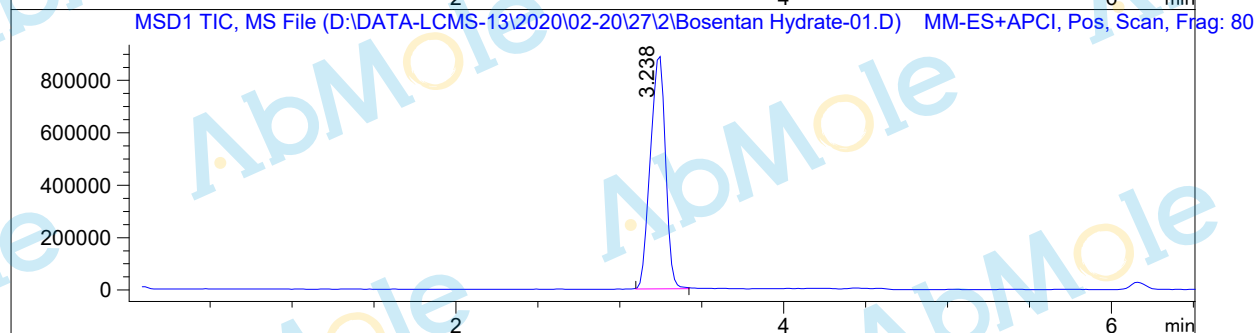
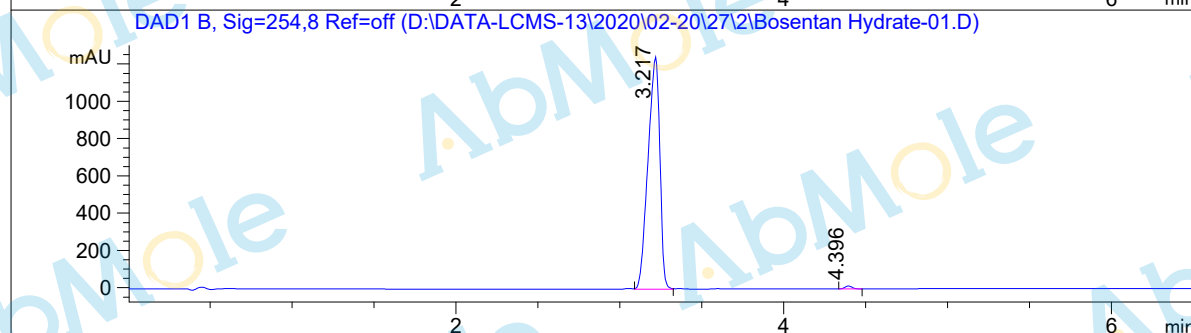
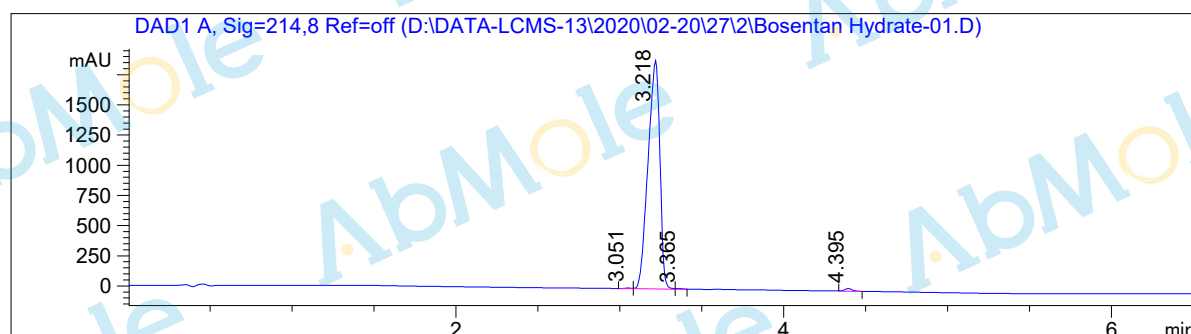


LCMS Report

Sample Name : Bosentan Hydrate-01
 Data File : D:\DATA-LCMS-13\2020\02-20\27\2\Bosentan Hydrate-01.D
 Injection Date : Thu, 27. Feb. 2020 Inj. Vol. : 3ul
 Acq Operator : LCMS-13 Location : Vial 31
 Acq. Method : D:\data-lcms-13\2020\02-20\27\2\P-05-95.M
 Method Info. : column:Eclipse XDB-C18 5um 4.6*150mm ;mobile phase:B(ACN) A(0.02%NH4AC); gradient(B%)!as Acq.Method above



Integration Results

Signal 1: DAD1 A, Sig=214,8 Ref=off

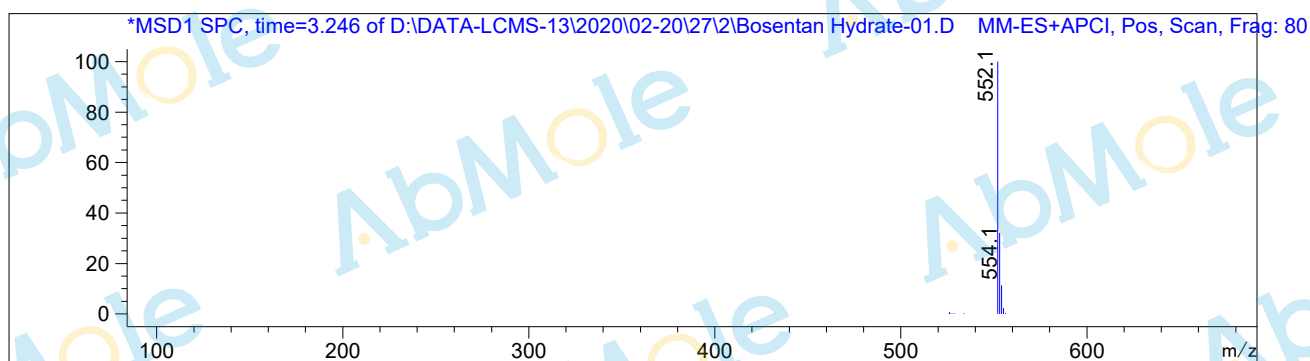
#	R.T.	Type	Height	Height%	Width	Area	Area %
1	3.051	BV	5.322	0.276	0.044	14.376	0.150
2	3.218	MF	1895.144	98.361	0.083	9460.306	98.988
3	3.365	FM	4.193	0.218	0.052	12.983	0.136
4	4.395	BB	22.064	1.145	0.049	69.353	0.726

Signal 2: DAD1 B, Sig=254,8 Ref=off

#	R.T.	Type	Height	Height%	Width	Area	Area %
1	3.217	MF	1247.251	98.792	0.083	6221.355	99.255
2	4.396	BB	15.247	1.208	0.048	46.687	0.745

Signal 3: MSD1 TIC, MS File

#	R.T.	Type	Height	Height%	Width	Area	Area %
1	3.238	BB	901152.563	100.000	0.100	5.714e+006	100.000



*** End of Report ***