

File D:\DATA\PRO2489-LCMS

Injection Date : 13 Nov 14 4:29 pm +0800

Tgt Mass (EZ) :

Sample Name : BMS-536924-LCMS

Location : P2-E-07

Acq. Operator : LCMS

Inj : 1

Spec. Reported : MS Integration

Inj Volume : 2 ul

Acq. Method : C:\Chem32\1\METHODS\1-POS-3MIN.M

Analysis Method : C:\Chem32\1\METHODS\1-POS-3MIN.M

Sample Info : Easy-Access Method: '1-POS-3min'

Method Info : Mobile Phase: A: water(0.01%TFA) B: ACN(0.01%TFA)

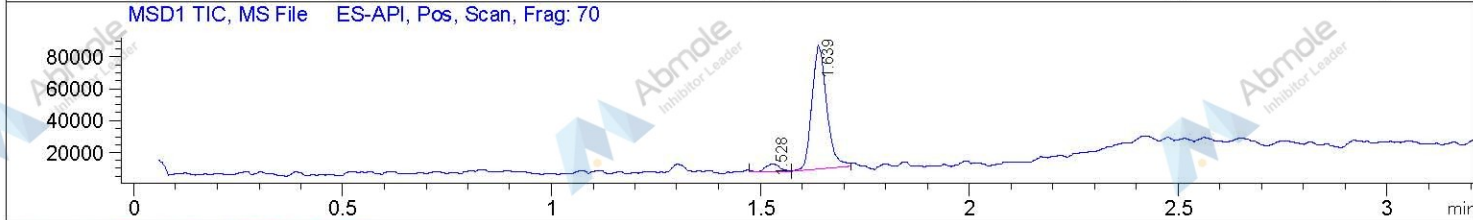
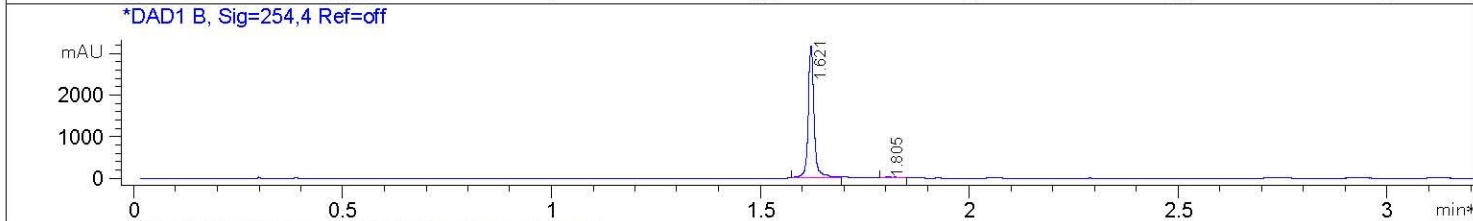
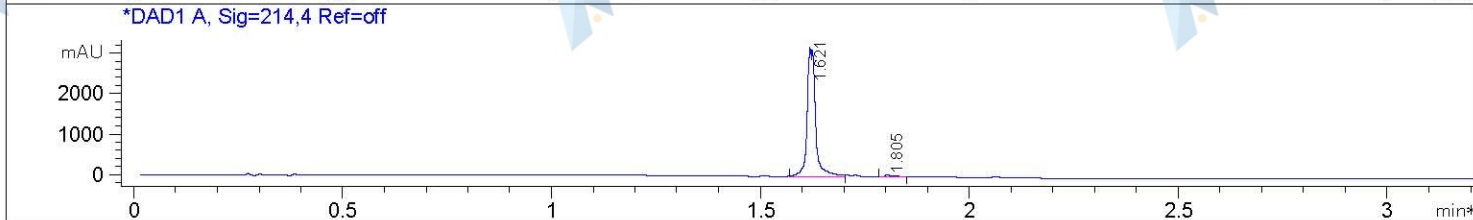
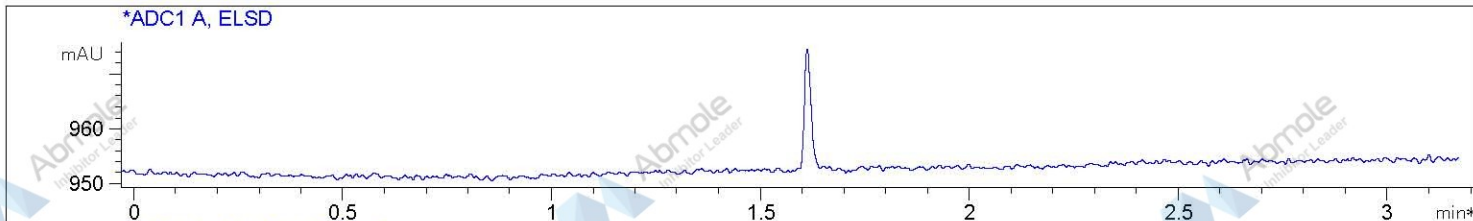
Gradient: 5%-95% B in 1.7 min

Flow Rate: 2.2 ml/min

Column: SunFire C18, 4.6*50mm, 3.5um

Column Temperature: 50 C

MASS Range:110-900



Integration Results for ADC1 A, ELSD

RetTim	Width	Area	Height	Area%
--------	-------	------	--------	-------

Integration Results for DAD1 A, Sig=214,4 Ref=off

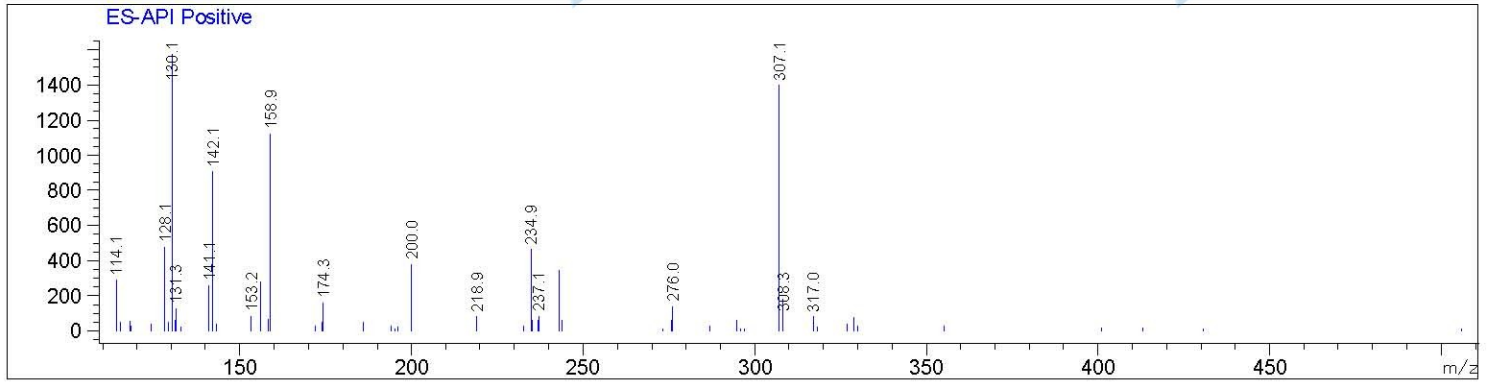
RetTim	Width	Area	Height	Area%
1.62	0.02	4392.06	3076.39	98.46
1.81	0.02	68.57	38.84	1.54

Integration Results for DAD1 B, Sig=254,4 Ref=off

RetTim	Width	Area	Height	Area%
1.62	0.01	3096.20	3161.71	98.83
1.80	0.02	36.54	24.30	1.17

Ret. Time: 1.53

<<<< POSITIVE SPECTRA >>>>



Ret. Time: 1.64

