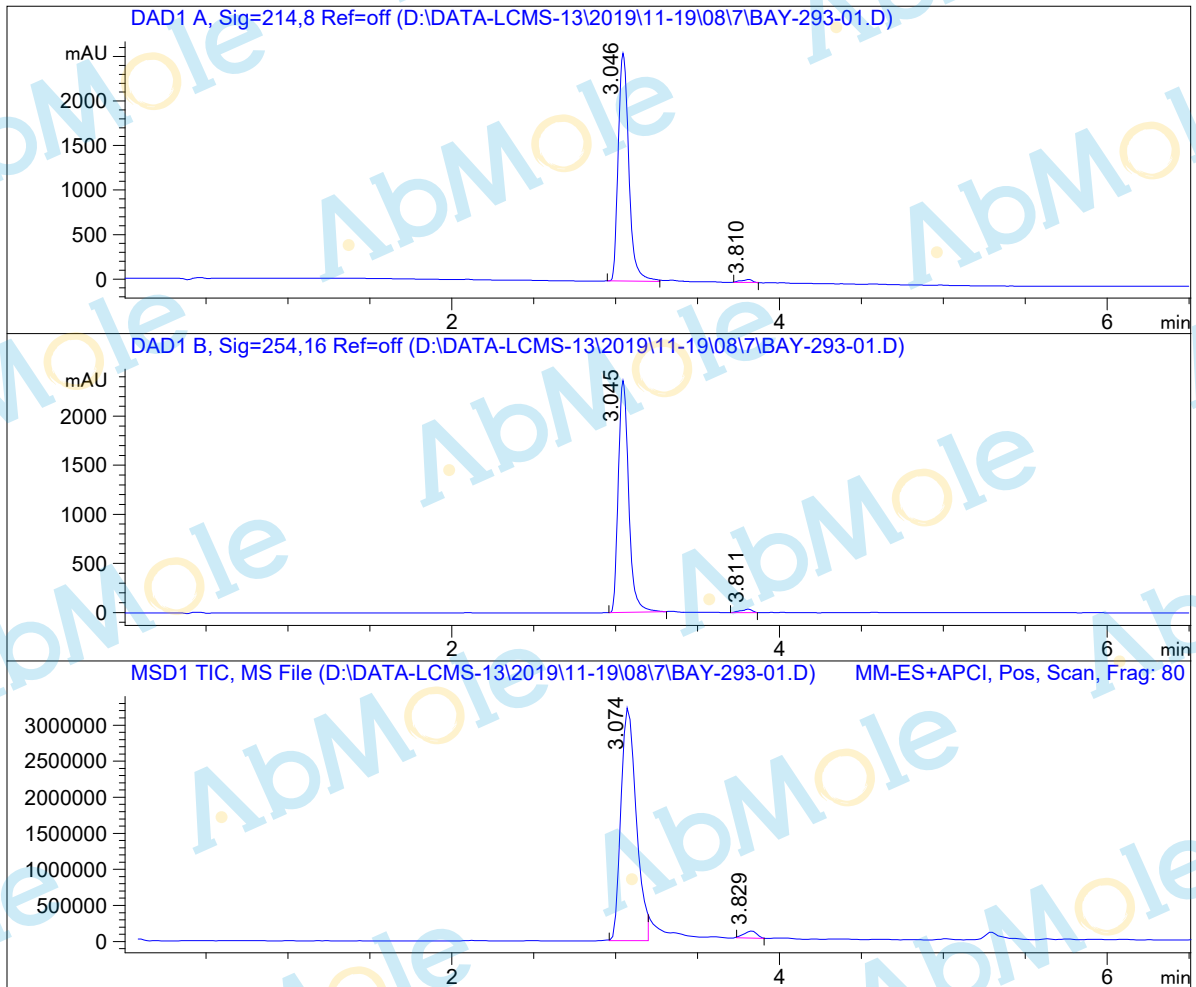


LC-MS Report

Sample Name : BAY-293-01
Data File : D:\DATA-LCMS-13\2019\11-19\08\7\BAY-293-01.D
Injection Date : Sat, 9. Nov. 2019 Inj. Vol. : 5ul
Acq Operator : LCMS-13 Location : Vial 17
Acq. Method : D:\data-lcms-13\2019\11-19\08\7\P-05-95-C2.M
Method Info. : column:C18;column size:4.6*50mm ;mobile phase:B (ACN)
A(0.02%NH4Ac); gradient(B%)!as Acq.Method above



Integration Results

Signal 1: DAD1 A, Sig=214,8 Ref=off

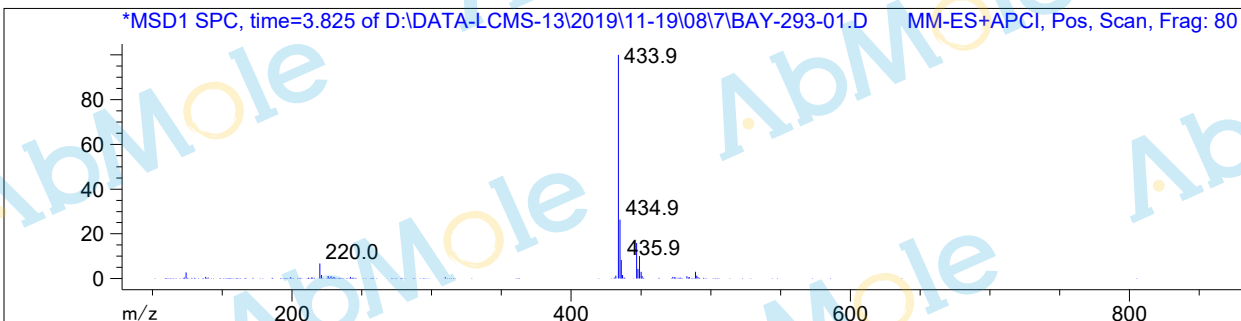
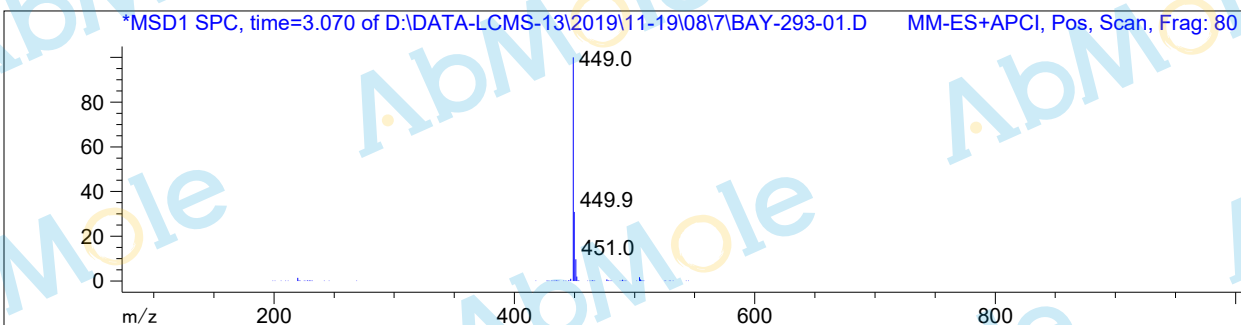
| # | R.T. | Type | Height | Height% | Width | Area | Area % |
|---|-------|------|----------|---------|-------|-----------|--------|
| 1 | 3.046 | MM | 2564.423 | 98.716 | 0.075 | 11481.322 | 98.708 |
| 2 | 3.810 | MM | 33.354 | 1.284 | 0.075 | 150.306 | 1.292 |

Signal 2: DAD1 B, Sig=254,16 Ref=off

| # | R.T. | Type | Height | Height% | Width | Area | Area % |
|---|----------|------|----------|---------|-------|-----------|--------|
| 1 | 3.045 MM | | 2365.960 | 98.503 | 0.073 | 10339.438 | 98.344 |
| 2 | 3.811 MM | | 35.957 | 1.497 | 0.081 | 174.090 | 1.656 |

Signal 3: MSD1 TIC, MS File

| # | R.T. | Type | Height | Height% | Width | Area | Area % |
|---|----------|------|------------|---------|-------|------------|--------|
| 1 | 3.074 MM | | 3.257e+006 | 97.003 | 0.108 | 2.111e+007 | 97.569 |
| 2 | 3.829 MM | | 100633.789 | 2.997 | 0.087 | 525885.188 | 2.431 |



*** End of Report ***