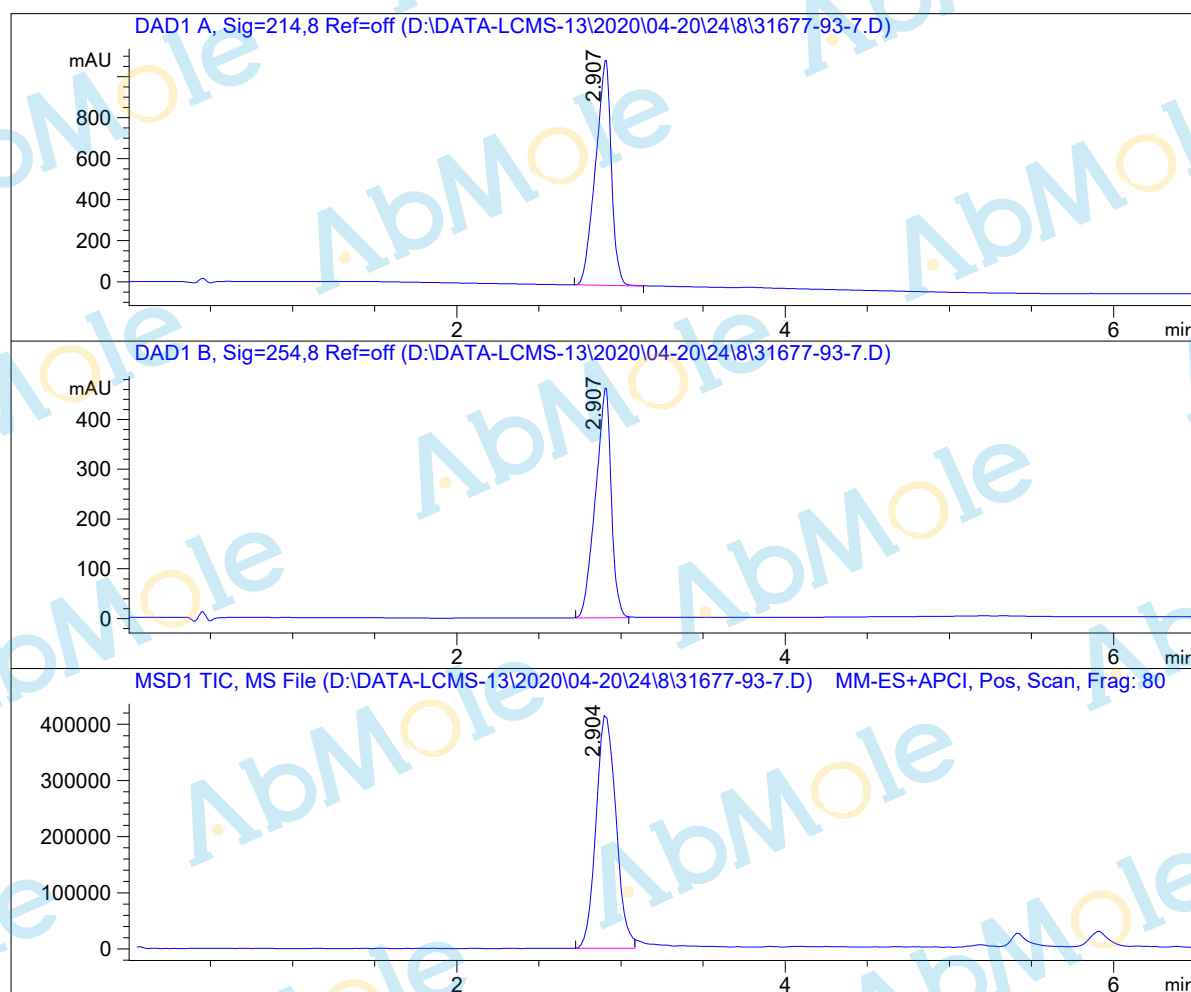


LCMS Report

Sample Name : Amfebutamone hydrochloride-01
Data File : D:\DATA-LCMS-13\2020\04-20\24\8\31677-93-7.D
Injection Date : Sat, 25. Apr. 2020 Inj. Vol. : 2ul
Acq Operator : LCMS-13 Location : Vial 64
Acq. Method : D:\data-lcms-13\2020\04-20\24\8\P-20-95.M
Method Info. : column:Xbridge C18 5um 4.6*30mm ;mobile phase:B (ACN)
A(0.02%NH4Ac); gradient(B%)!as Acq.Method above



Integration Results

Signal 1: DAD1 A, Sig=214,8 Ref=off

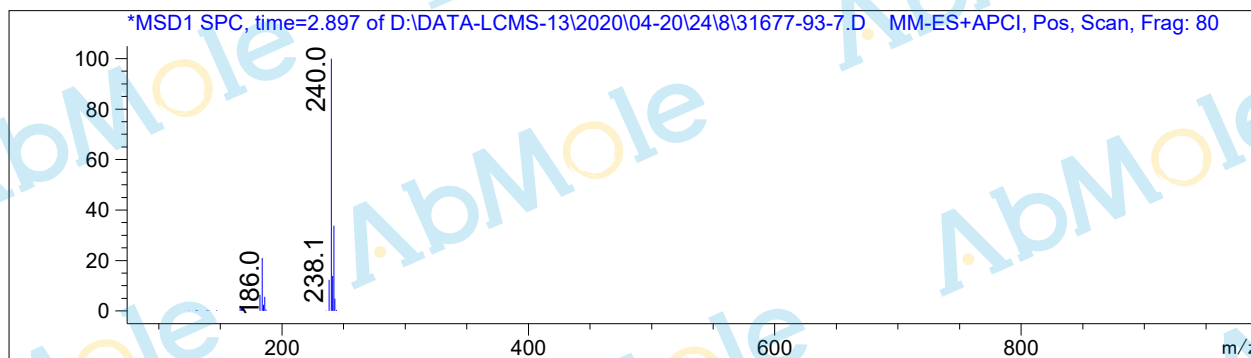
#	R.T.	Type	Height	Height%	Width	Area	Area %
1	2.907	BB	1099.700	100.000	0.098	7309.566	100.000

Signal 2: DAD1 B, Sig=254,8 Ref=off

#	R.T.	Type	Height	Height%	Width	Area	Area %
1	2.907	MF	462.999	100.000	0.110	3052.845	100.000

Signal 3: MSD1 TIC, MS File

#	R.T.	Type	Height	Height%	Width	Area	Area %
1	2.904	MF	419893.688	100.000	0.139	3.513e+006	100.000



*** End of Report ***