

File D:\DATA

Injection Date : 25-May-17,23:45

Sample Name : AZD3463-01

Acq. Operator : HPLC

Acq. Method : C:\Chem32\1\METHODS\2-HPLC-15MIN.M

Analysis Method : C:\Chem32\1\METHODS\2-HPLC-15MIN.M

Sample Info :

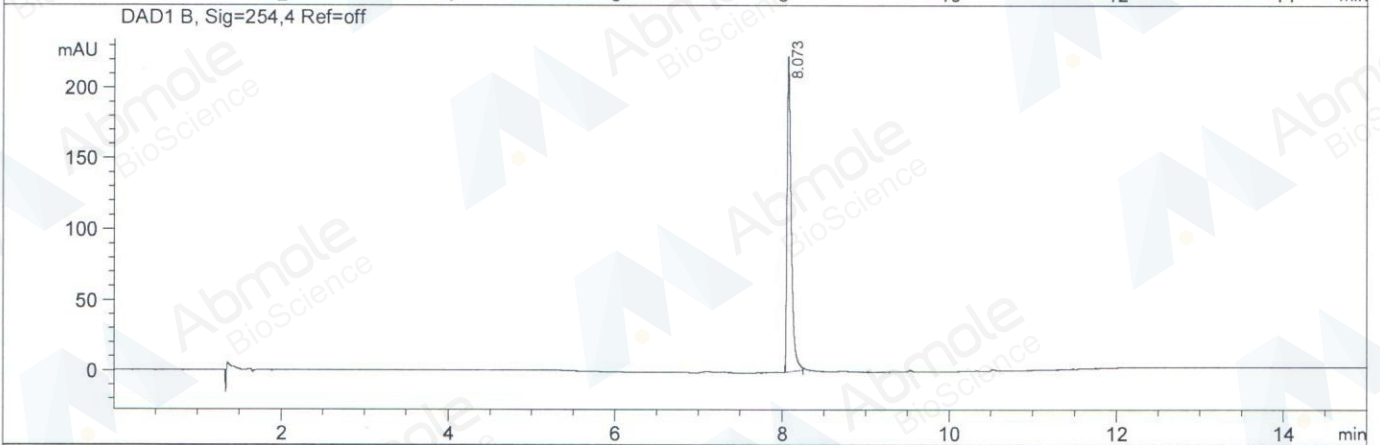
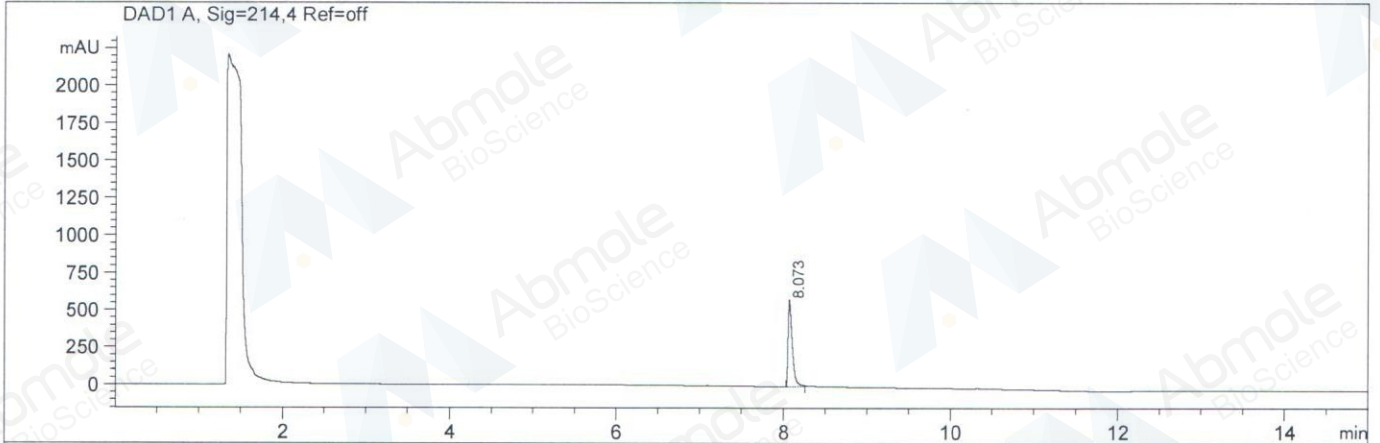
Method Info : Mobile Phase: A: water (0.01%TFA) B: ACN (0.01%TFA)

Gradient: 0min 5%B,3min 5%B,10min 95%B,15min 95%B

Flow Rate: 1.2 ml/min

Column: Eclipse XDB-C18,4.6*150mm,5um

Oven Temperature: 40 C



Integration Results for DAD1 A, Sig=214,4 Ref=off

RetTim	Width	Area	Height	Area%
8.07	0.05	1957.01	582.04	100.00

Integration Results for DAD1 B, Sig=254,4 Ref=off

RetTim	Width	Area	Height	Area%
8.07	0.05	750.28	223.40	100.00