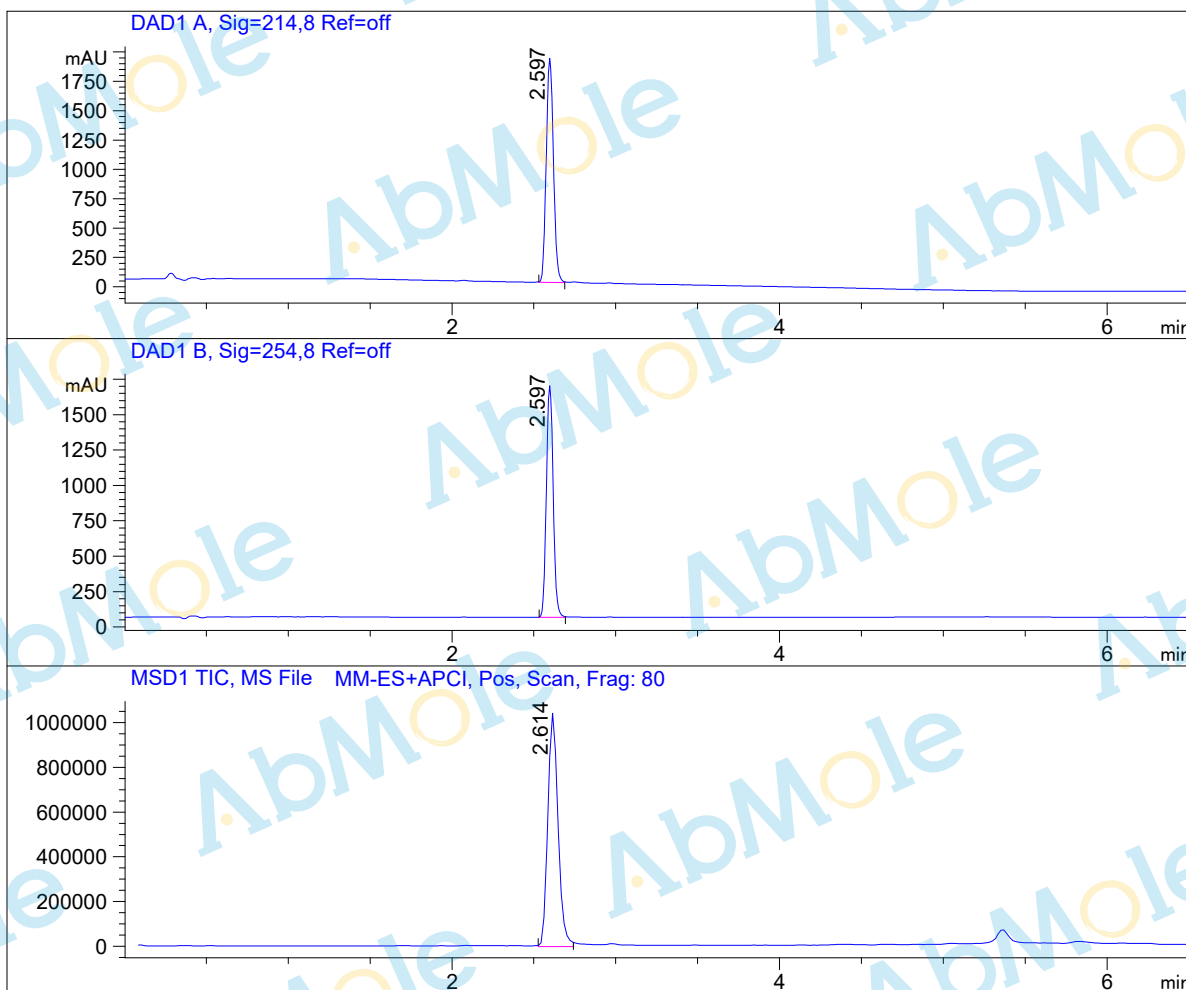


LC-MS Report

Sample Name : AZD-7648-01
Data File : D:\DATA-LCMS-13\2019\11-19\29\4\AZD-7648-01.D
Injection Date : Fri, 29. Nov. 2019 Inj. Vol. : 3ul
Acq Operator : LCMS-13 Location : Vial 70
Acq. Method : D:\data-lcms-13\2019\11-19\29\4\P-05-95.M
Method Info. : column:C18;column size:4.6*50mm ;mobile phase:B (ACN)
A(0.02%NH4Ac); gradient(B%)!as Acq.Method above



Integration Results

Signal 1: DAD1 A, Sig=214,8 Ref=off

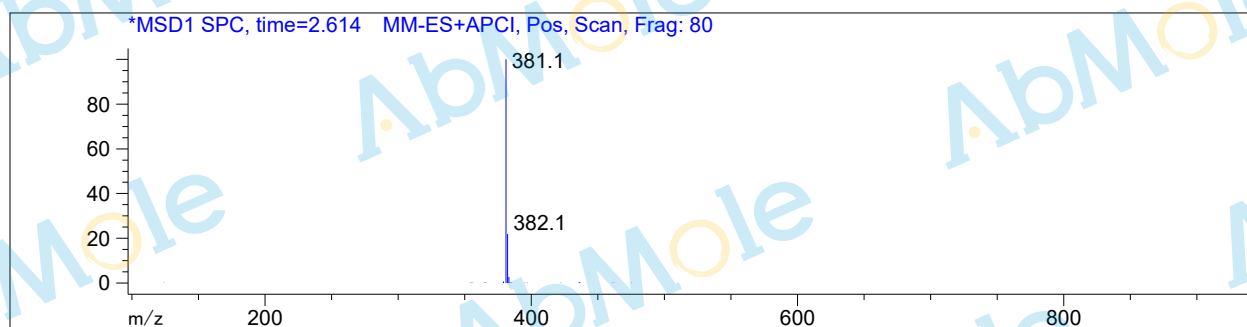
#	R.T.	Type	Height	Height%	Width	Area	Area %
1	2.597	MF	1919.219	100.000	0.051	5858.827	100.000

Signal 2: DAD1 B, Sig=254,8 Ref=off

#	R.T.	Type	Height	Height%	Width	Area	Area %
1	2.597	FM	1644.760	100.000	0.048	4751.117	100.000

Signal 3: MSD1 TIC, MS File

#	R.T.	Type	Height	Height%	Width	Area	Area %
1	2.614	MM	1.061e+006	100.000	0.071	4.533e+006	100.000



*** End of Report ***