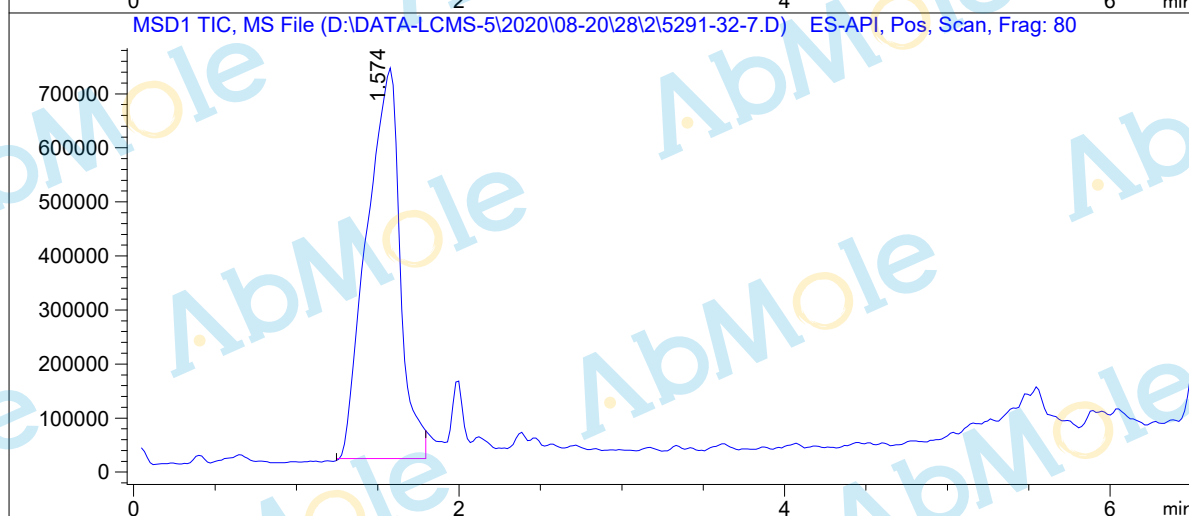
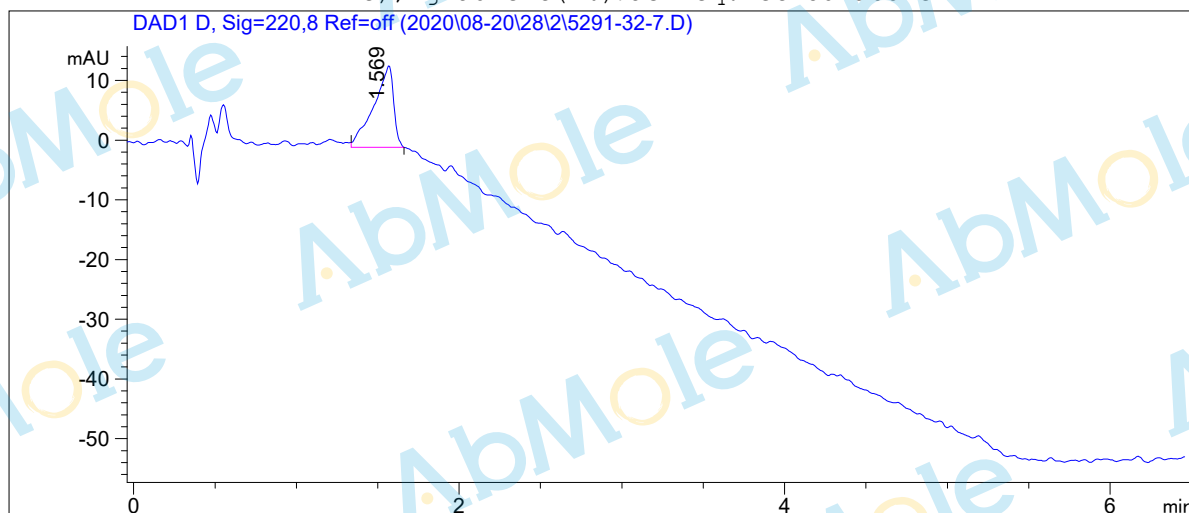


LCMS Report

Sample Name : APR-246-01
Data File : D:\DATA-LCMS-5\2020\08-20\28\2\5291-32-7.D
Injection Date : Fri, 28. Aug. 2020 Inj. Vol. : 5ul
Acq Operator : lcms-5 Location : Vial 62
Acq. Method : D:\data-lcms-5\2020\08-20\28\2\P-05-95.M
Method Info. : column:EC C18 4um 4.6*50mm ;mobile phase:B (ACN) A(0.02% NH4Ac); gradient (B%)!as Acq.Method above



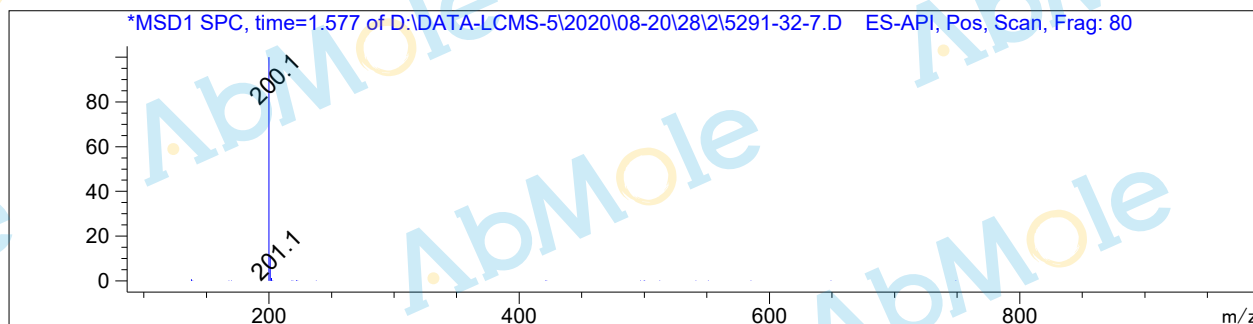
Integration Results

Signal 1: DAD1 D, Sig=220,8 Ref=off

#	R.T.	Type	Height	Height%	Width	Area	Area %
1	1.569	MM	13.665	100.000	0.140	115.183	100.000

Signal 2: MSD1 TIC, MS File

#	R.T.	Type	Height	Height%	Width	Area	Area %
1	1.574	MM	724842.688	100.000	0.236	1.026e+007	100.000



*** End of Report ***