

File D:\DATA\PRO2414-LCMS

Injection Date : 28 Oct 14 5:14 pm +0800

Tgt Mass (EZX) :

Sample Name : A66-LCMS

Location : P1-E-08

Acq. Operator : LCMS

Inj : 1

Spec. Reported : MS Integration

Inj Volume : 2 ul

Acq. Method : D:\METHODS\1-POS-3MIN.M

Analysis Method : D:\METHODS\1-POS-3MIN.M

Sample Info : Easy-Access Method: '1-POS-3min'

Method Info : Mobile Phase: A: water (10mM Ammonium hydrogen carbonate) B: ACN

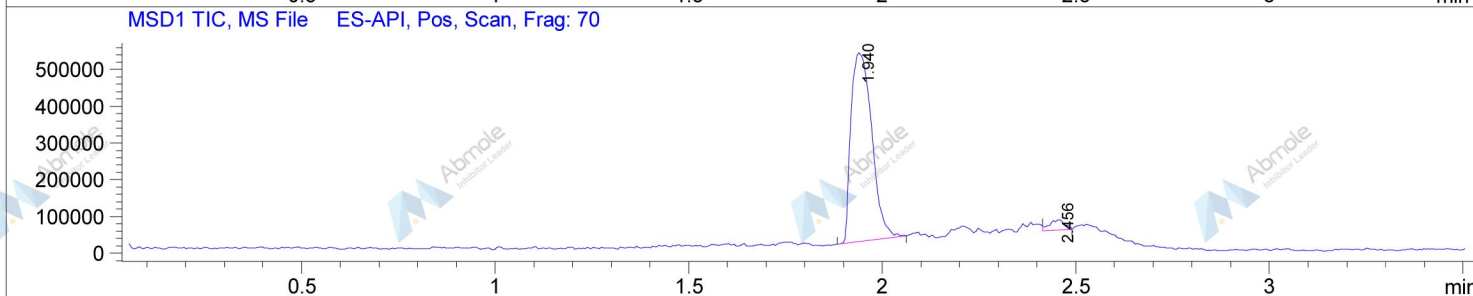
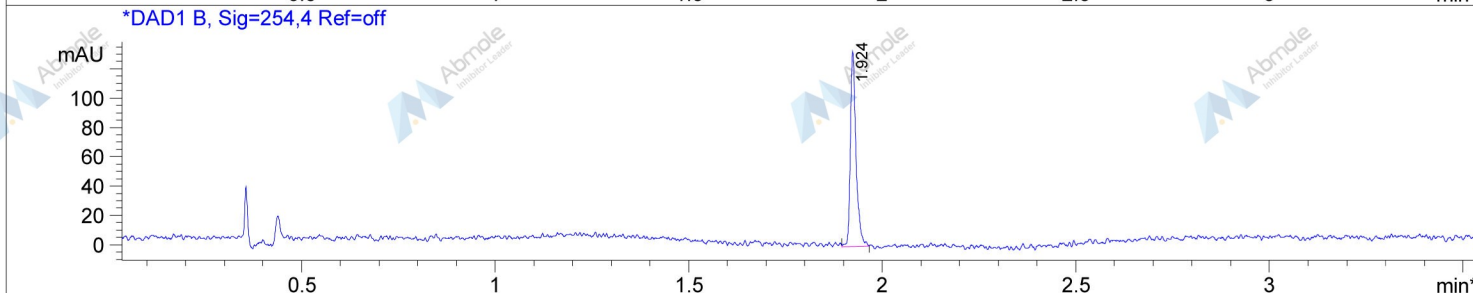
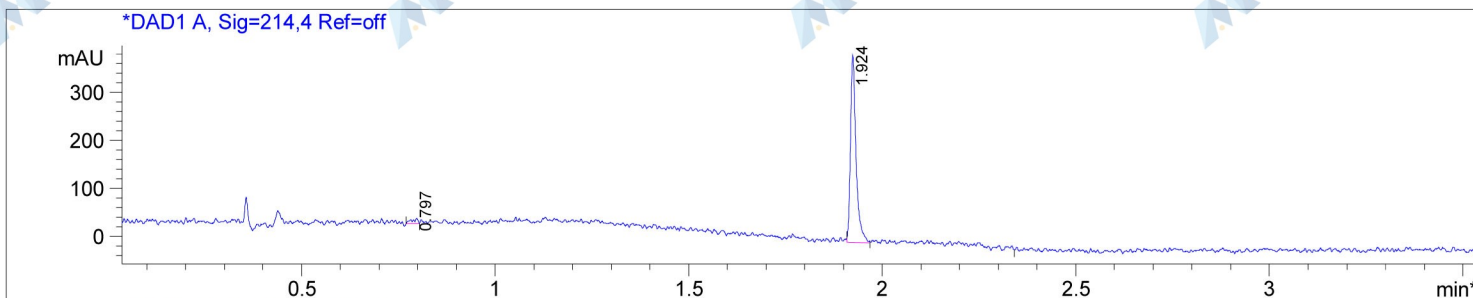
Gradient: 5%-95% B in 1.5min

Flow Rate: 2.0ml/min

Column: XBridge C18, 4.6*50mm, 3.5um

Oven Temperature: 40 C

MASS Range: 110-800



Integration Results for DAD1 A, Sig=214,4 Ref=off

RetTim	Width	Area	Height	Area%
0.80	0.02	2.99	1.23	0.16
1.92	0.02	394.07	389.86	99.84

Integration Results for DAD1 B, Sig=254,4 Ref=off

RetTim	Width	Area	Height	Area%
1.92	0.02	135.73	132.99	100.00

Ret. Time: 1.94 <<<< POSITIVE SPECTRA >>>>

Ret. Time: 2.46

